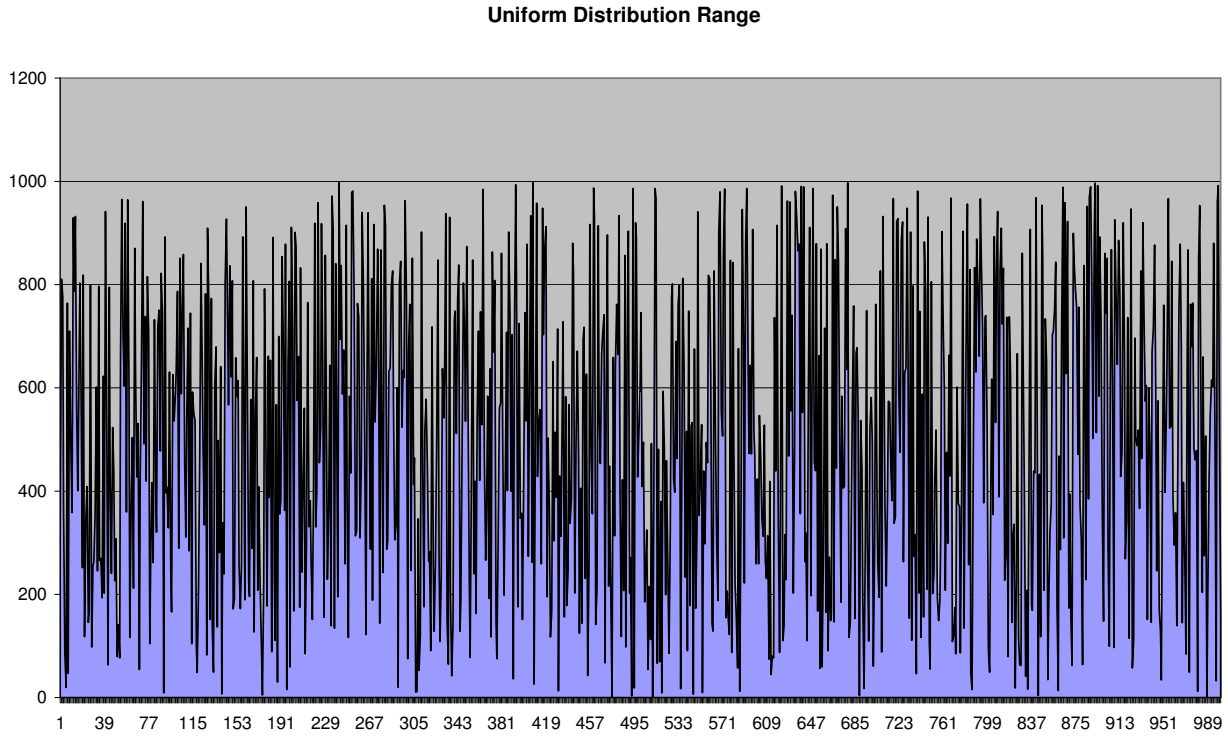
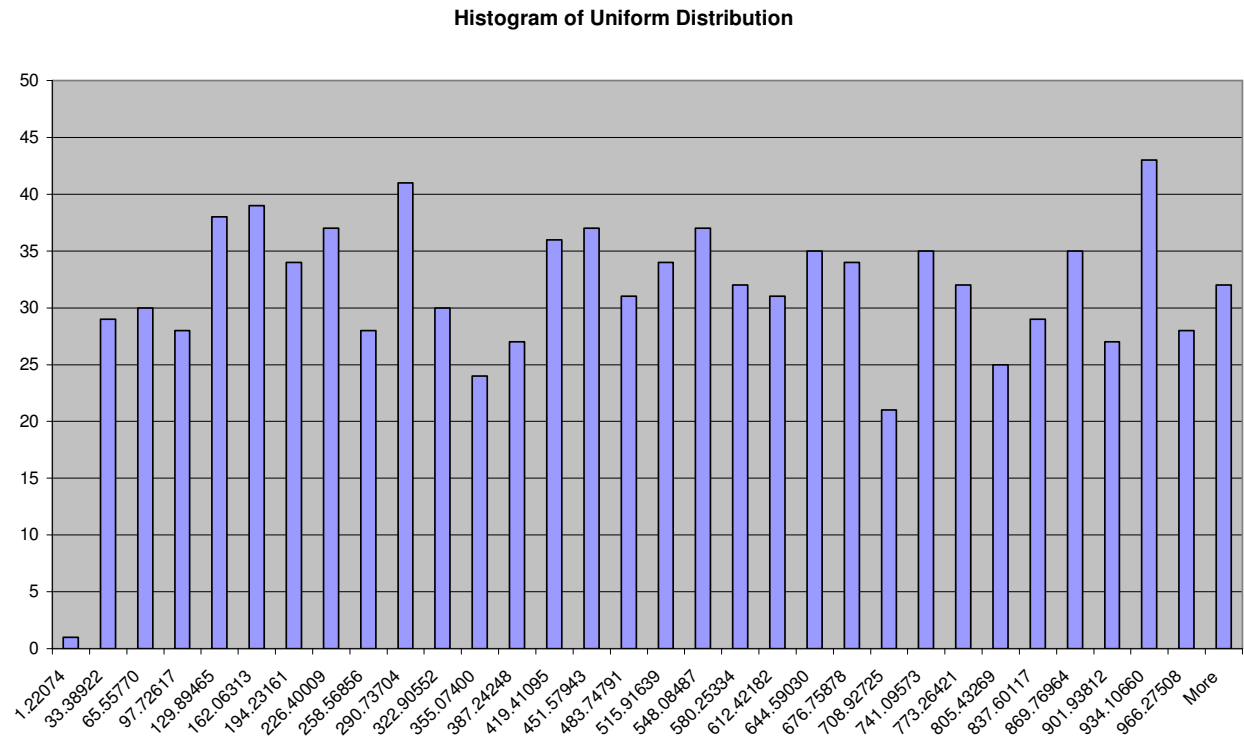


Uniform Distribution;

We generate random "1000" numbers between "0" and "1000" according to uniform distribution. The chart of the distribution is,



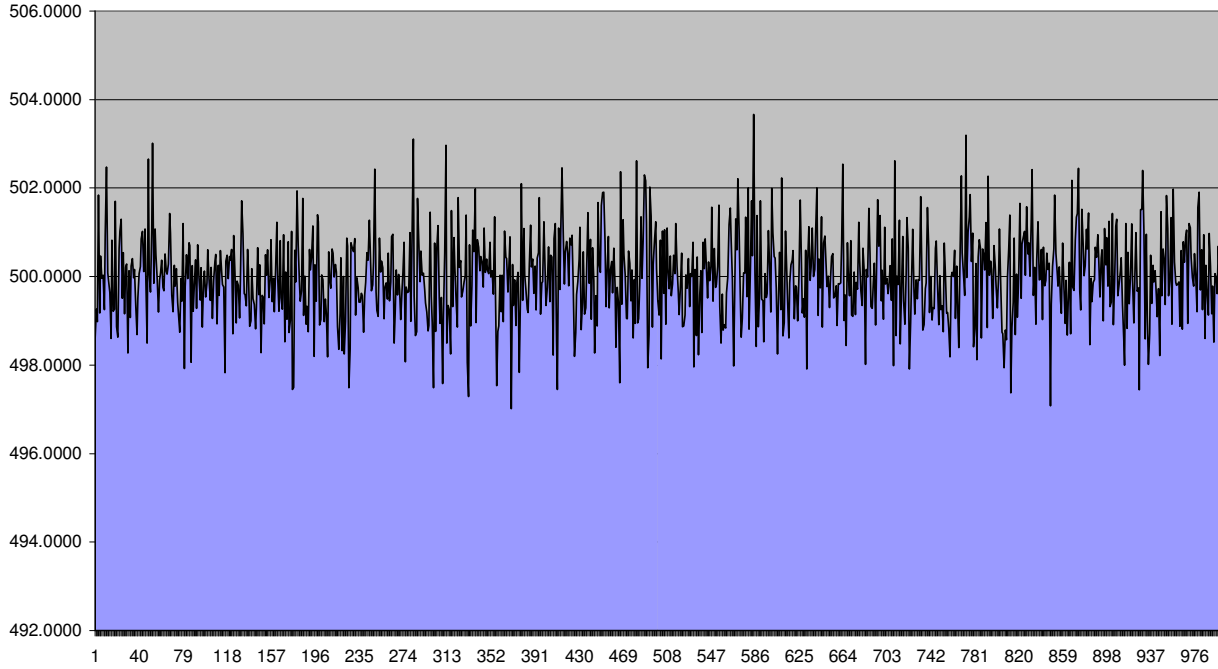
The histogram of the uniform distribution is,



Normal Distribution;

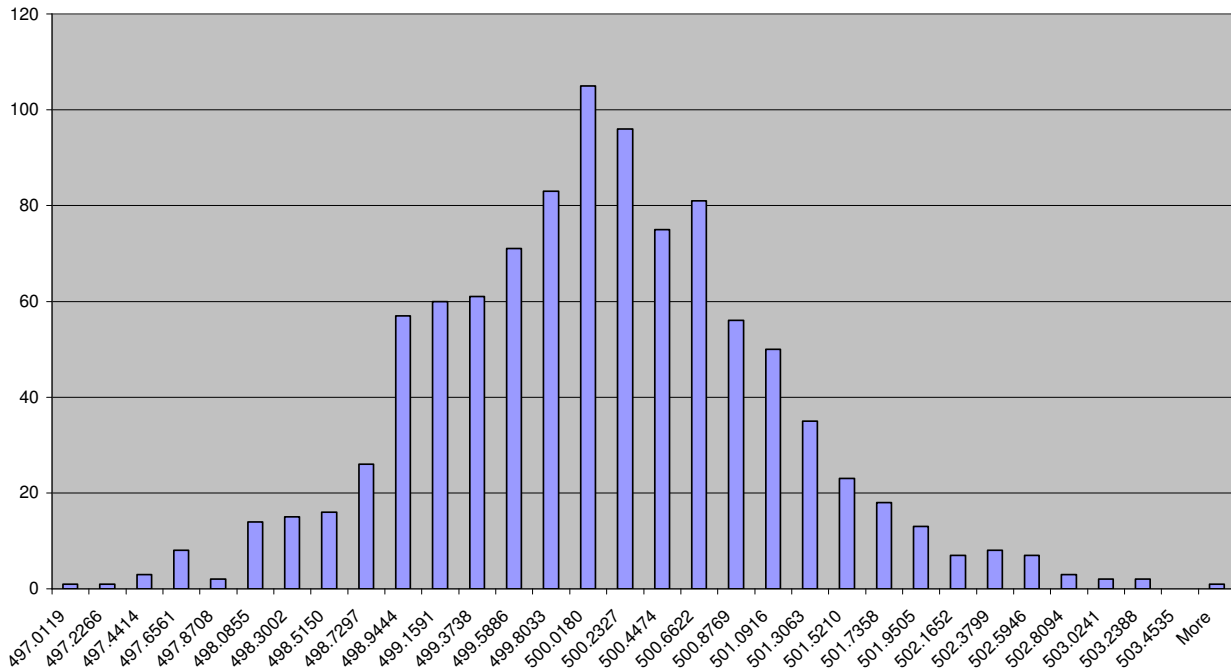
We generate random "1000" numbers which have "500" mean and standart deviation "1" according to Normal (Gaussian) distribution. The chart of the distribution is,

Normal (Gaussian) Distribution Range



The histogram of the distribution is,

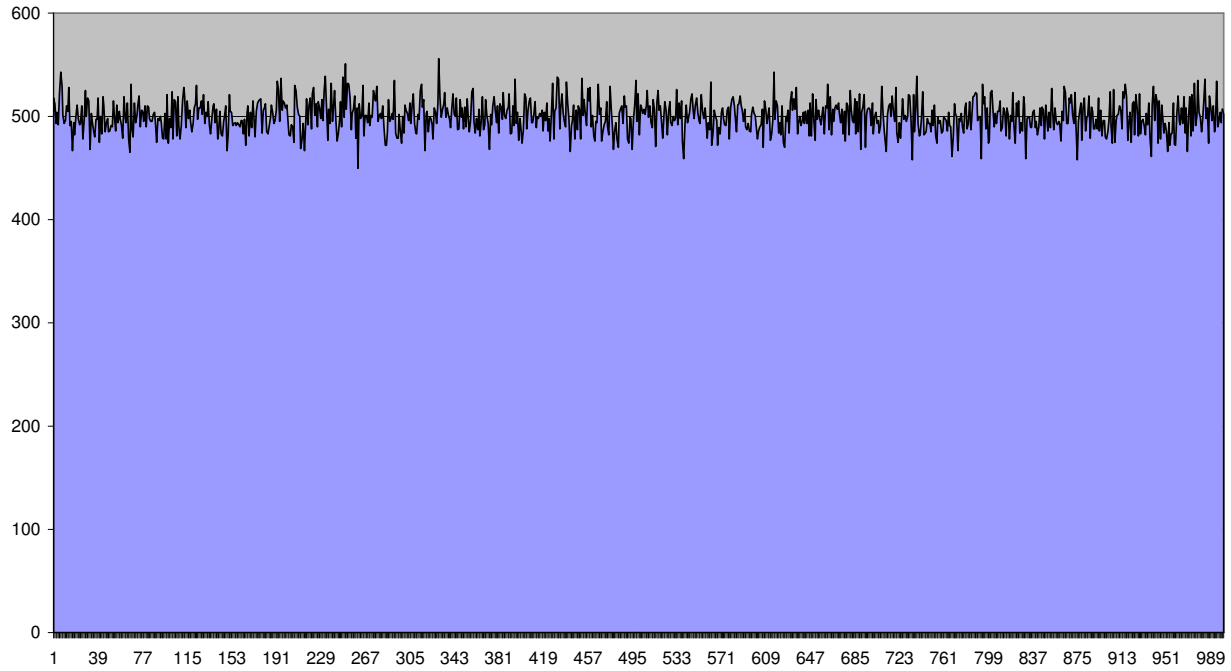
Histogram of Normal (Gaussian) Distribution



Binomial Distribution;

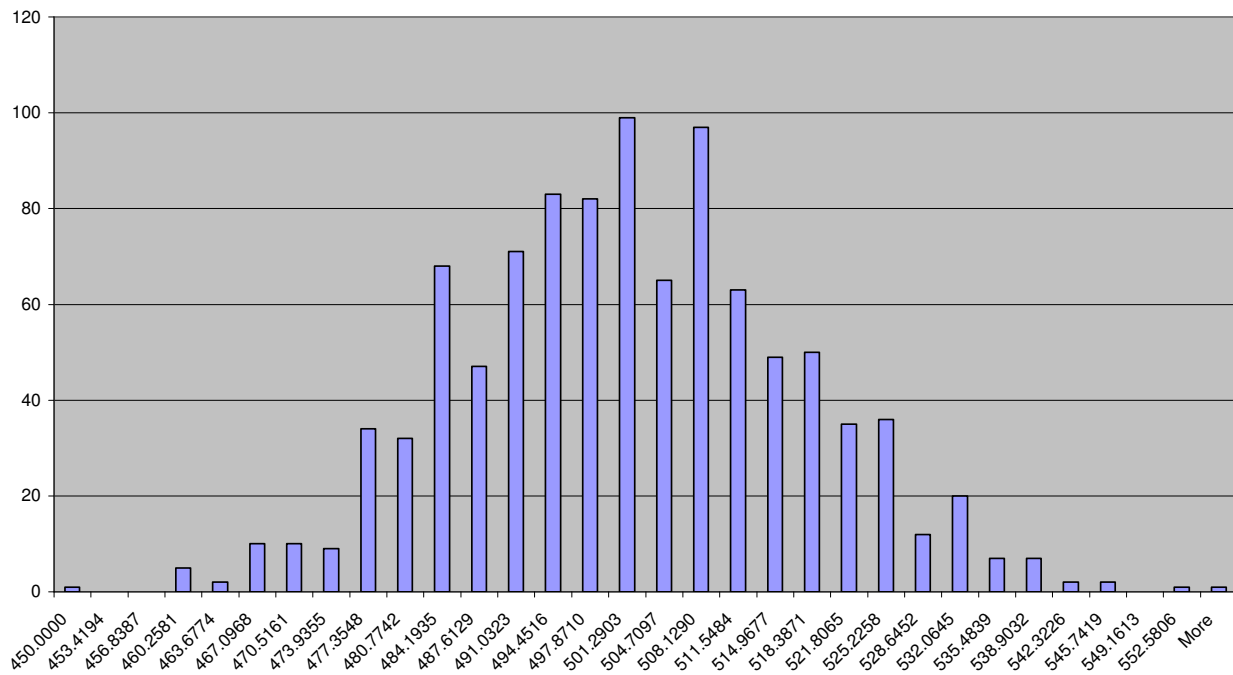
We generate random "1000" numbers which have "0.5" p value and number of trials "1000" according to binomial distribution. The chart of the distribution is,

Binomial Distribution Range



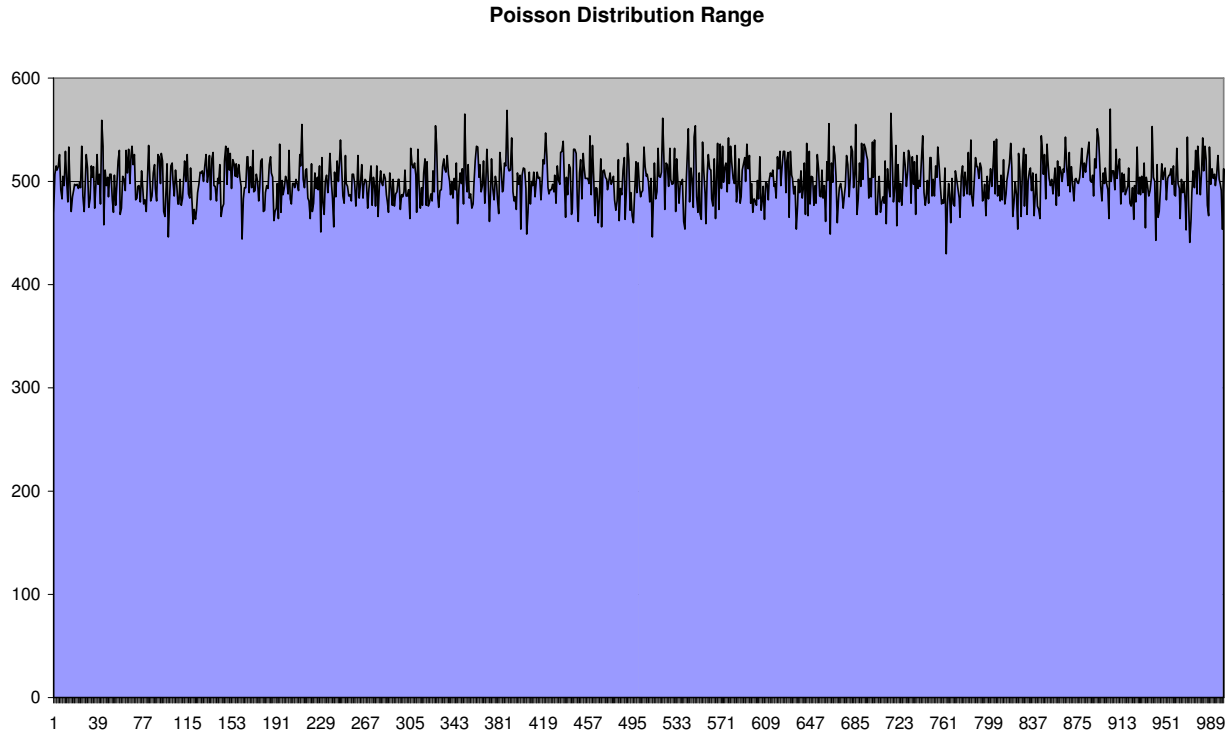
The histogram of the distribution is,

Histogram of Binomial Distribution



Poisson Distribution;

We generate random "1000" numbers which have "500" lambda according to Poisson distribution. The chart of the distribution is,



The histogram of the distribution is,

