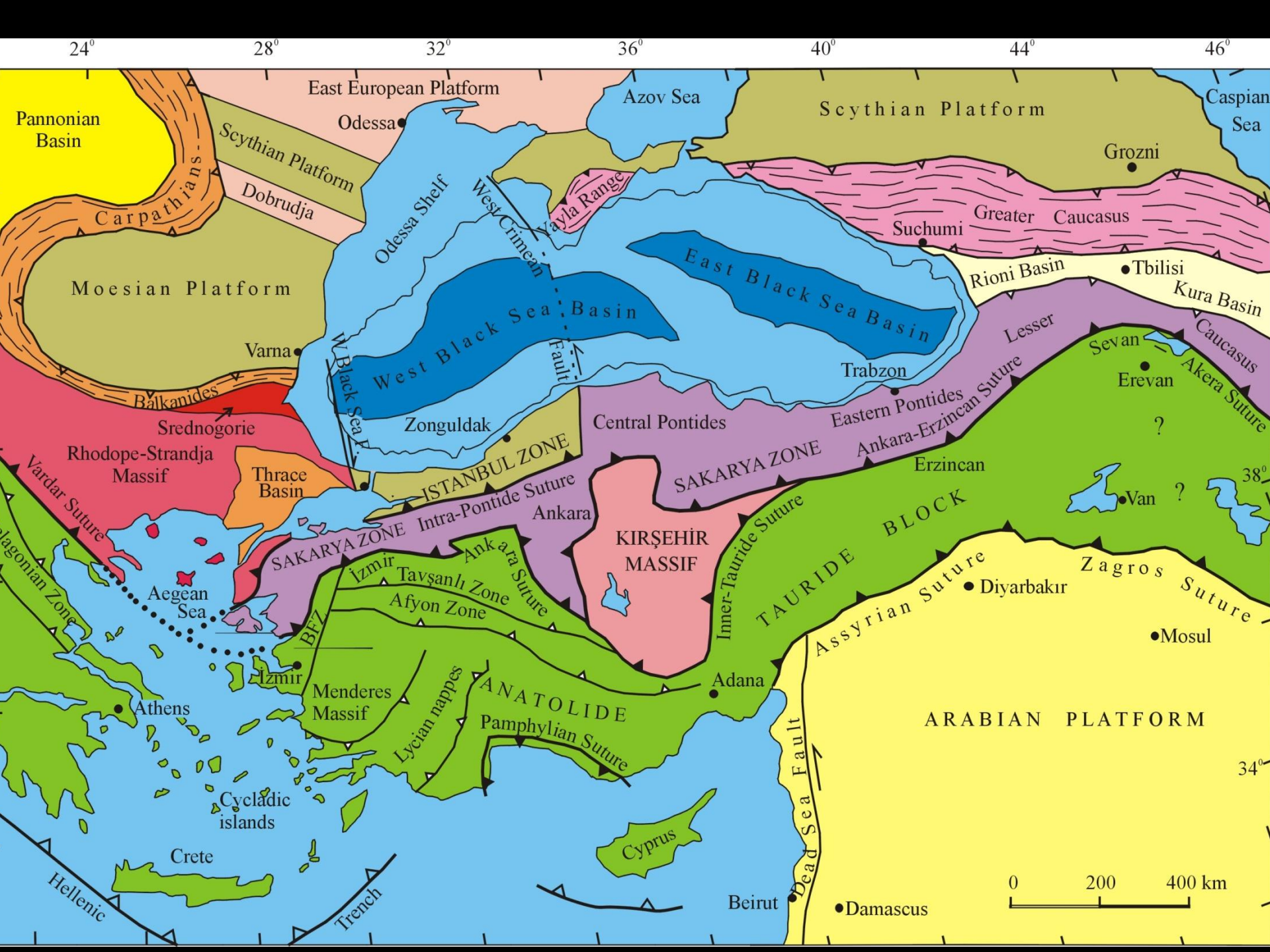


ISTRANCA MASİFİ

Aral Okay

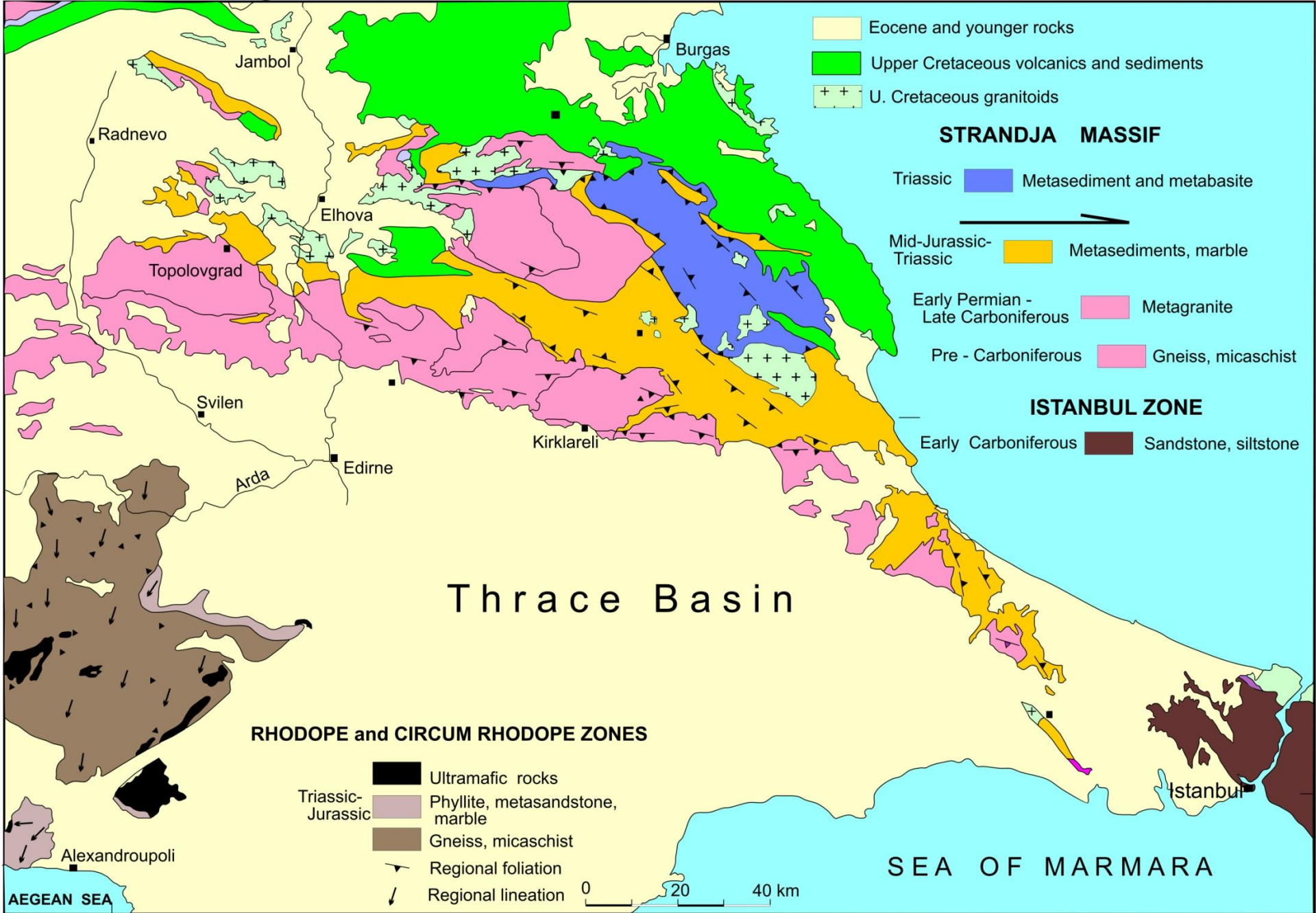
İstanbul Teknik Üniversitesi

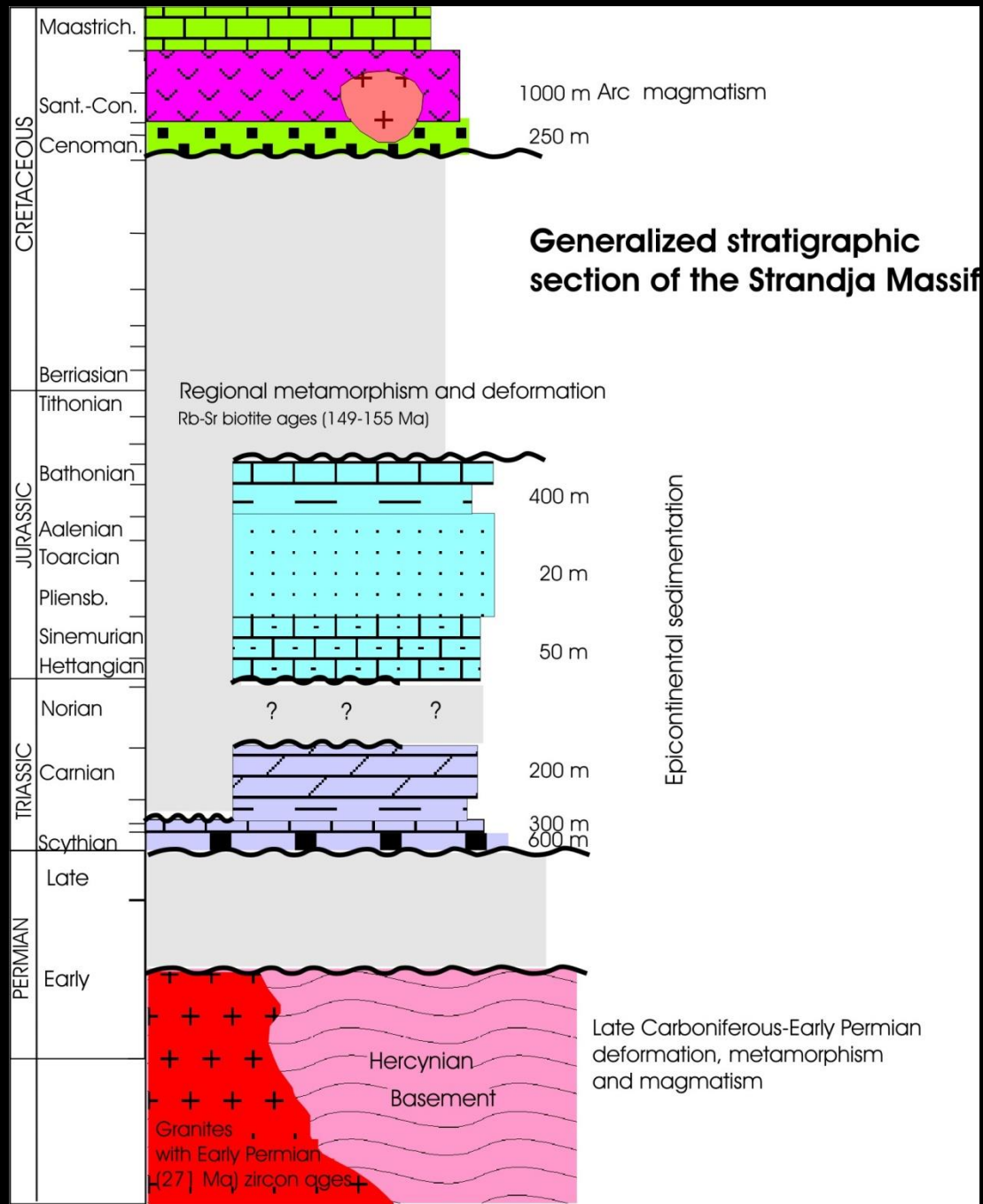


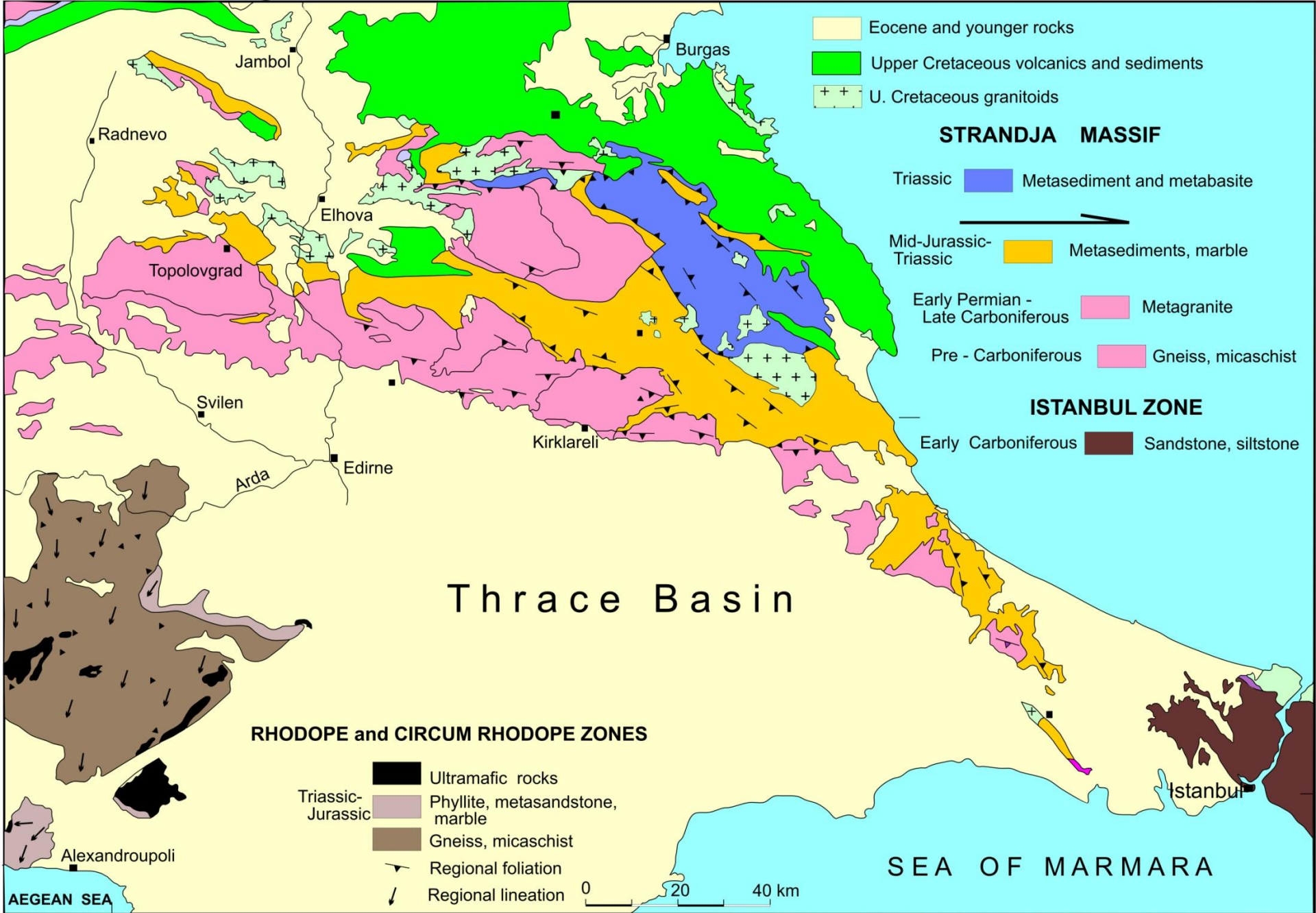


Metamorphic rocks between the Balkanides and the Vardar - Intra-Pontide sutures.

Tectonic map of the northern Aegean and the Balkans







Basement gneisses and amphibolite



Early Permian Kırklareli Granite



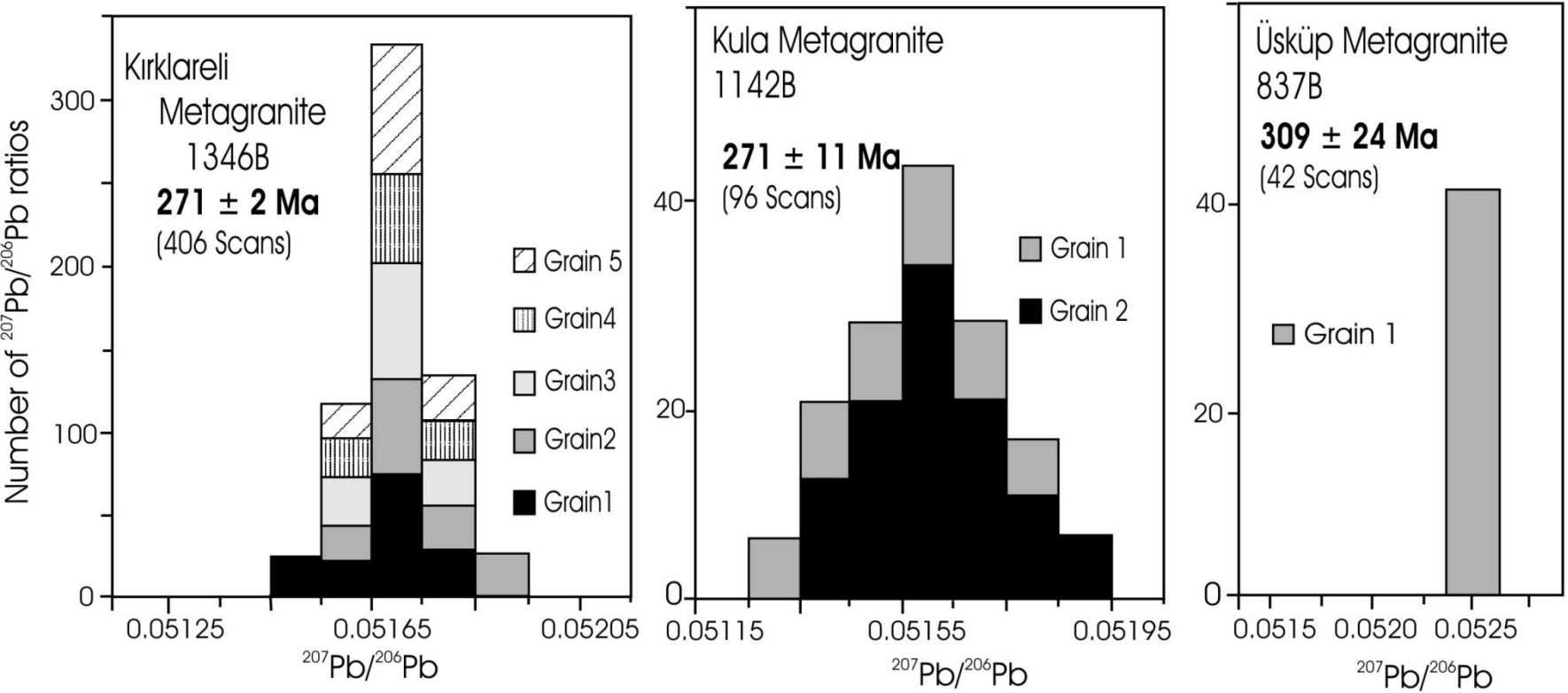
Kirklareli Granite



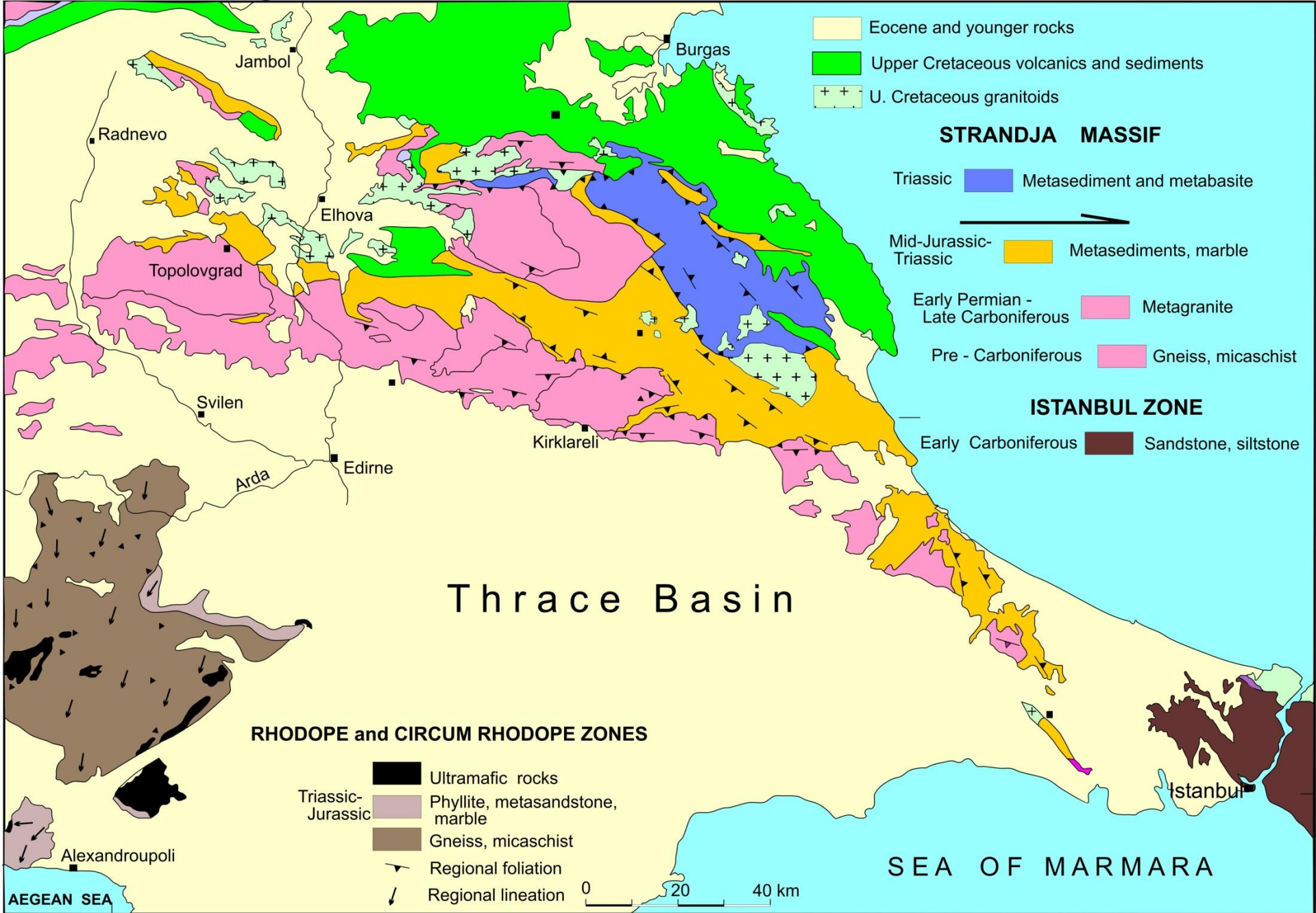
Kirklareli Granite



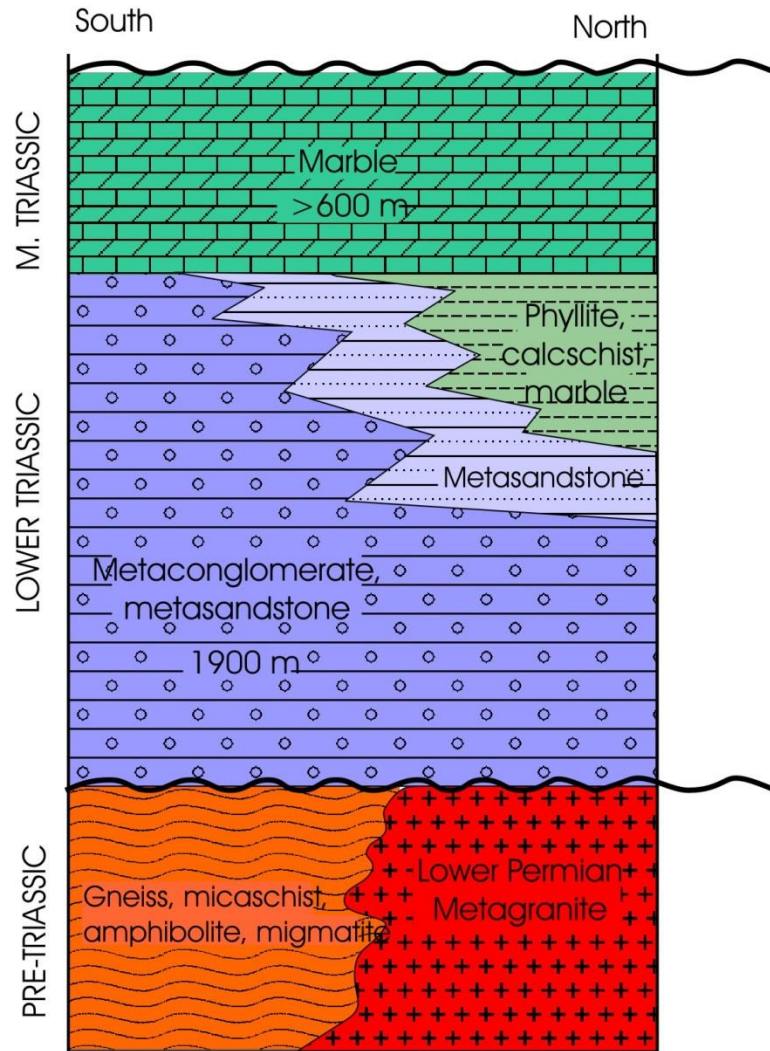
Early Permian Metagranites



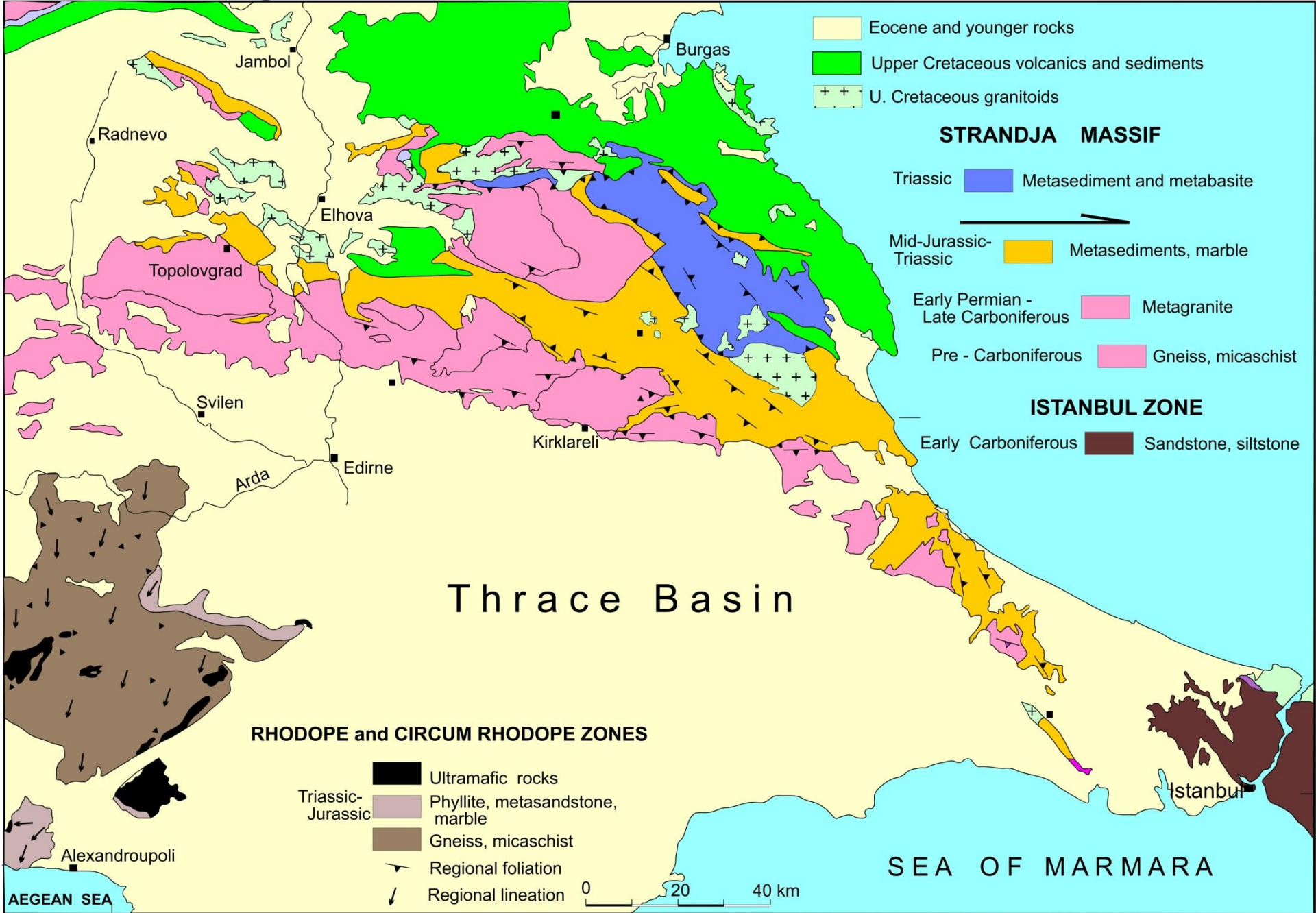
Radiogenic Pb isotope ratios from individual zircon grains from the metagranites of the Strandja basement (Okay et al. 2001)




STRANDJA MASSIF



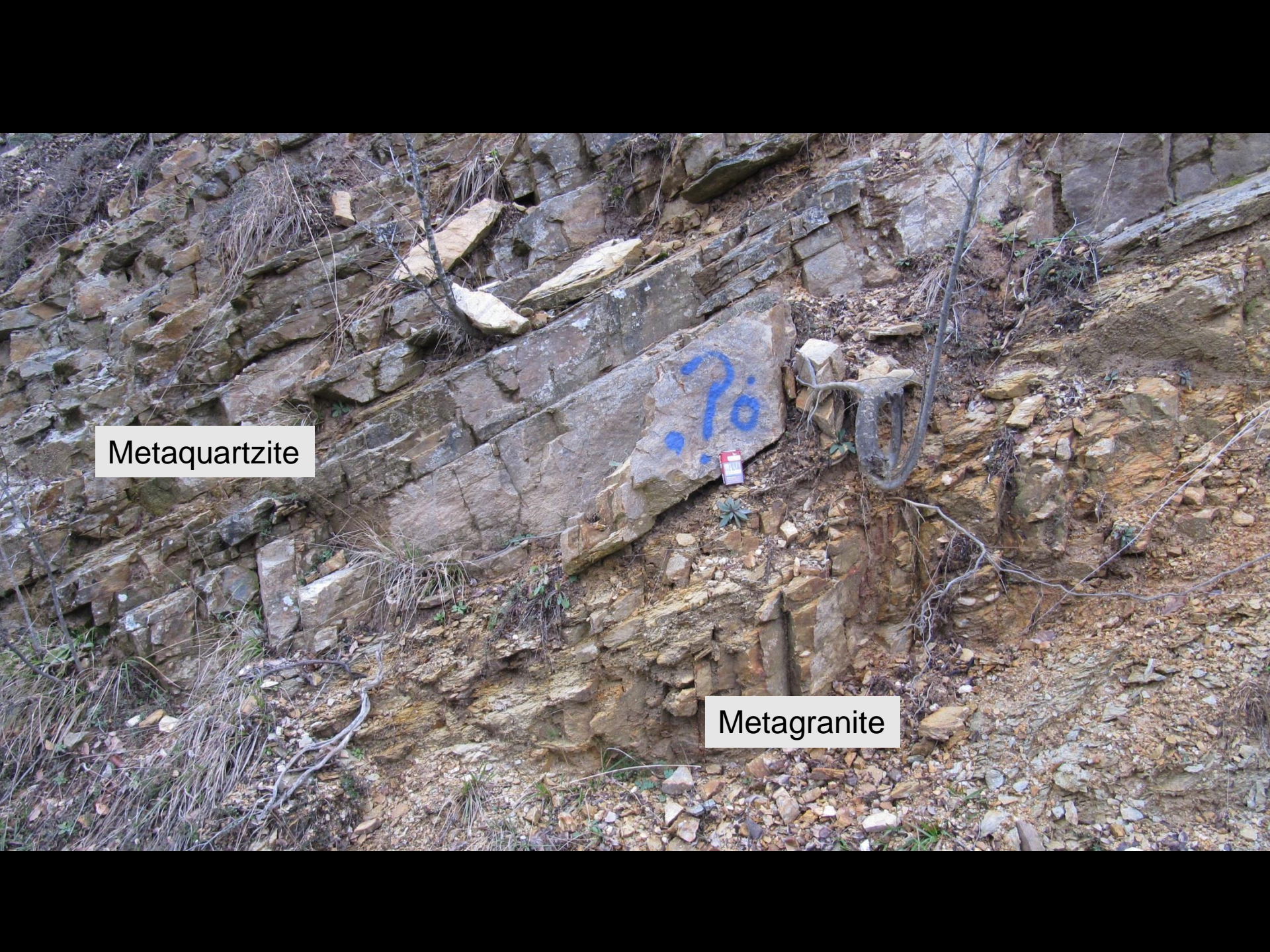
Stratigraphic section in the Turkish part of the Strandja Massif






Metaquartzite

Metagranite

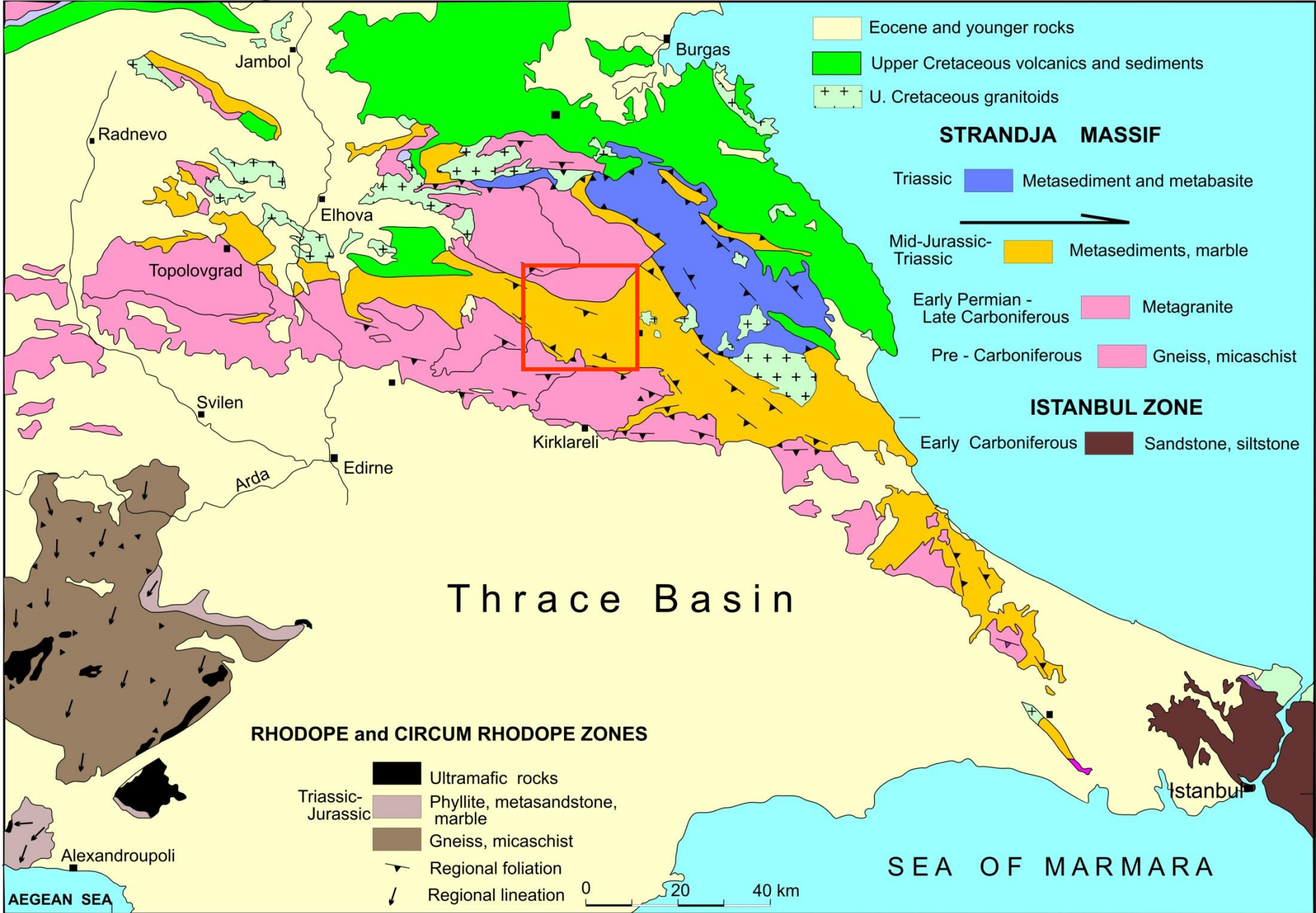


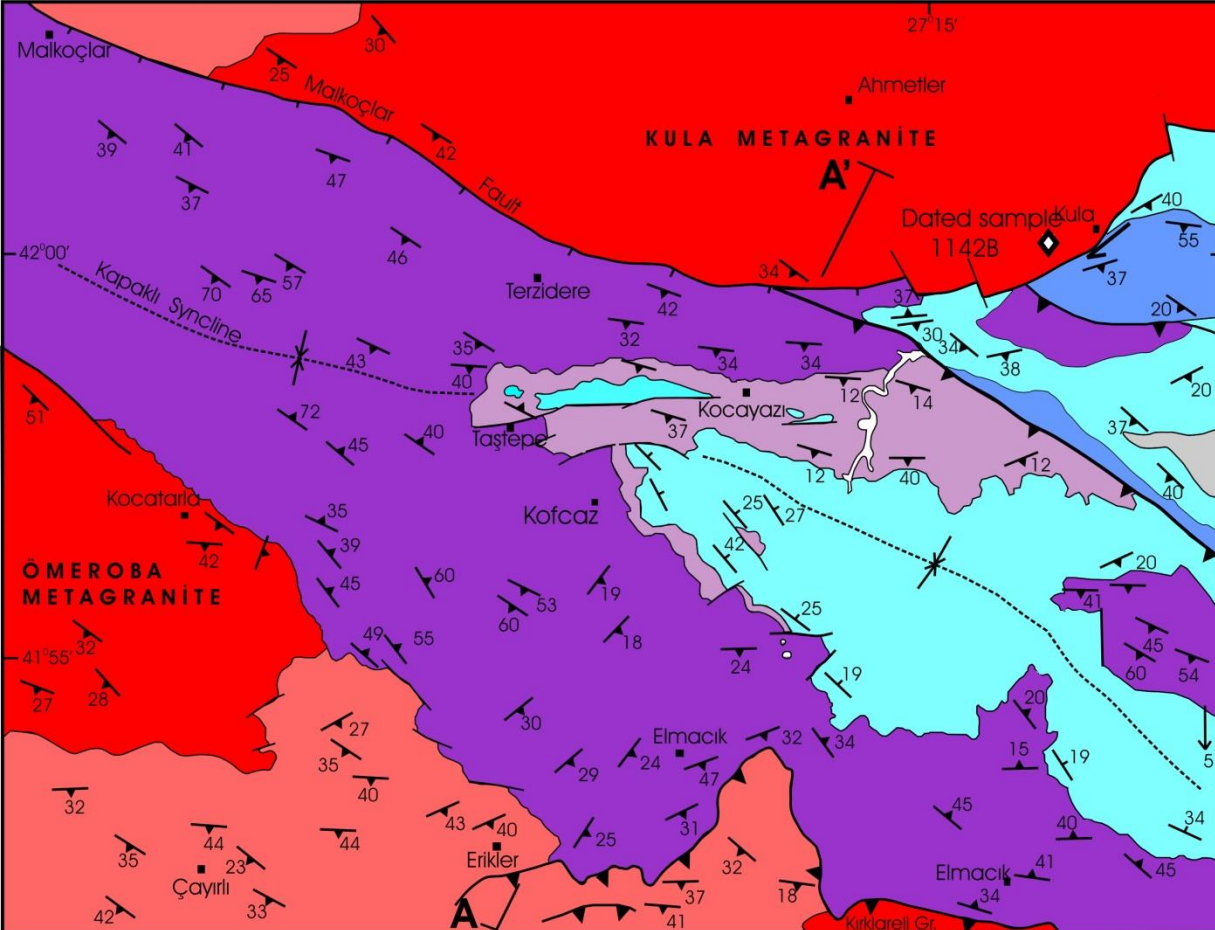
Metaquartzite

Metagranite

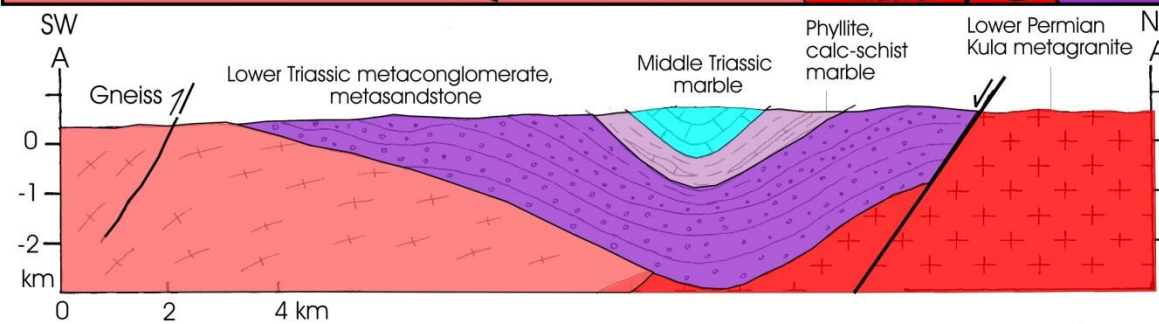


Metaquartzite





- ? Jurassic slate and metasilstone
- M. Triassic marble
- Lower Triassic phyllite, calc-schist, marble
- Lower Triassic metaconglomerate, metasandstone, metaquartzite
- Lower Permian metagranites
- Gneiss, micaschist



Geological map of the Kapaklı syncline, Strandja massif, Turkey (Okay et al., 2001)

Marble

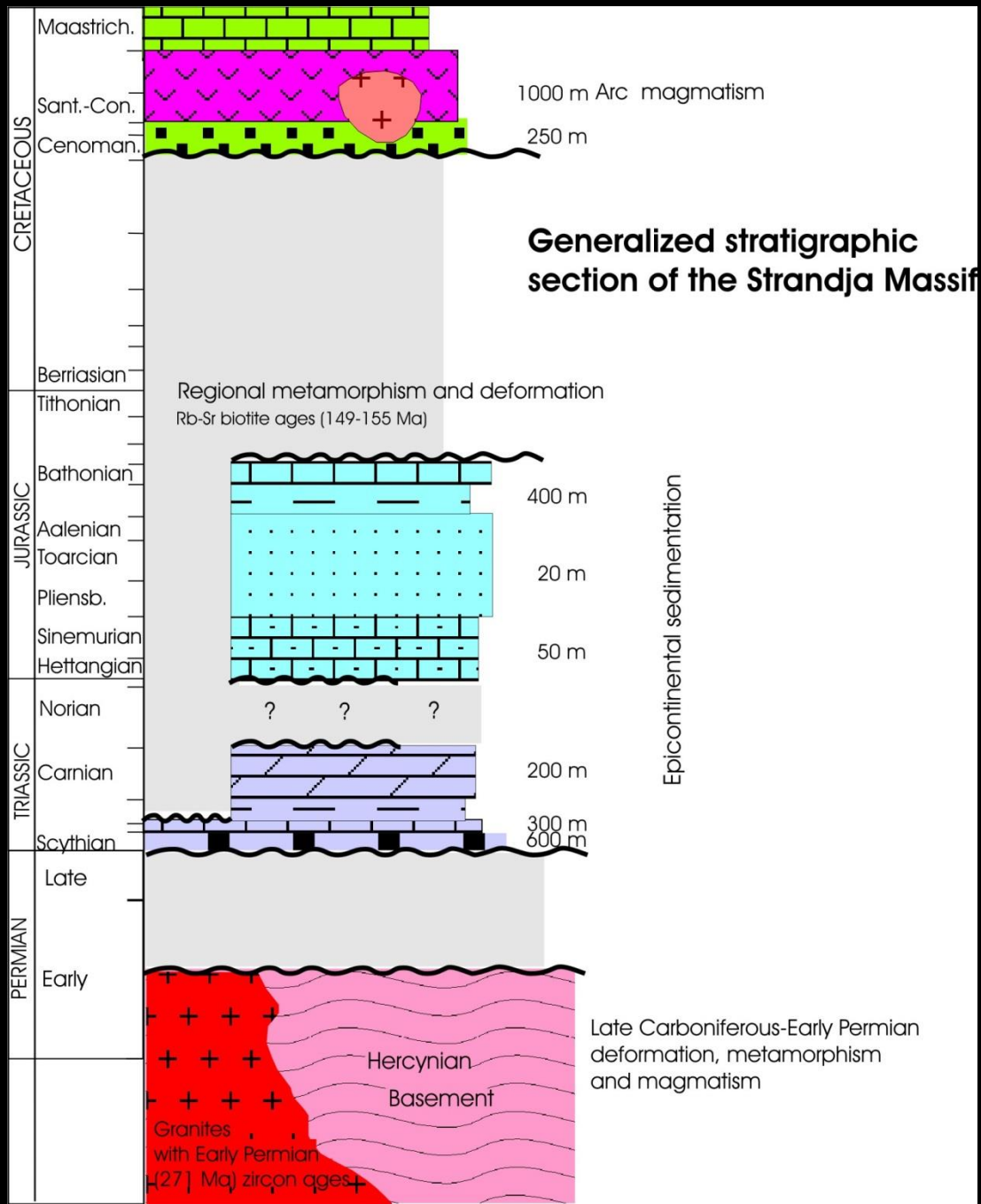
Metaclastics

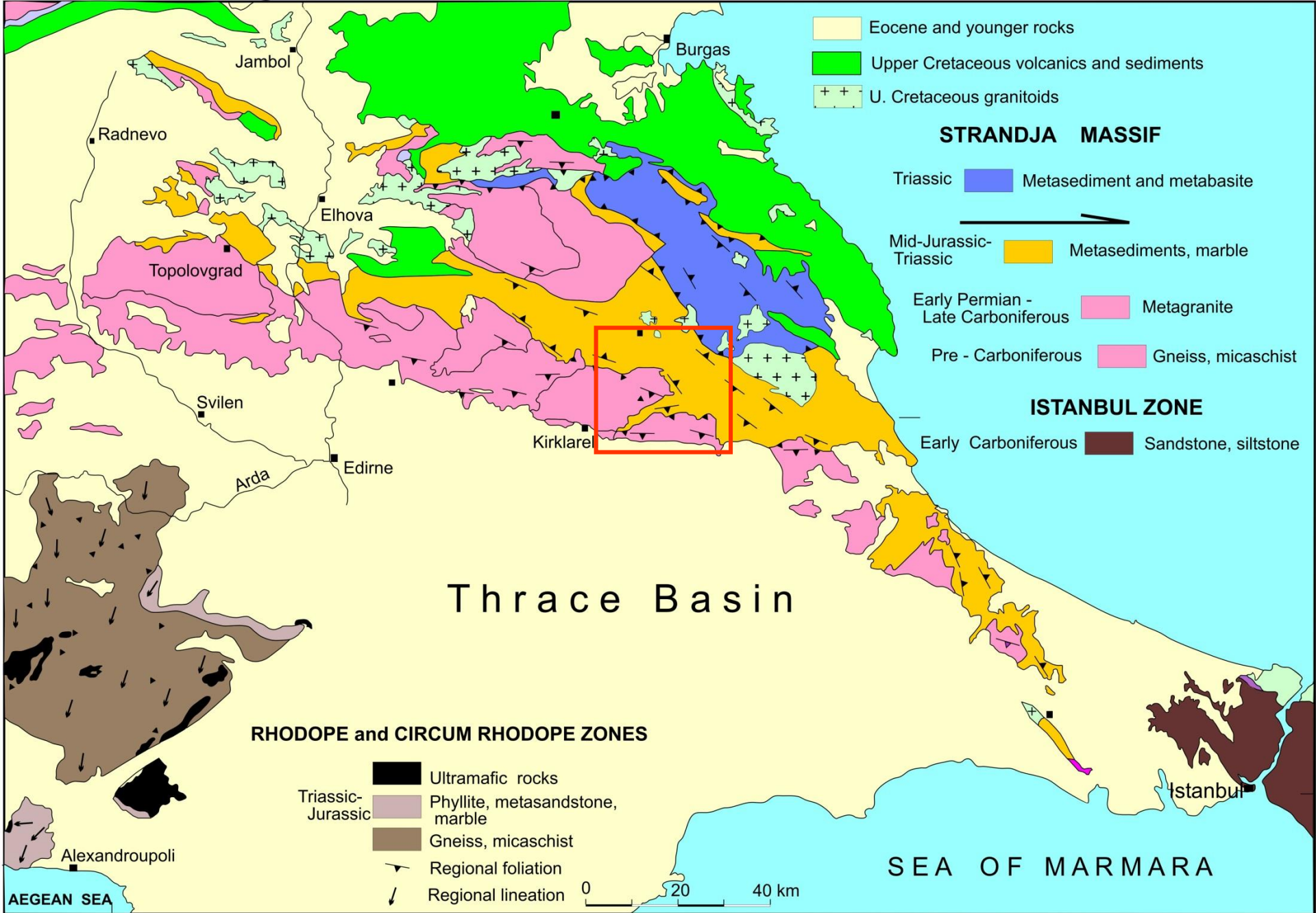


Metaconglomerate





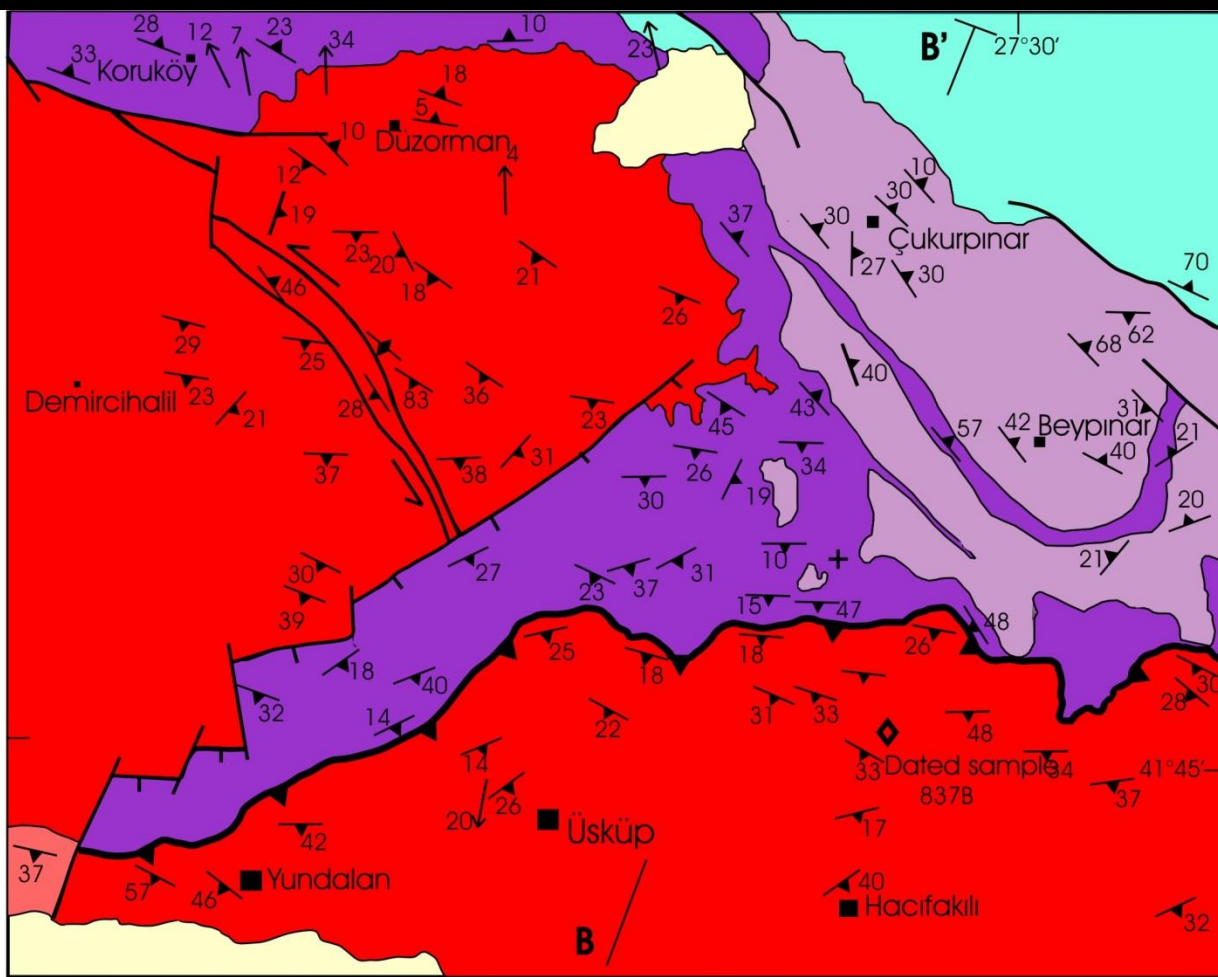




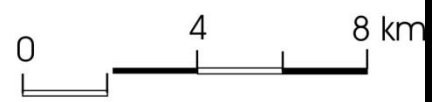
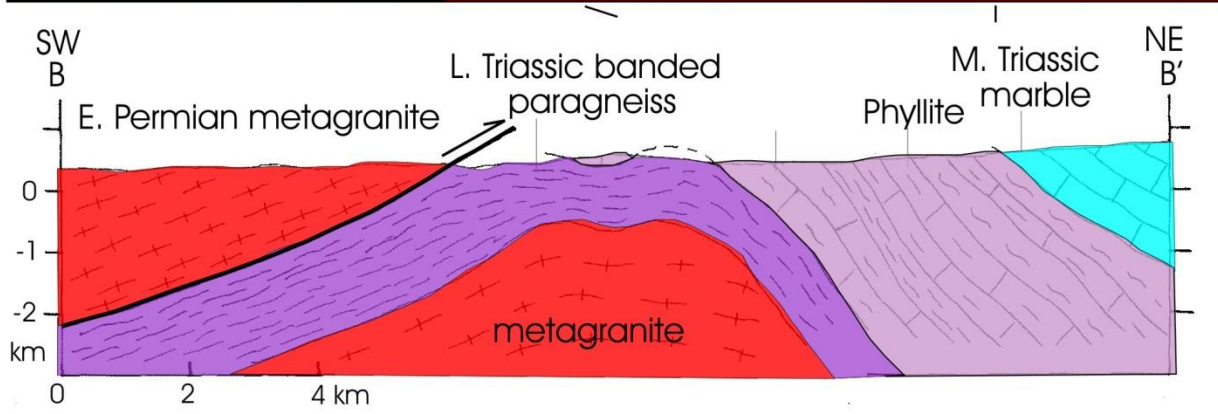
Thrace Basin

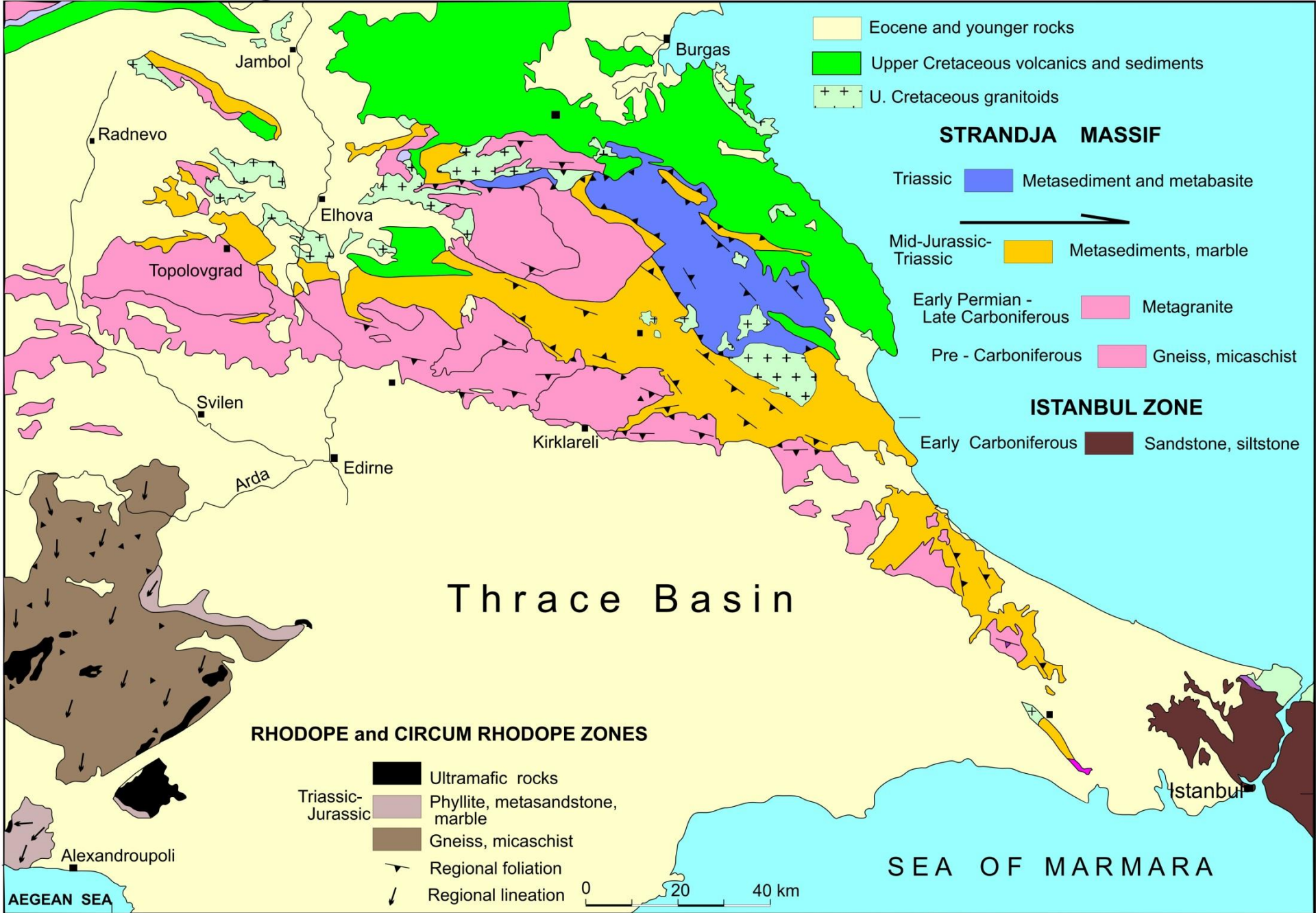
SEA OF MARMARA

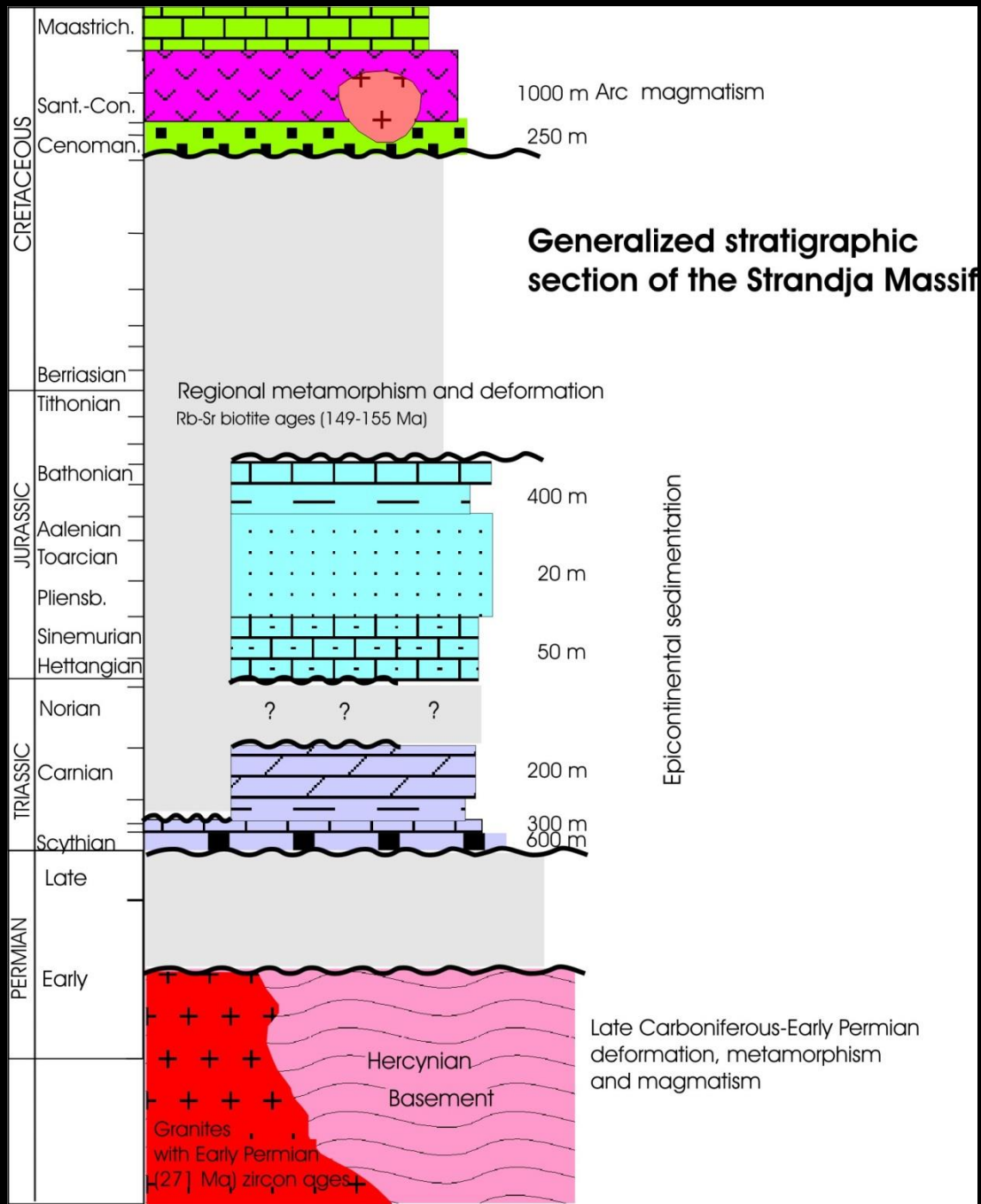
AEGEAN SEA



Geological map and cross-section of the south-central Strandja Masif, Turkey (Okay et al. 2001)







Cretaceous (Cenomanian)
Carbonate-rich sandstone

phyllite

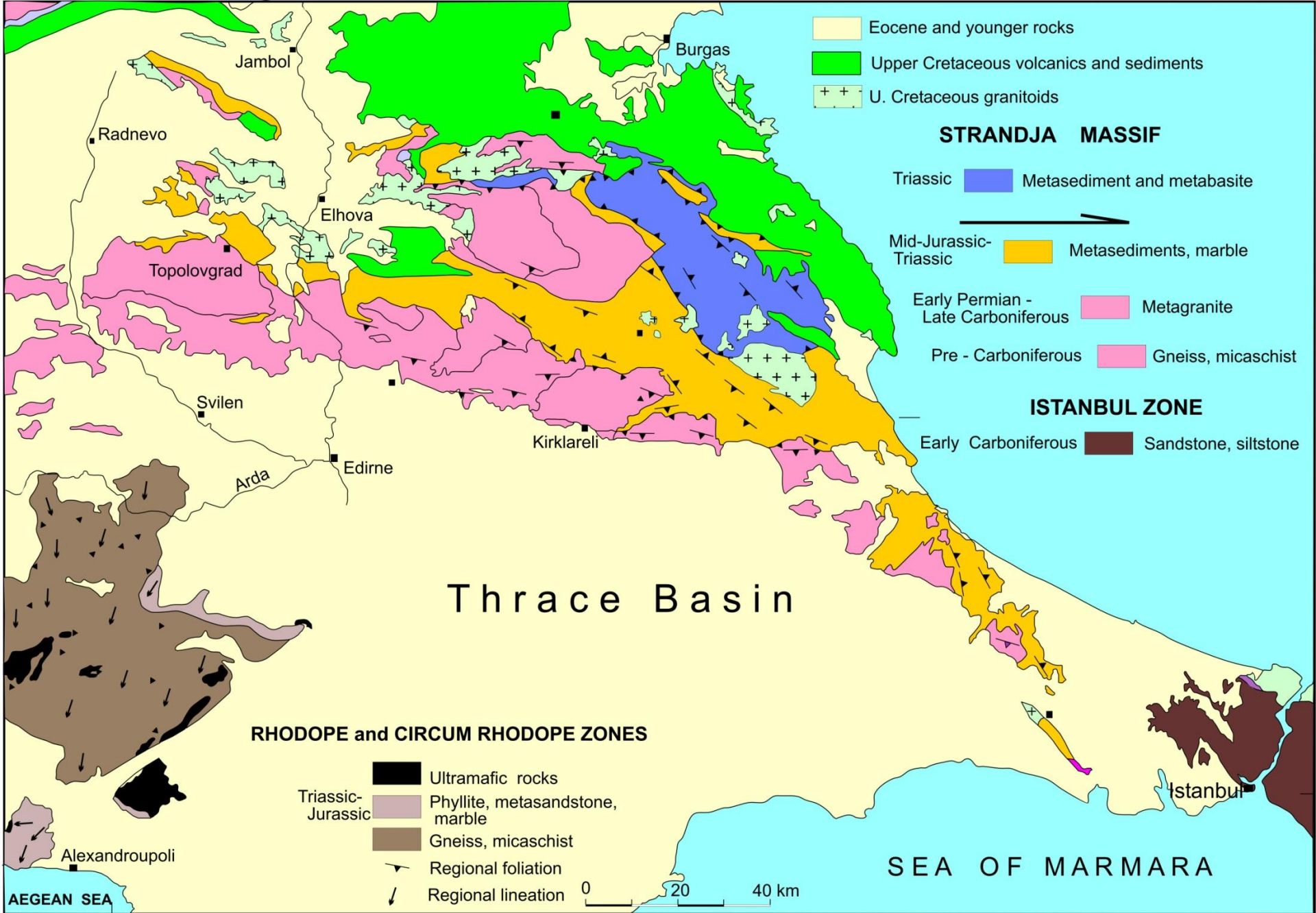


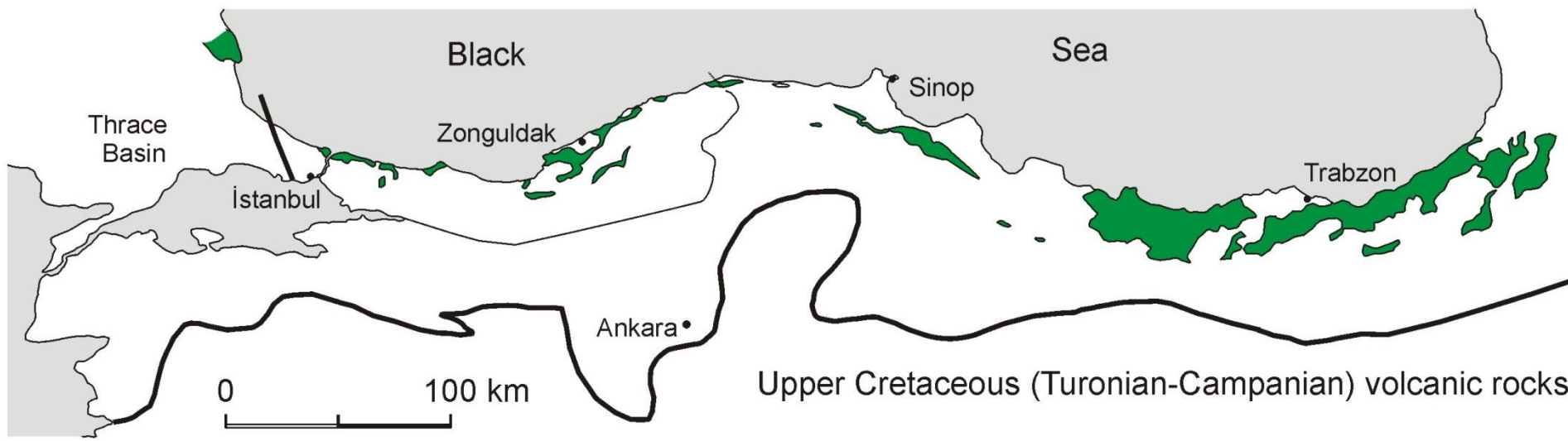
Cretaceous siltstones

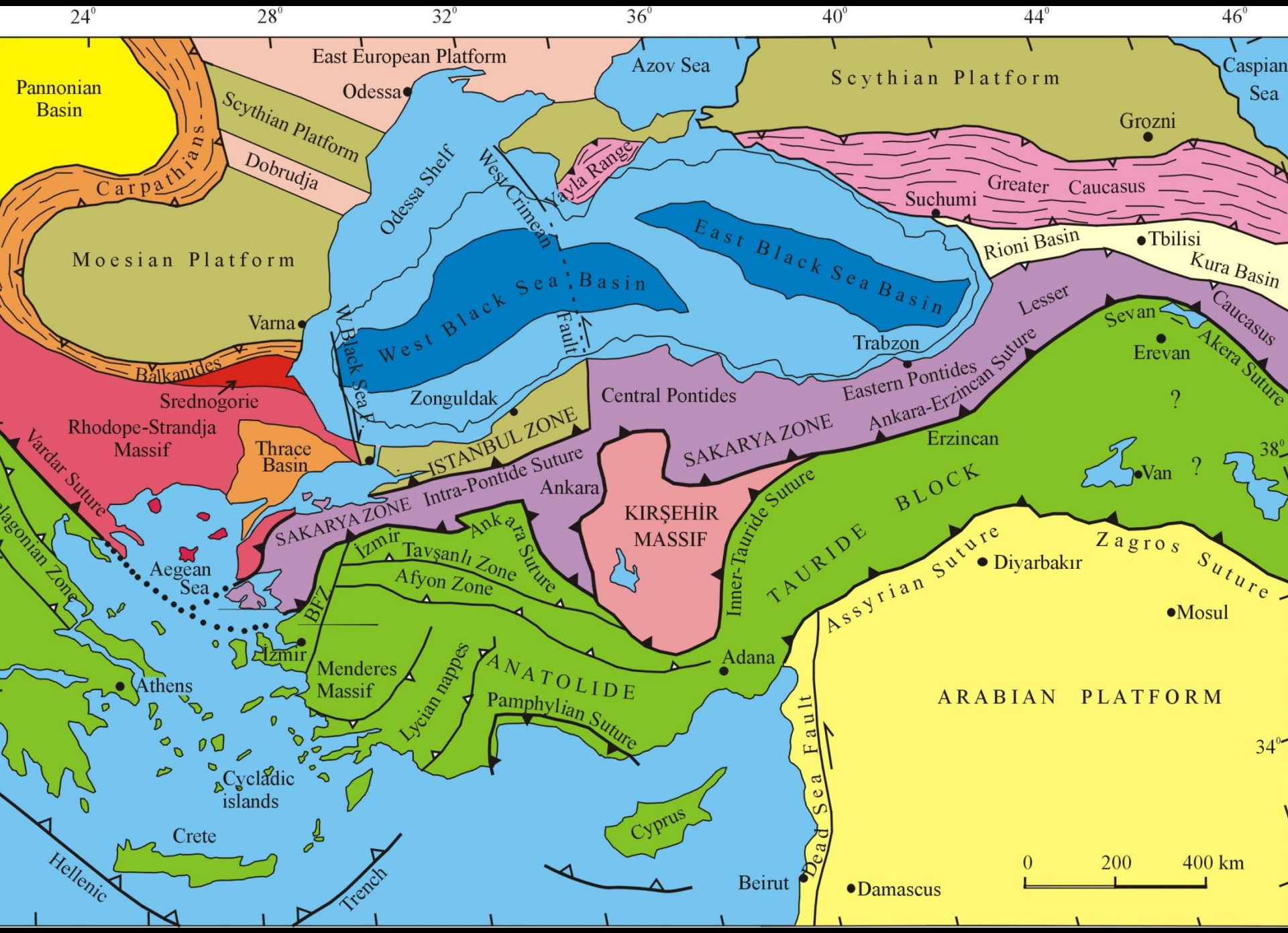




Cretaceous tuffs







Middle Triassic

SW

Strandja Massif

NE

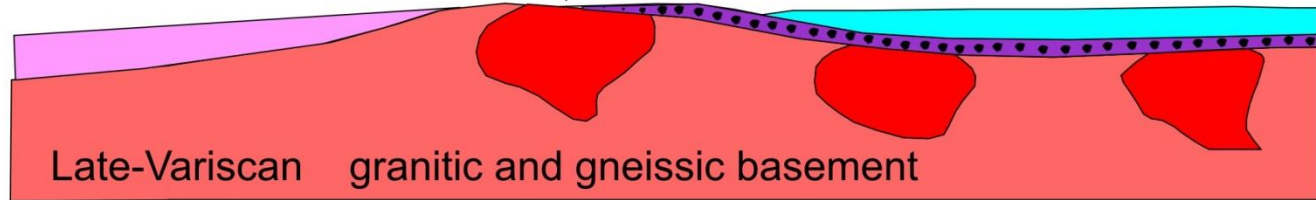
Early Permian granites

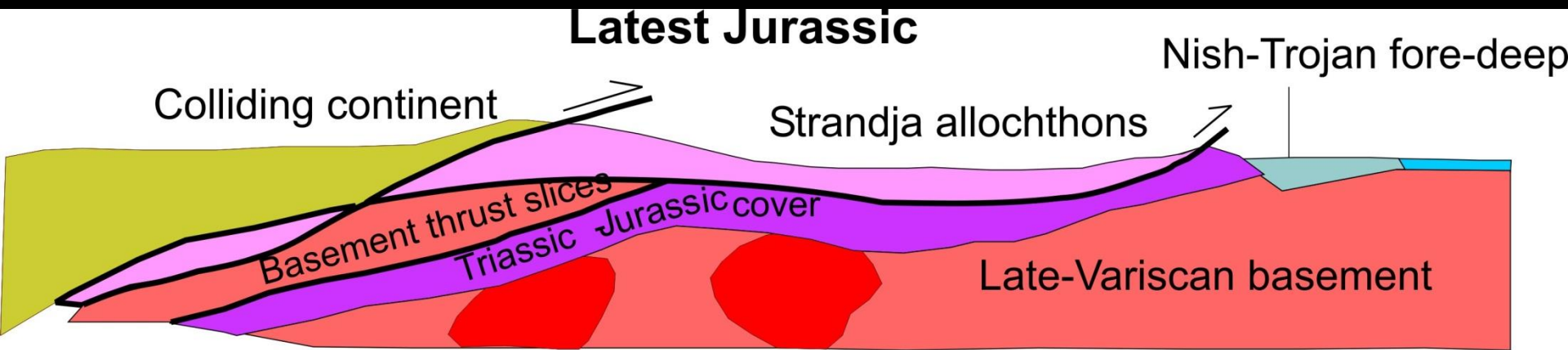
Epicontinental sedimentation

Continental margin
of the Paleo-Tethys

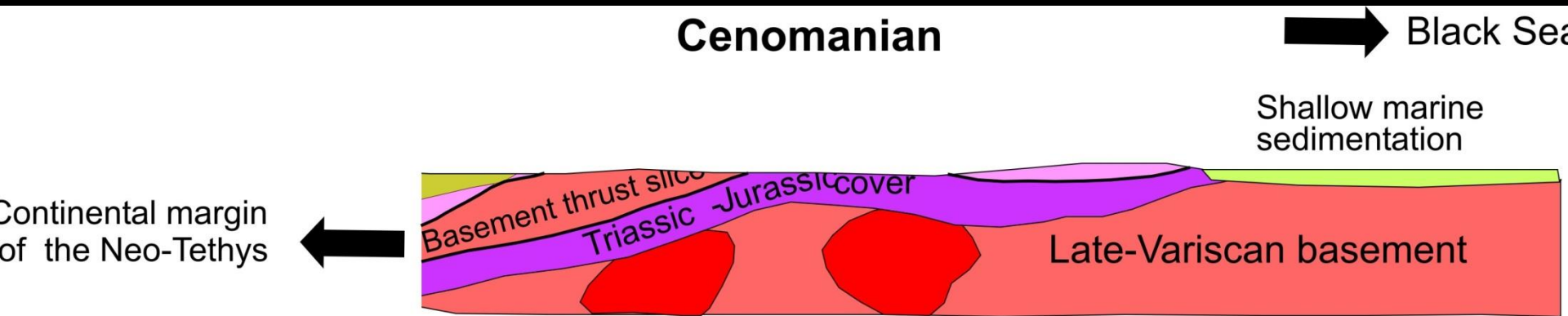


Late-Variscan granitic and gneissic basement





Cross-section illustrating the Late Jurassic tectonic evolution of the Strandja Massif (Okay et al. 2001).



S

N

Senonian

Neo-Tethyan Vardar ocean

Srednogorie magmatic arc



Consolidated
Strandja Massif

Istranca Masifi

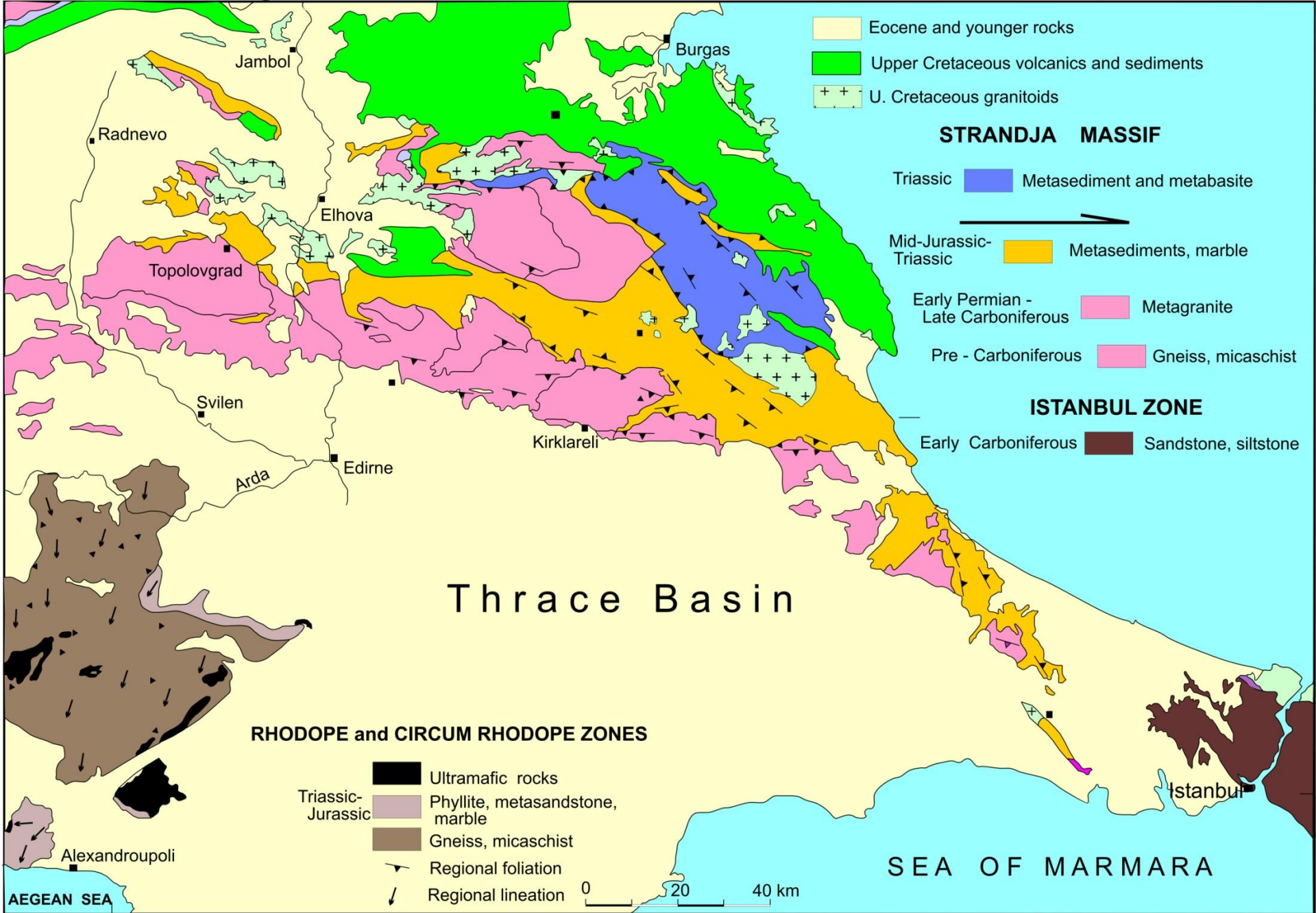
1. Ge Hersiniyen metamorfik ve granitik temel.
2. Karasal, sıđ denizel Triyas-Jura istifi.
3. Jura-Kretase sınırında metamorfizma ve kuzeye-verjanslı deformasyon.
4. Senomaniyen (Alt Kretase) ökelleri metamorfikler üzerinde uyumsuzlukla yer alıyor.

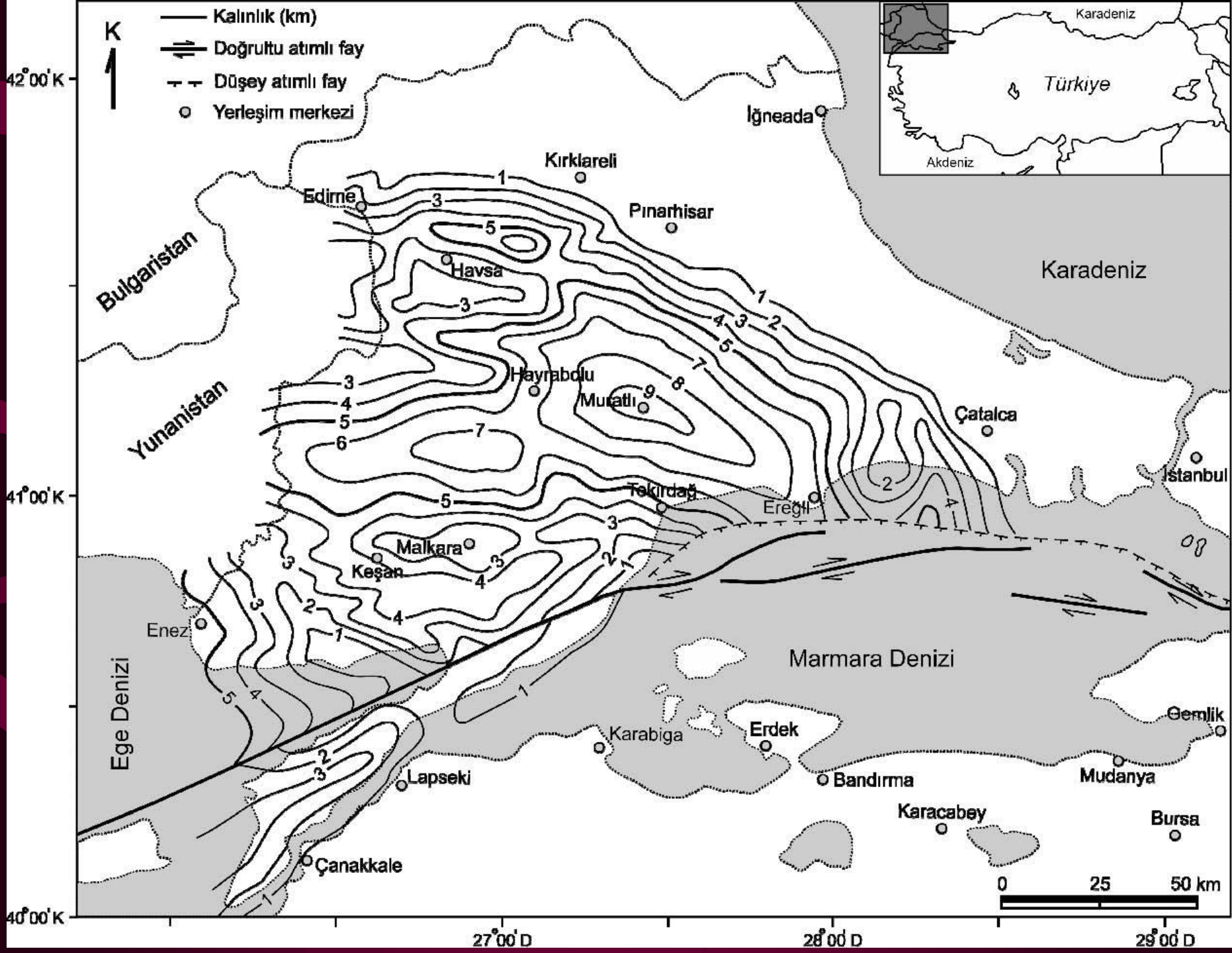
TRAKYA HAVZASI

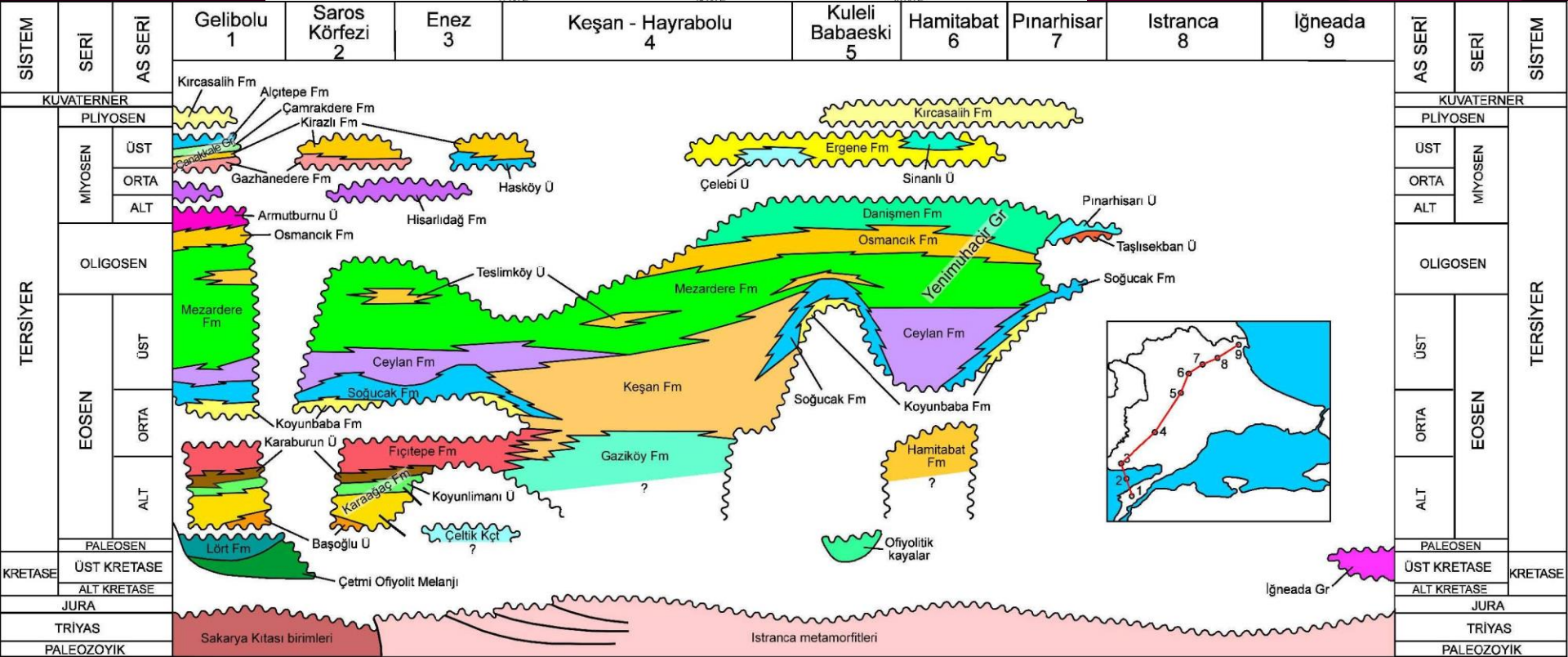
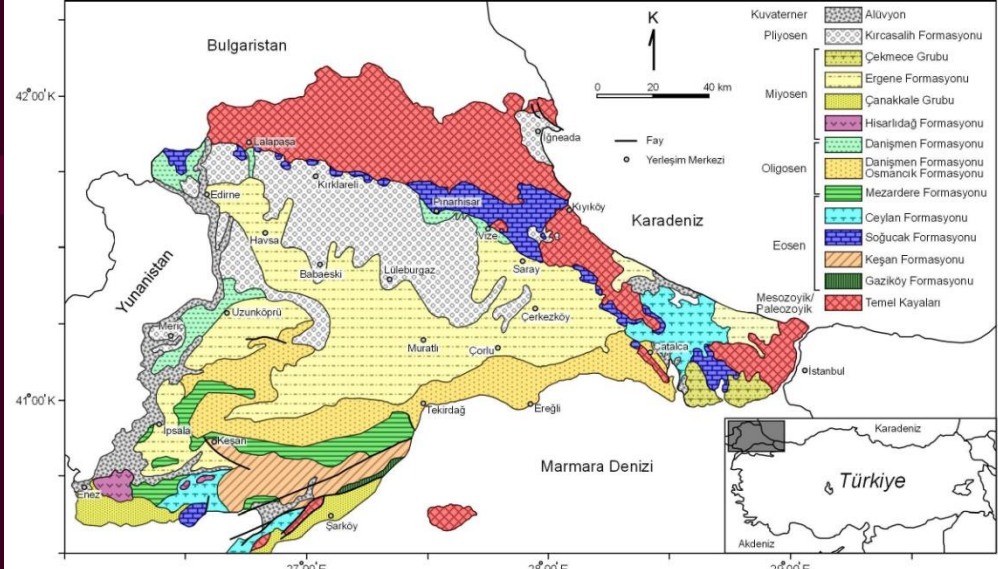
Eosen-Oligosen

Aral Okay

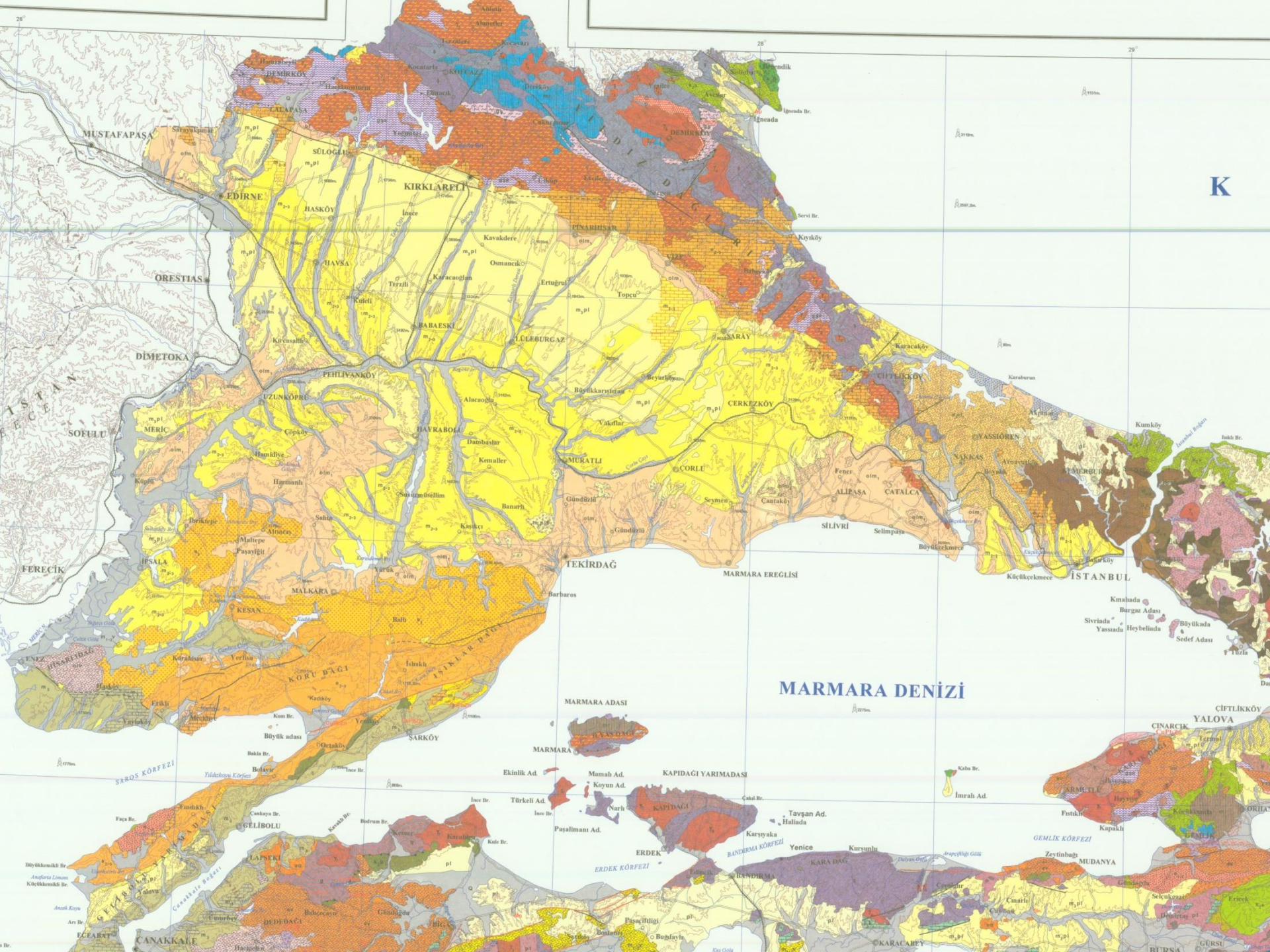
İstanbul Teknik Üniversitesi



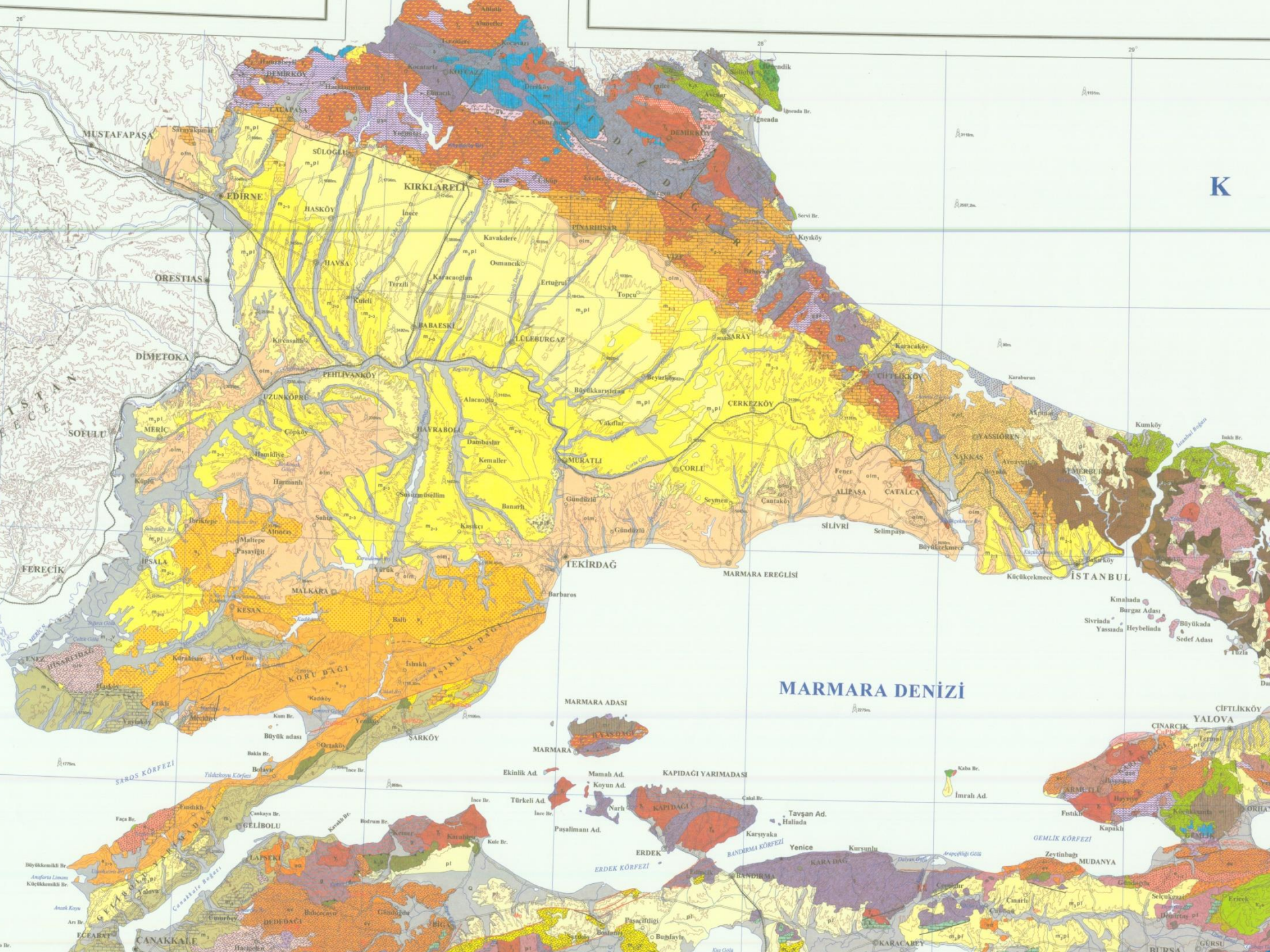




Şekil 3 - Trakya stratigrafisi (Siyako, 2002)







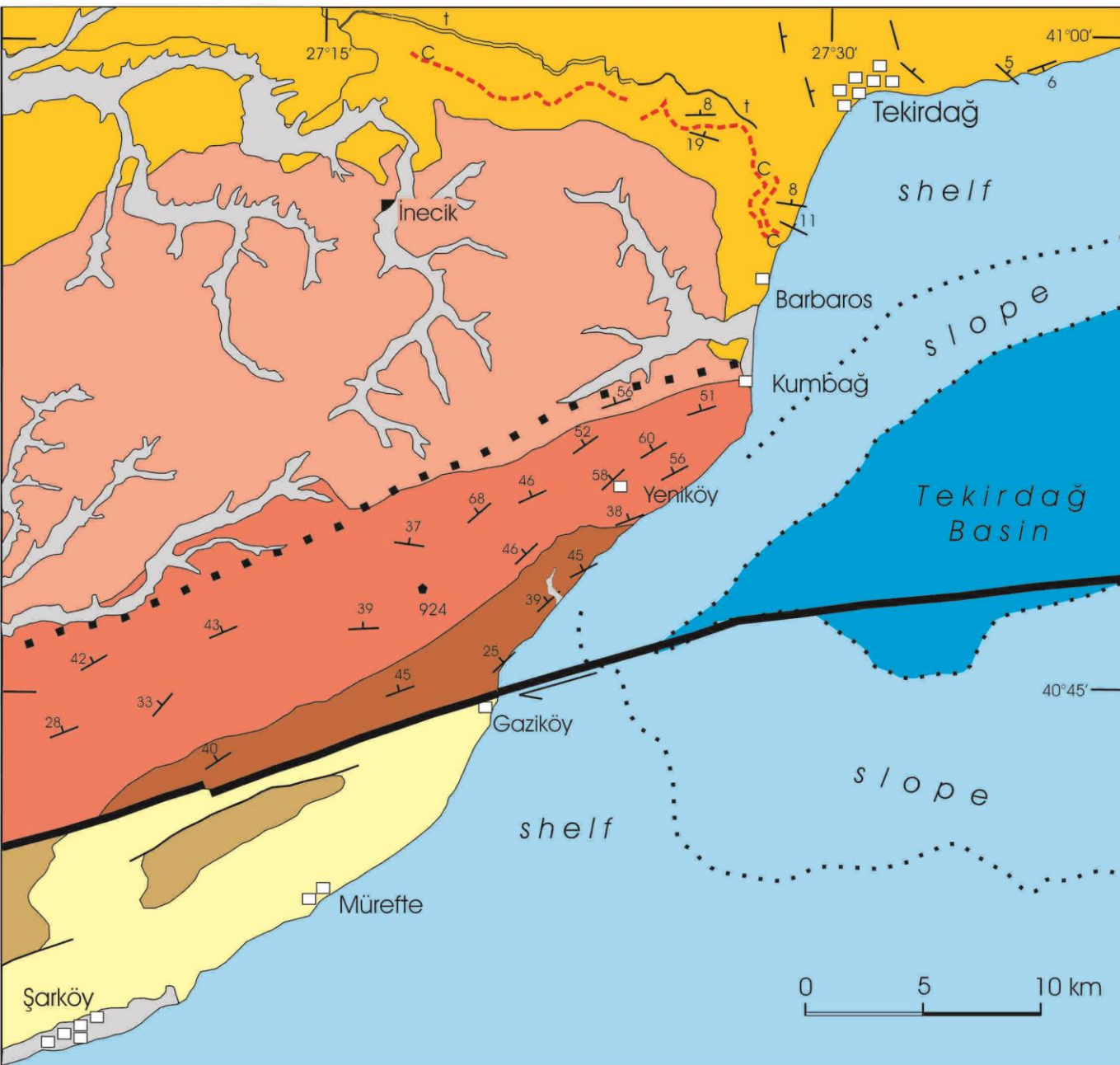
K

MARMARA DENİZİ

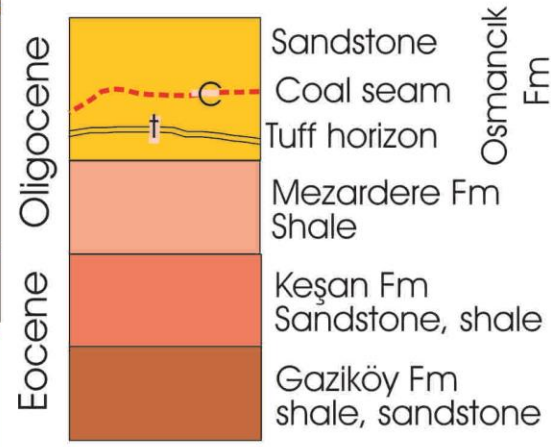
GEMLİK KÖRFEZİ

ERDEK KÖRFEZİ

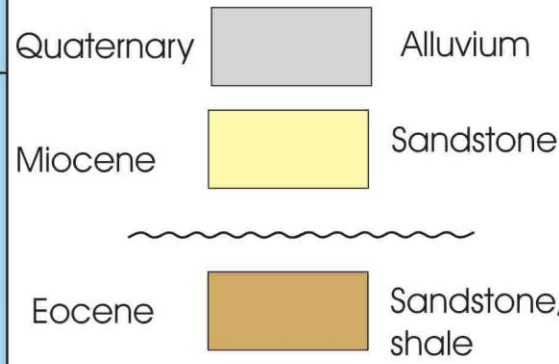
SAROS KÖRFEZİ

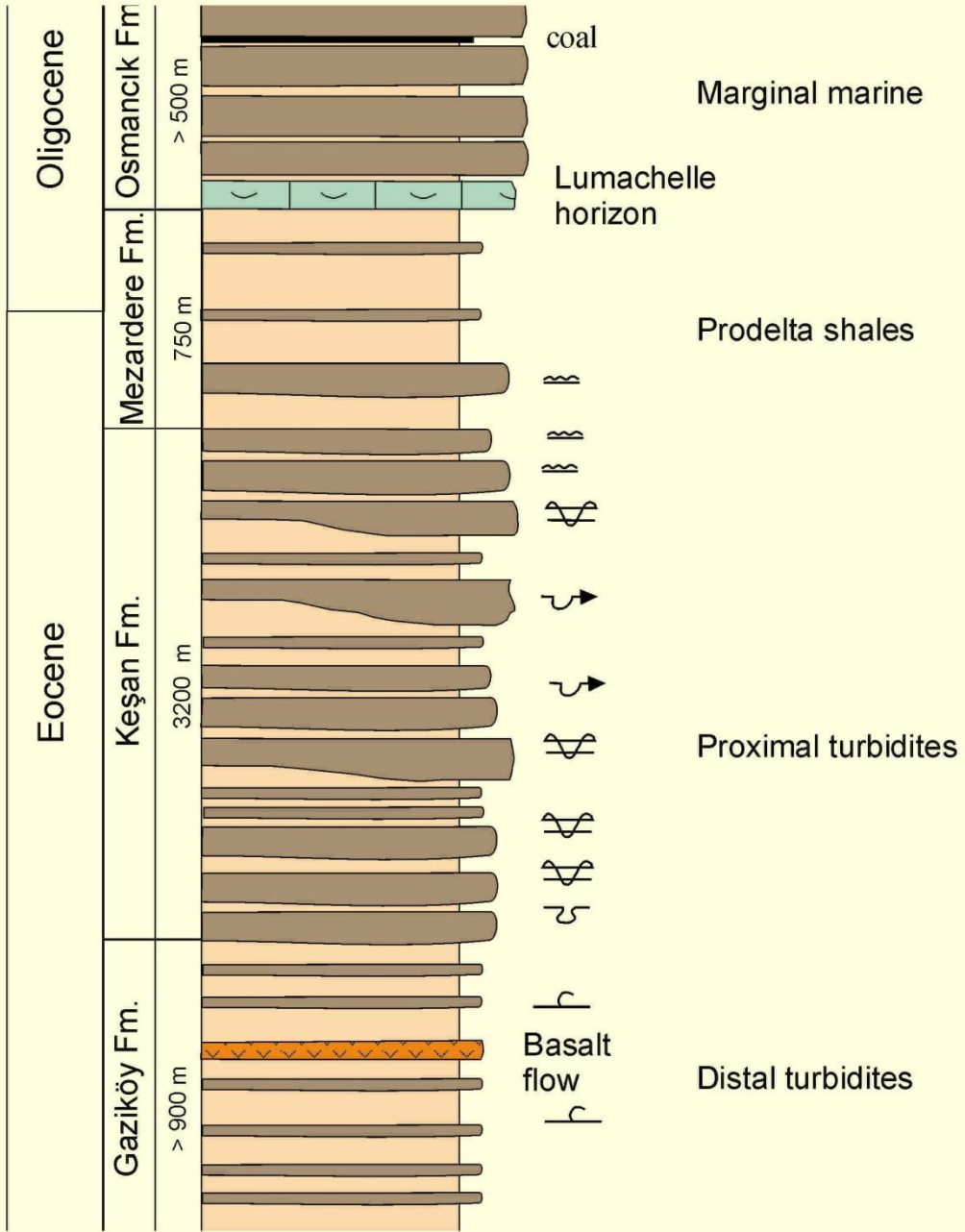


North of the Fault



South of the Fault

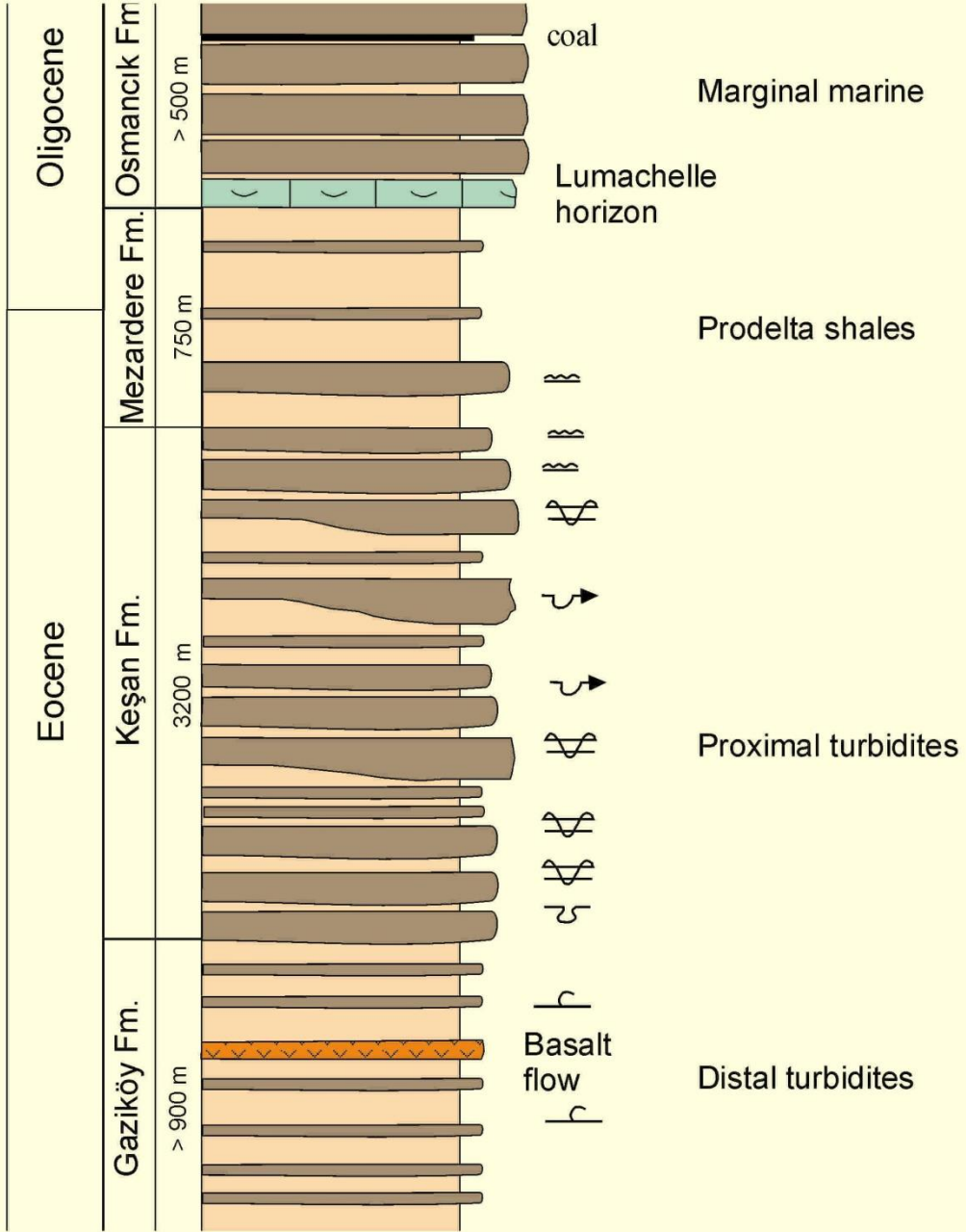




The stratigraphic sequence in the Ganos Mountains.







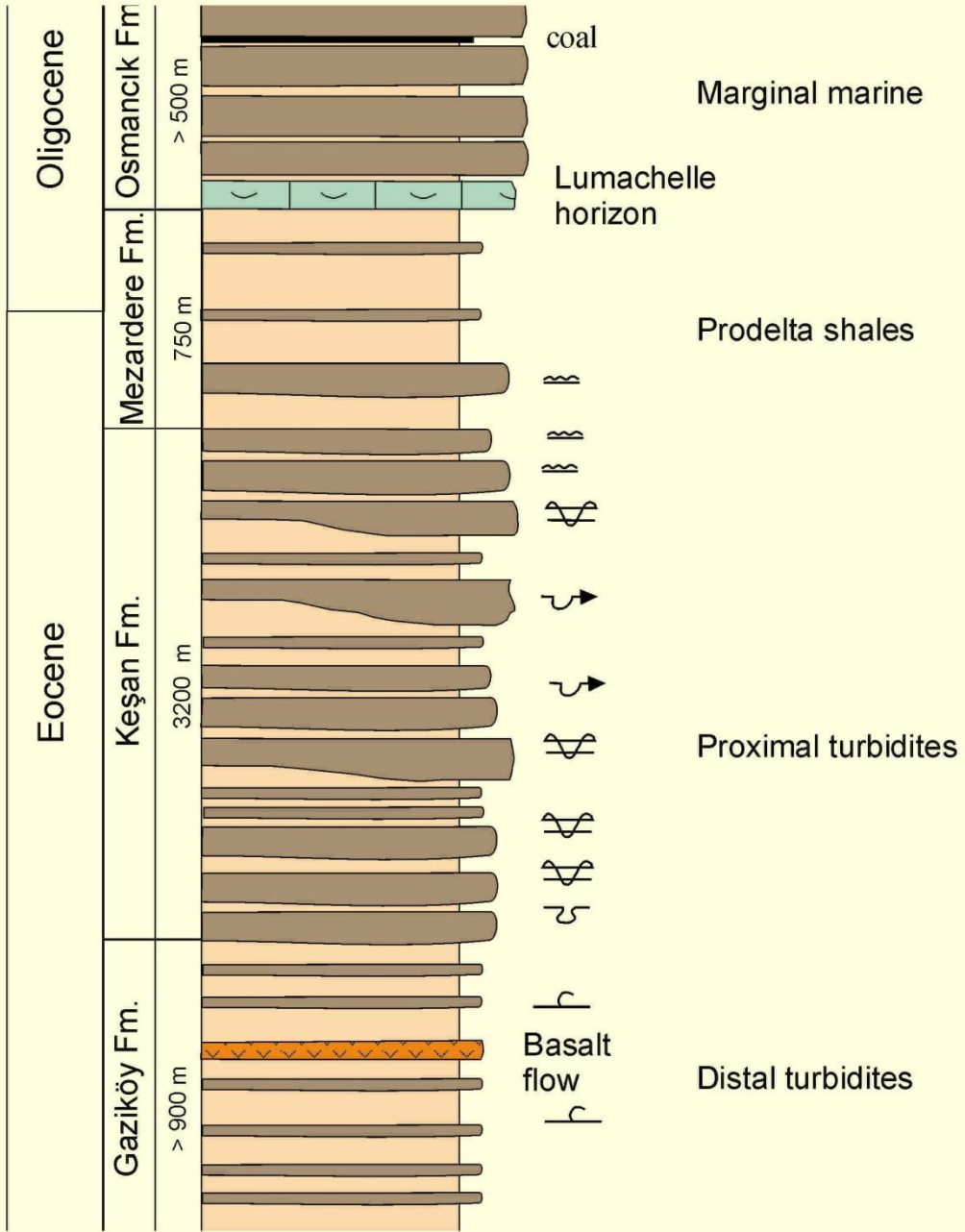
The stratigraphic sequence in the Ganos Mountains.









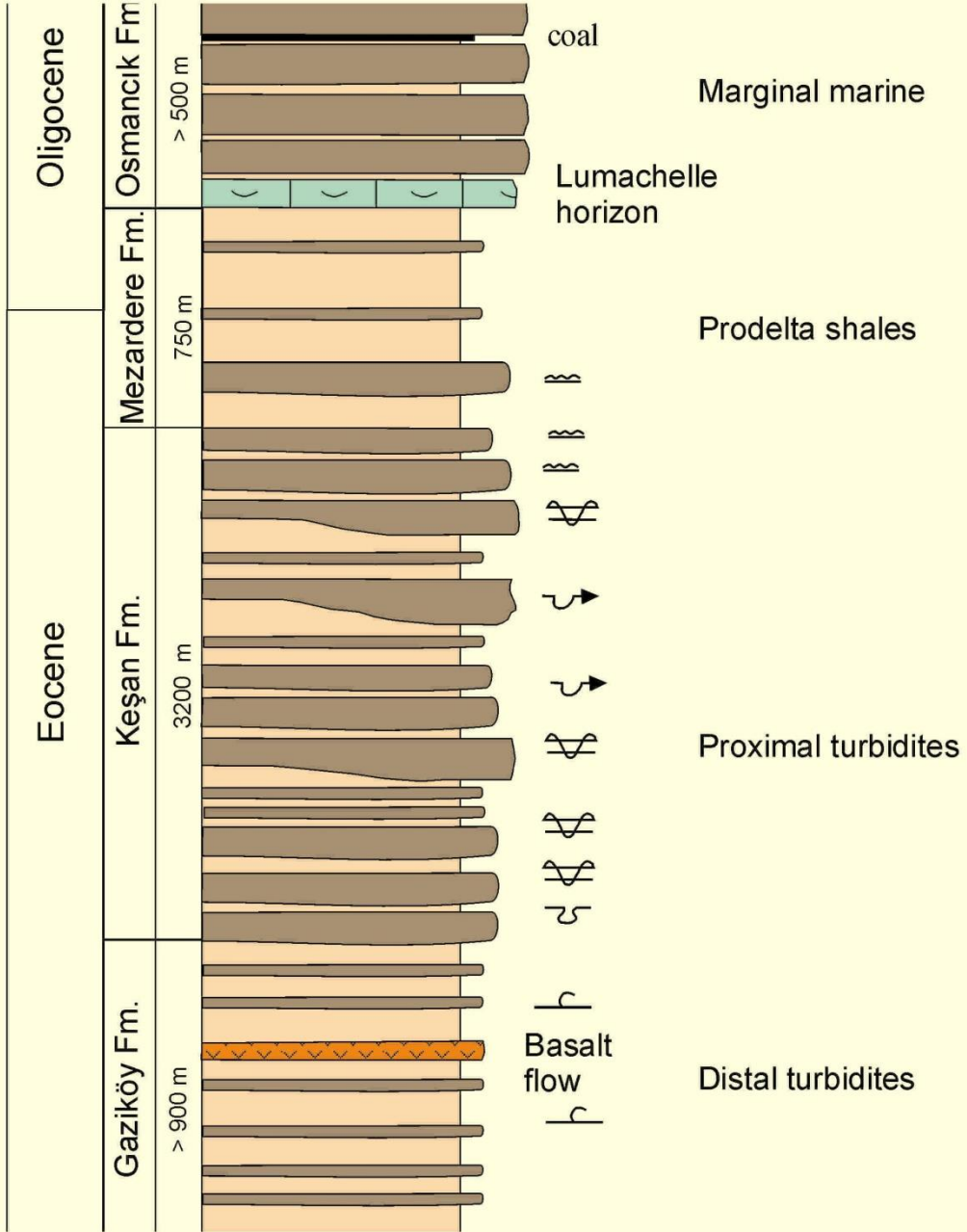


The stratigraphic sequence in the Ganos Mountains.





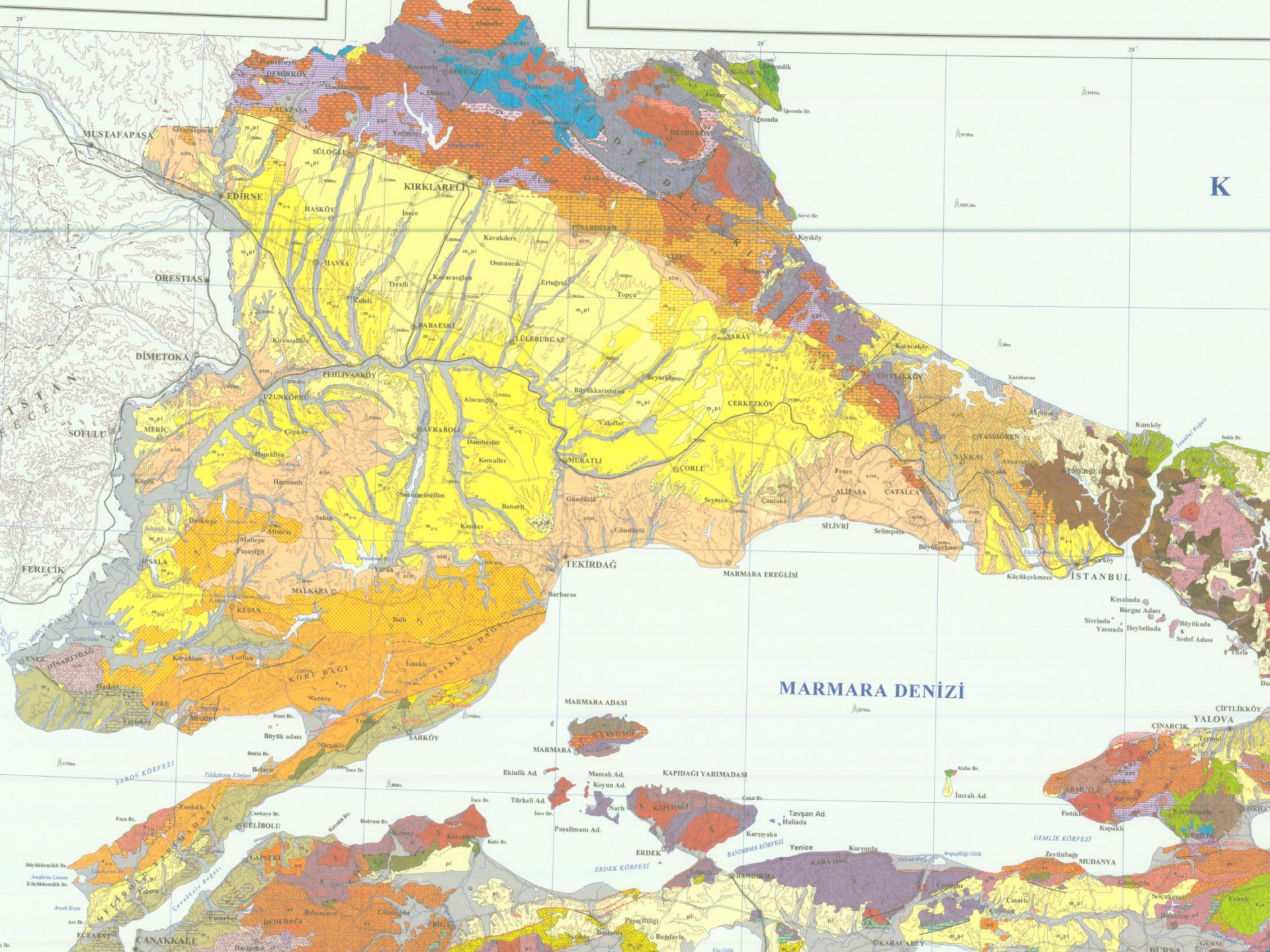


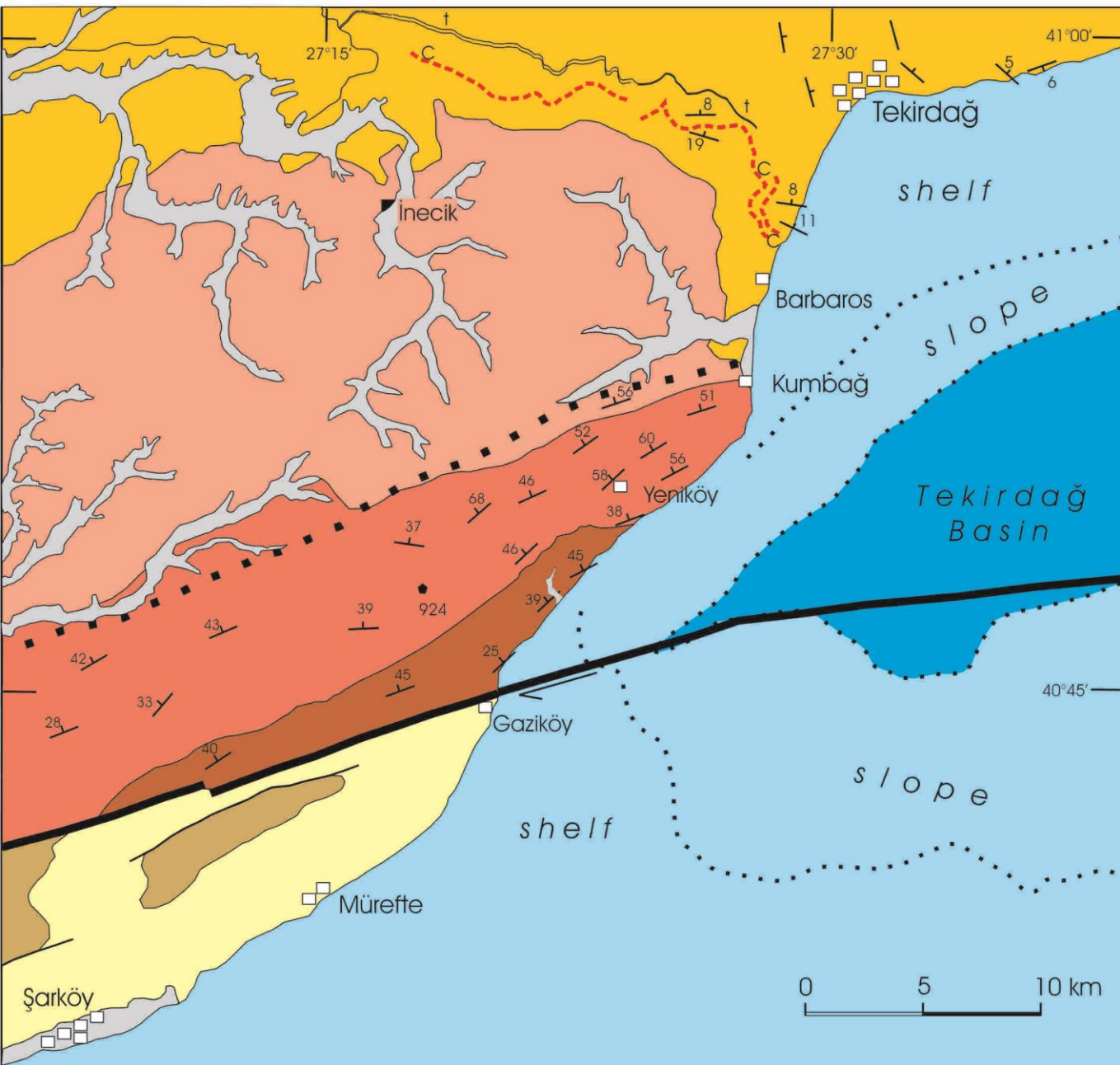


The stratigraphic sequence in the Ganos Mountains.

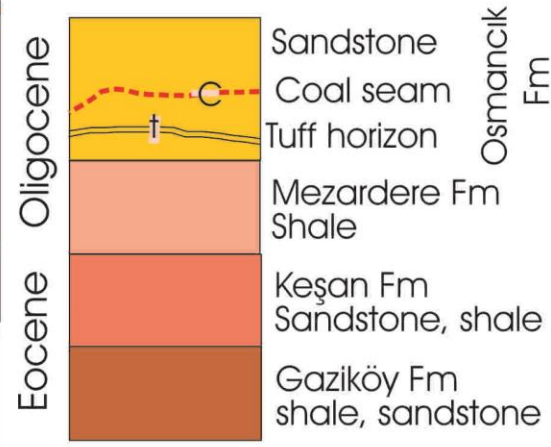








North of the Fault



South of the Fault

