



(a)

Number of Contours 232,
Number of Edges 2754



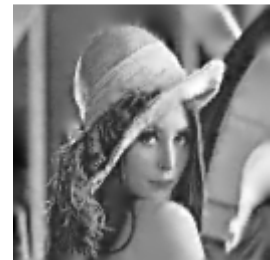
(b)

SNR = 63.47 dB



(c)

Number of Contours 165,
Number of Edges 2494



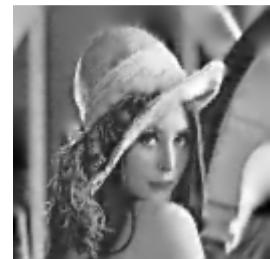
(d)

SNR = 57.89 dB



(e)

Number of Contours 110
Number of Edges 2199



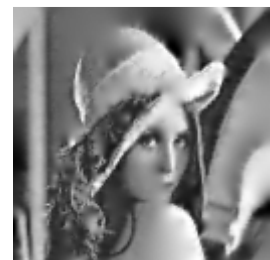
(f)

SNR = 56.88 dB



(g)

Number of Contours 56,
Number of Edges 1872



(h)

SNR = 35.40 dB

Figure 3.7 Reconstructed LENA Images