

Figure 5. Model file naming convention

Project Code, the first two-character field represents the *Discipline Designator*. The allowable characters for the first character in the Discipline Designator are listed in Table 3. The second character of the Discipline Designator field is always a hyphen “-”. The next two-character field represents the *Model File Type* (Table 4). The final four-character field is user-definable.

**Note:** *If the Workspace and Checker are being implemented, all eight of the mandatory characters in the model file name must be used and in the correct sequence. If all of the User Definable characters are not needed, placeholders must be used for the Workspace to function properly.*

**Example:** The model file name for a project at Engineer Research and Development Center (ERDC), Building 8000, 1<sup>st</sup> floor, Architectural Floor Plan could be:

ERDC8000A-FPF1XX.dgn/dwg

where ERDC8000 is the Project Code, A- is the Discipline Designator, FP is the Model File Type (Floor Plan), and F1 is a user-definable set of characters for Floor 1. Since all the user definable characters were not used, the characters XX were used as placeholders.

| Table 3<br>Discipline Designators |            |
|-----------------------------------|------------|
| Discipline                        | Designator |
| General                           | G          |
| Hazardous Materials               | H          |
| Survey/Mapping                    | V          |
| Geotechnical                      | B          |
| Civil Works                       | W          |
| Civil                             | C          |
| Landscape                         | L          |
| Structural                        | S          |
| Architectural                     | A          |
| Interiors                         | I          |
| Equipment                         | Q          |
| Fire Protection                   | F          |
| Plumbing                          | P          |
| Process                           | D          |
| Mechanical                        | M          |
| Electrical                        | E          |
| Telecommunications                | T          |
| Resource                          | R          |
| Other Disciplines                 | X          |
| Contractor/Shop Drawings          | Z          |
| Operations                        | O          |

**Existing/Demolition model file naming.** There are instances when a facility is being renovated and the as-built designs need to be revised to show demolition and new items.

| Table 4<br>Model File Types |      |                                      |
|-----------------------------|------|--------------------------------------|
| Discipline                  | Code | Definition                           |
| <i>General</i>              |      |                                      |
|                             | BS*  | Border Sheet                         |
|                             | KP*  | Keyplan                              |
| <i>Hazardous Materials</i>  |      |                                      |
|                             | DT   | Detail                               |
|                             | EL   | Elevation                            |
|                             | LG*  | Legend                               |
|                             | PP*  | Pollution Prevention Plan            |
|                             | SC   | Section                              |
|                             | XD*  | Existing/Demolition Plan             |
| <i>Survey/Mapping</i>       |      |                                      |
|                             | AL*  | Existing Airfield Lighting Plan      |
|                             | CP*  | Existing Communication Plan          |
|                             | EU*  | Existing Electrical Utilities Plan   |
|                             | FU*  | Existing Liquid Fuel Utilities Plan  |
|                             | HP*  | Hydrographic Survey Plan             |
|                             | HT*  | Existing HTCW Utilities Plan         |
|                             | IW*  | Existing Industrial Waste Water Plan |
|                             | LG*  | Legend                               |
|                             | NG*  | Existing Natural Gas Utilities Plan  |
|                             | PB*  | Project Boundary                     |
|                             | PR*  | Existing Profile                     |
|                             | SC   | Existing Section                     |
|                             | SP*  | Survey and Mapping Plan              |
|                             | SS*  | Existing Sanitary Sewer Plan         |
|                             | ST*  | Existing Storm Sewer Plan            |
|                             | WA*  | Existing Domestic Water Plan         |
| <i>Geotechnical</i>         |      |                                      |
|                             | BL*  | Boring Location Plan                 |
|                             | LB*  | Boring Log                           |
|                             | LG*  | Legend                               |
|                             | SH   | Schedule                             |
| <i>Civil</i>                |      |                                      |
|                             | AF*  | Airfield Plan                        |
|                             | AM*  | Airfield Pavement Marking Plan       |
|                             | CP*  | Channel Plan                         |
|                             | DT   | Detail                               |
|                             | EC*  | Erosion Control Plan                 |

| Table 4 (Continued)      |      |                              |
|--------------------------|------|------------------------------|
| Discipline               | Code | Definition                   |
| <i>Civil (Continued)</i> |      |                              |
|                          | EL   | Elevation                    |
|                          | FU*  | Liquid Fuel Utilities Plan   |
|                          | GP*  | Grading Plan                 |
|                          | IP*  | Installation Plan/Base Map   |
|                          | IW*  | Industrial Waste Water Plan  |
|                          | JP*  | Joint Layout Plan            |
|                          | KP*  | Staking Plan                 |
|                          | LG*  | Legend                       |
|                          | NG*  | Natural Gas Utilities Plan   |
|                          | PL*  | Project Location Map         |
|                          | PR*  | Profile                      |
|                          | SC   | Section                      |
|                          | SH   | Schedule                     |
|                          | SP   | Site Plan                    |
|                          | SS*  | Sanitary Sewer Plan          |
|                          | ST*  | Storm Sewer Plan             |
|                          | TS*  | Transportation Site Plan     |
|                          | WA*  | Domestic Water Plan          |
|                          | XD*  | Existing/Demolition Plan     |
| <i>Landscape</i>         |      |                              |
|                          | DT   | Detail                       |
|                          | EL   | Elevation                    |
|                          | IP*  | Irrigation Plan              |
|                          | LG*  | Legend                       |
|                          | LP*  | Landscape Plan               |
|                          | SC   | Section                      |
|                          | SH   | Schedule                     |
|                          | XD*  | Existing/Demolition Plan     |
| <i>Structural</i>        |      |                              |
|                          | 3D   | Isometric/3D                 |
|                          | CP*  | Column Plan                  |
|                          | DT   | Detail                       |
|                          | EL   | Elevation                    |
|                          | EP*  | Enlarged Plan                |
|                          | FP*  | Framing Plan                 |
|                          | LG*  | Legend                       |
|                          | NB*  | Non-Building Structures Plan |
|                          | NP*  | Foundation Plan              |

| Table 4 (Continued)           |      |                                  |
|-------------------------------|------|----------------------------------|
| Discipline                    | Code | Definition                       |
| <i>Structural (Continued)</i> |      |                                  |
|                               | SC   | Section                          |
|                               | SH   | Schedule                         |
|                               | XD*  | Existing/Demolition Plan         |
| <i>Architectural</i>          |      |                                  |
|                               | 3D   | Isometric/3D                     |
|                               | AC*  | Area Calculations/Occupancy Plan |
|                               | CP*  | Reflected Ceiling Plan           |
|                               | DT   | Detail                           |
|                               | EL   | Elevation                        |
|                               | EP*  | Enlarged Plan                    |
|                               | FP   | Floor Plan                       |
|                               | LG*  | Legend                           |
|                               | QP   | Equipment Plan                   |
|                               | RP*  | Roof Plan                        |
|                               | SC   | Section                          |
|                               | SH   | Schedule                         |
|                               | XD*  | Existing/Demolition Plan         |
| <i>Interiors</i>              |      |                                  |
|                               | 3D   | Isometric/3D                     |
|                               | DT   | Detail                           |
|                               | EL   | Elevation                        |
|                               | EP*  | Enlarged Plan                    |
|                               | LG*  | Legend                           |
|                               | QP   | Equipment Plan                   |
|                               | RP*  | Furniture Plan                   |
|                               | SC   | Section                          |
|                               | SH   | Schedule                         |
|                               | SP*  | Signage Placement Plan           |
|                               | WP*  | System/Prewired Workstation Plan |
|                               | XD*  | Existing/Demolition Plan         |
| <i>Fire Protection</i>        |      |                                  |
|                               | DG   | Diagram                          |
|                               | DT   | Detail                           |
|                               | FA*  | Fire Alarm/Detection Plan        |
|                               | FP*  | Fire Suppression Plan            |
|                               | LG*  | Legend                           |

| Table 4 (Continued) |      |                                     |
|---------------------|------|-------------------------------------|
| Discipline          | Code | Definition                          |
|                     | LP*  | Life Safety Plan                    |
|                     | SH   | Schedule                            |
|                     | XD*  | Existing/Demolition Plan            |
| <i>Plumbing</i>     |      |                                     |
|                     | DG   | Diagram                             |
|                     | DT   | Detail                              |
|                     | EL   | Elevation                           |
|                     | EP*  | Enlarged Plan                       |
|                     | LG*  | Legend                              |
|                     | PP*  | Piping Plan                         |
|                     | SH   | Schedule                            |
|                     | XD*  | Existing/Demolition Plan            |
| <i>Mechanical</i>   |      |                                     |
|                     | 3D   | Isometric/3D                        |
|                     | DG   | Diagram                             |
|                     | DT   | Detail                              |
|                     | EL   | Elevation                           |
|                     | EP*  | Enlarged Plan                       |
|                     | HP*  | HVAC Plan                           |
|                     | HT*  | HTCW Utilities Plan                 |
|                     | LG*  | Legend                              |
|                     | MD*  | Machine Design Plan                 |
|                     | MH*  | Material Handling Plan              |
|                     | PP*  | Piping Plan                         |
|                     | QP   | Equipment Plan                      |
|                     | SC   | Section                             |
|                     | SH   | Schedule                            |
|                     | SP*  | Specialty Piping Plan               |
|                     | XD*  | Existing/Demolition Plan            |
| <i>Electrical</i>   |      |                                     |
|                     | AL*  | Airfield Lighting Plan              |
|                     | AP*  | Auxiliary Power Plan                |
|                     | CP*  | Exterior Communication Systems Plan |
|                     | DG   | Diagram                             |
|                     | DT   | Detail                              |
|                     | EU*  | Electrical Utilities Plan           |
|                     | GP*  | Grounding System Plan               |
|                     | LG*  | Legend                              |

| Table 4 (Concluded)           |      |                          |
|-------------------------------|------|--------------------------|
| Discipline                    | Code | Definition               |
| <i>Electrical (Continued)</i> |      |                          |
|                               | LP*  | Lighting Plan            |
|                               | PP*  | Power Plan               |
|                               | SH   | Schedule                 |
|                               | SS*  | Special Systems Plan     |
|                               | XD*  | Existing/Demolition Plan |
| <i>Telecommunications</i>     |      |                          |
|                               | DG   | Diagram                  |
|                               | DT   | Detail                   |
|                               | LG*  | Legend                   |
|                               | SH   | Schedule                 |
|                               | TP*  | Telephone/Data Plan      |
|                               | XD*  | Existing/Demolition Plan |
| * = Not in NCS 2.0            |      |                          |

These revisions would not be made on existing as-built model files, but on copies to ensure the original as-builts are not modified.

A new model file type, Existing/Demolition (XD\*, where \* means this type is not in NCS 2.0), has been added to the standard to allow users to make revisions to as-built files. This model file type is used to aid users in separating existing to remain items from items that will be demolished (for more information on the demolition levels/layers, see Chapter 4, “Demolition levels/layers”).

**Example:** An Architect has an existing as-built Floor Plan model file for Building 1000, 2<sup>nd</sup> floor. For the current project, walls will be demolished and new walls constructed on the 2<sup>nd</sup> floor. First, a copy would be made of the original as-built file (B1000A-FPF2XX.dgn/dwg), which would be renamed to B1000RENA-XDF2XX.dgn/dwg (B1000REN is the Project Code, A- is the Discipline Designator, XD is the Model File Type (Existing/Demolition), and F2XX are user definable characters (F2=Floor 2)). The architect would open this file and move all demolition items to the first demolition

level/layer at that level/layer's correct symbology (if phased demolition is involved, the other levels/layers would be used). When the new items are drawn, the architect would open a new model file called something like

B1000RENA-FPF2XX.dgn/dwg

(B1000REN is the Project Code, A- is the Discipline Designator, FP is the Model File Type (Floor Plan), and F2XX are user definable characters (F2=Floor 2)). The file

B1000RENA-XDF2XX.dgn/dwg

would be referenced in with the Demolition levels/layers turned off. The architect would then use the Floor Plan active levels/layers to construct the new items for that project.

### Sheet file naming convention

The sheet file naming convention (Figure 6) has one optional field, followed by four mandatory fields. Similar to the format for model file naming, the first field is optional, while the remaining fields must be used and in the correct sequence.

The first field is entirely optional and can be used for a 0 to 20-character *Project Code* (see "Model File naming convention"). The next two characters are the *Discipline Designator with Level 2 Designator* (see Table 5). The next character is the *Sheet Type Designator* (see Table 6) followed by a two-character *Sheet Sequence Number* (01-99). The remaining three characters are user-definable.

**Table 5  
Discipline Designators with Level 2 Designators**

| Discipline                 | Designator | Description             | Content   |
|----------------------------|------------|-------------------------|---|
| <b>General</b>             |            |                         |   |
|                            | G-         | All General             | All or any portion of subjects in the following Level 2 Designators   |
|                            | GI         | General Informational   | Drawing index, code summary, symbol legend, orientation maps  |
|                            | GC         | General Contractual     | Phasing, schedules, contractor staging areas, fencing, haul routes, erosion control, temporary and special requirements             |
|                            | GR         | General Resource        | Photographs, soil borings   |
| <b>Hazardous Materials</b> |            |                         |   |
|                            | H-         | All Hazardous Materials | All or any portion of subjects in the following Level 2 Designators   |
|                            | HA         | Asbestos                | Asbestos abatement, identification, or containment  |
|                            | HC         | Chemicals               | Toxic chemicals handling, removal or storage  |
|                            | HL         | Lead                    | Lead piping or paint removal  |
|                            | HP         | PCB                     | PCB containment and removal   |
|                            | HR         | Refrigerants            | Ozone depleting refrigerants  |
| <b>Survey/Mapping</b>      |            |                         |   |
|                            | V-         | All Survey/Mapping      | All or any portion of subjects in the following Level 2 Designators   |
|                            | VA         | Aerial Survey           |   |
|                            | VF         | Field Survey            |   |
|                            | VH*        | Hydrographic Survey     |   |
|                            | VI         | Digital Survey          |   |
|                            | VU         | Combined Utilities      |   |
| <b>Geotechnical</b>        |            |                         |   |
|                            | B-         | All Geotechnical        |   |
| <b>Civil Works</b>         |            |                         |   |
|                            | W-         | All Civil Works         |   |
| <b>Civil</b>               |            |                         |   |
|                            | C-         | All Civil               | All or any portion of subjects in the following Level 2 Designators   |
|                            | CD         | Civil Demolition        | Structure removal and site clearing   |
|                            | CS         | Civil Site              | Plats, dimension control  |
|                            | CG         | Civil Grading           | Excavation, grading , drainage, erosion control   |
|                            | CP         | Civil Paving            | Roads, driveways, parking lots  |
|                            | CI         | Civil Improvements      | Pavers, flagstone, exterior tile, furnishings, retaining walls, and water features  |
|                            | CT         | Civil Transportation    | Waterways, wharves, docks, trams, railways, airfields, and people movers  |
|                            | CU         | Civil Utilities         | Water, sanitary sewer, storm sewer, power, communications, fiber optic, telephone, cable television, natural gas, and steam systems |

**Table 5 (Continued)**

| <b>Discipline</b>    | <b>Designator</b> | <b>Description</b>       | <b>Content</b>  |
|----------------------|-------------------|--------------------------|---|
| <b>Landscape</b>     |                   |                          |   |
|                      | L-                | All Landscape            | All or any portion of subjects in the following Level 2 Designators |
|                      | LD                | Landscape Demolition     | Protection and removal of existing landscaping                      |
|                      | LI                | Landscape Irrigation     |   |
|                      | LP                | Landscape Planting       |   |
| <b>Structural</b>    |                   |                          |   |
|                      | S-                | All Structural           | All or any portion of subjects in the following Level 2 Designators |
|                      | SD                | Structural Demolition    | Protection and removal  |
|                      | SS                | Structural Site          |   |
|                      | SB                | Structural Substructure  | Foundations, piers, slabs, and retaining walls                      |
|                      | SF                | Structural Framing       | Floors and roofs  |
| <b>Architectural</b> |                   |                          |   |
|                      | A-                | All Architectural        | All or any portion of subjects in the following Level 2 Designators |
|                      | AD                | Architectural Demolition | Protection and removal  |
|                      | AS                | Architectural Site       |   |
|                      | AE                | Architectural Elements   | General architectural   |
|                      | AI                | Architectural Interiors  |   |
|                      | AF                | Architectural Finishes   |   |
|                      | AG                | Architectural Graphics   |   |
| <b>Interiors</b>     |                   |                          |   |
|                      | I-                | All Interiors            | All or any portion of subjects in the following Level 2 Designators |
|                      | ID                | Interior Demolition      |   |
|                      | IN                | Interior Design          |   |
|                      | IF                | Interior Furnishings     |   |
|                      | IG                | Interior Graphics        | Murals and visuals  |
| <b>Equipment</b>     |                   |                          |   |
|                      | Q-                | All Equipment            | All or any portion of subjects in the following Level 2 Designators |
|                      | QA                | Athletic Equipment       | Gymnasium, exercise, aquatic, and recreational                      |
|                      | QB                | Bank Equipment           | Vaults, teller units, ATMs, drive-through                           |
|                      | QC                | Dry Cleaning Equipment   | Washers, dryers, ironing, and dry cleaning                          |
|                      | QD                | Detention Equipment      | Prisons and jails   |
|                      | QE                | Educational Equipment    | Chalkboards, library  |
|                      | QF                | Food Service Equipment   | Kitchen, bar, service, storage, and processing                      |
|                      | QH                | Hospital Equipment       | Medical, exam, and treatment  |
|                      | QL                | Laboratory Equipment     | Science labs, planetariums, observatories                           |
|                      | QM                | Maintenance Equipment    | Housekeeping, window washing, and vehicle servicing                 |
|                      | QP                | Parking Lot Equipment    | Gates, ticket, and card access                                      |

**Table 5 (Continued)**

| Discipline                   | Designator | Description                  | Content   |
|------------------------------|------------|------------------------------|---|
| <b>Equipment (Continued)</b> |            |                              |   |
|                              | QR         | Retail Equipment             | Display, vending, and cash register   |
|                              | QS         | Site Equipment               | Bicycle racks, benches, playgrounds   |
|                              | QT         | Theatrical Equipment         | Stage, movie, rigging systems   |
|                              | QV         | Video/Photographic Equipment | Television, darkroom, and studio  |
|                              | QY         | Security Equipment           | Access control and monitoring, surveillance   |
| <b>Fire Protection</b>       |            |                              |   |
|                              | F-         | All Fire Protection          | All or any portion of subjects in the following Level 2 Designators   |
|                              | FA         | Fire Detection and Alarm     |   |
|                              | FX         | Fire Suppression             | Fire extinguishing systems and equipment  |
| <b>Plumbing</b>              |            |                              |   |
|                              | P-         | All Plumbing                 | All or any portion of subjects in the following Level 2 Designators   |
|                              | PD         | Plumbing Demolition          | Protection, termination, and removal  |
|                              | PS         | Plumbing Site                | Extensions and connections to Civil Utilities   |
|                              | PP         | Plumbing Piping              | Piping, valves, and insulation  |
|                              | PQ         | Plumbing Equipment           | Pumps and tanks   |
| <b>Process</b>               |            |                              |   |
|                              | D-         | All Process                  | All or any portion of subjects in the following Level 2 Designators   |
|                              | DD         | Process Demolition           | Protection, termination, and removal  |
|                              | DS         | Process Site                 | Extension and connection to civil utilities   |
|                              | DL         | Process Liquids              | Liquid process systems  |
|                              | DG         | Process Gases                | Gaseous process systems   |
|                              | DP         | Process Piping               | Piping, valves, insulation, tanks pumps, etc.   |
|                              | DQ         | Process Equipment            | Systems and equipment for thermal, electrical, materials handling, assembly and manufacturing, nuclear, power generation, chemical, refrigeration, and industrial processes |
|                              | DE         | Process Electrical           | Electrical exclusively associated with a process and not the facility   |
|                              | DI         | Process Instrumentation      | Instrumentation, measurement, recorders, devices and controllers (electrical and mechanical)  |
| <b>Mechanical</b>            |            |                              |   |
|                              | M-         | All Mechanical               | All or any portion of subjects in the following Level 2 Designators   |
|                              | MD         | Mechanical Demolition        | Protection, termination, and removal  |
|                              | MS         | Mechanical Site              | Utility tunnels and piping between facilities   |
|                              | MH         | Mechanical HVAC              | Ductwork, air devices, and equipment  |
|                              | MP         | Mechanical Piping            | Chilled and heated water, steam   |
|                              | MI         | Mechanical Instrumentation   | Instrumentation and controls  |

| <b>Table 5 (Concluded)</b>      |                   |   |  |
|---------------------------------|-------------------|---|--|
| <b>Discipline</b>               | <b>Designator</b> | <b>Description</b>                        | <b>Content</b>   |
| <b>Electrical</b>               |                   |   |  |
|                                 | E-                | All Electrical                            | All or any portion of subjects in the following Level 2 Designators                    |
|                                 | EA*               | Electrical Airfield Lighting and Nav aids | Visual air navigation systems  |
|                                 | ED                | Electrical Demolition                     | Protection, termination, and removal   |
|                                 | ES                | Electrical Site                           | Exterior electrical systems (power, lighting, telecommunications, auxiliary)           |
|                                 | EP                | Electrical Interior Power                 | Interior power   |
|                                 | EL                | Electrical Interior Lighting              | Interior lighting  |
|                                 | EI                | Electrical Instrumentation                | Controls, relays, instrumentation, and measurement devices                             |
|                                 | ET                | Electrical Interior Telecommunications    | Interior telecommunications (telephone, network, voice and data cables)                |
|                                 | EY                | Electrical Interior Auxiliary Systems     | Interior auxiliary (alarms, nurse call, security, CCTV, PA, music, clock, and program) |
| <b>Telecommunications</b>       |                   |   |  |
|                                 | T-                | All Telecommunications                    | All or any portion of subjects in the following Level 2 Designators                    |
|                                 | TD*               | Telecommunications Demolition             | Protection, termination, and removal   |
|                                 | TN                | Data Networks                             | Network cabling and equipment  |
|                                 | TT                | Telephone                                 | Telephone systems, wiring, and equipment   |
| <b>Resource</b>                 |                   |   |  |
|                                 | R-                | All Resource                              | All or any portion of subjects in the following Level 2 Designators                    |
|                                 | RC                | Resource Civil                            | Surveyor's information and existing civil drawings                                     |
|                                 | RS                | Resource Structural                       | Existing facility structural drawings  |
|                                 | RA                | Resource Architectural                    | Existing facility architectural drawings   |
|                                 | RM                | Resource Mechanical                       | Existing facility mechanical drawings  |
|                                 | RE                | Resource Electrical                       | Existing facility electrical drawings  |
| <b>Other Disciplines</b>        | X                 |   |  |
| <b>Contractor/Shop Drawings</b> | Z                 |   |  |
| <b>Operations</b>               | O                 |   |  |
| <b>* = Not in NCS 2.0</b>       |                   |   |  |



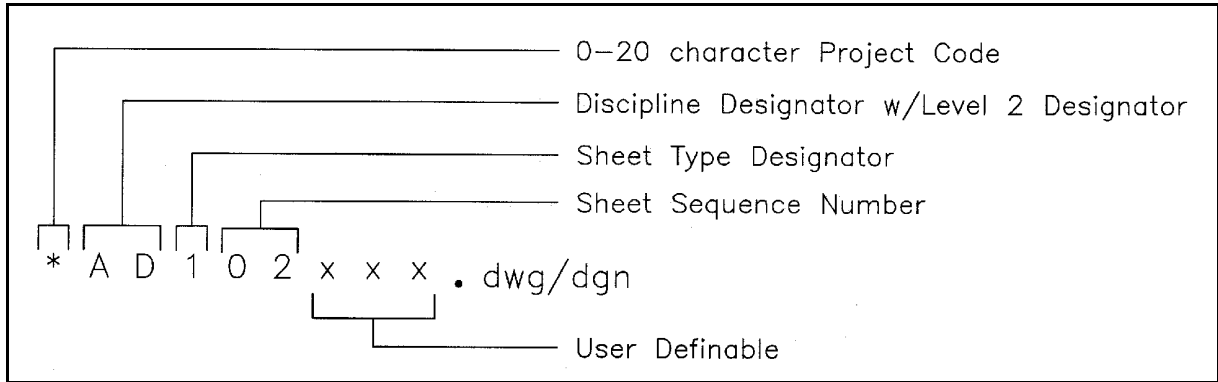


Figure 6. Sheet file naming convention

| Table 6<br>Sheet Type Designators                                       |            |
|---|------------|
| Sheet Type  | Designator |
| General (symbols legend, notes, etc.)                                   | 0          |
| Plans (horizontal views)  | 1          |
| Elevations (vertical views)   | 2          |
| Sections (sectional views)  | 3          |
| Large Scale Views (plans, elevations, or sections that are not details) | 4          |
| Details   | 5          |
| Schedules and Diagrams  | 6          |
| User Defined  | 7          |
| User Defined  | 8          |
| 3D Representations (isometrics, perspectives, photographs)              | 9          |

**Note:** If the sheet sequence number goes above 99 sheets for a particular discipline, the first character in the User Definable field could be used to expand the limit of sheets per discipline to 999. However, if more than 99 sheets are required for one discipline's drawings, the user might want to consider using the Level 2 Designator in the Discipline Designator to further subdivide the discipline (see Table 5).

**Note:** Occasionally, more than one Sheet Type (e.g., plan, elevation, detail) will be represented in one sheet file. If this is the case, the dominant sheet type determines the Sheet Type Designator.

**Example:** The sheet file name for a project at ERDC, Building 8000, 1<sup>st</sup> floor, Quadrant B, Architectural Floor Plan, sheet sequence 02 could be:

ERDC8000A-102F1B.dgn/dwg

where ERDC8000 is the Project Code, A- is the Discipline Designator, 1 is the Sheet Type Designator (Plan), 02 is the Sheet Sequence Number, and F1B is a user-definable set of characters for Floor 1, Quadrant B.

## Coordination Between Sheet File Name and Sheet Identifier

In assigning a sheet identifier (for use in the sheet identification block, reference bubbles, etc.), the user should coordinate with the name assigned to the electronic sheet file. The sheet identifier should consist of the discipline designator, sheet type designator, and the sheet sequence number (Figure 7).

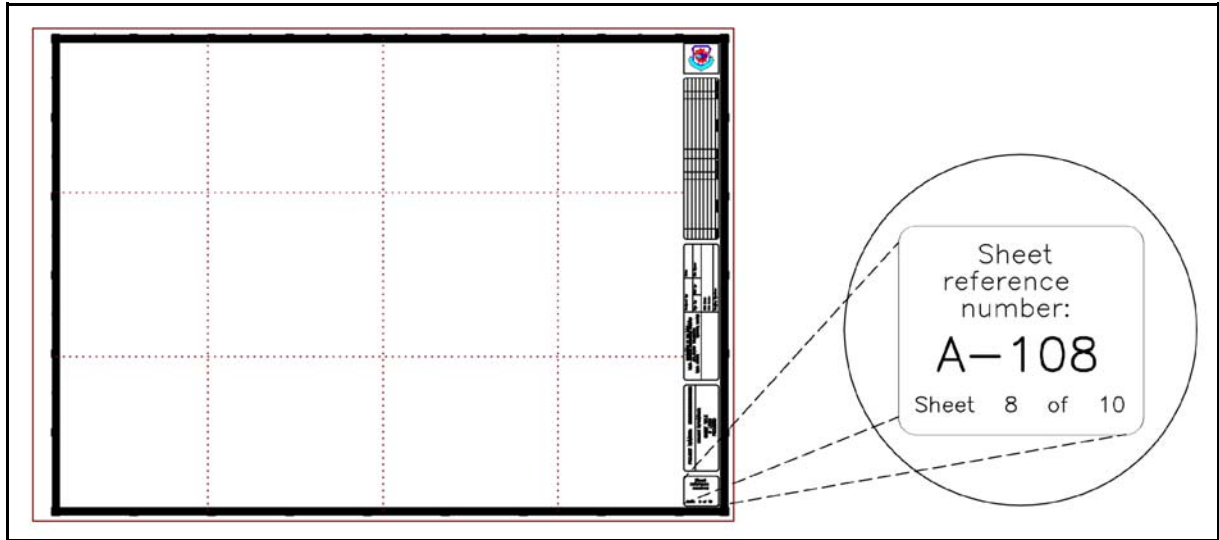


Figure 7. Typical border sheet title block with sheet identification block

As far as the sequence of the discipline designators in a drawing set, the National CAD Standard mandates that the disciplines follow the order as shown in Table 3.