

Article

The Development of a Holistic and Inclusive Model for Disaster Priority Regeneration Area (DPRA): The Case of Istanbul, Turkey

Ali Tunc ^{1,2,*}, Ezgi Sezgin ² and Tahsin Yomralioglu ²¹ Directorate of Urban Transformation, Istanbul Metropolitan Municipality, Istanbul 34146, Turkey² Department of Geomatics Engineering, Civil Engineering Faculty, Istanbul Technical University, Istanbul 34469, Turkey

* Correspondence: tuncali1@itu.edu.tr

Abstract: Urban regeneration can be defined as a multi-functional, specific zoning application for the improvement and sustainability of an urban area with its physical, environmental, social and economic conditions. The question of where the urban regeneration will take place constitutes the primary pillar of the applications. Considering the expected high-intensity earthquake in Istanbul, there is a significant number of risky regions in the earthquake zone that need to be regenerated. The important part of reducing damage in an earthquake disaster is improving the quality of the building stock. The identification, prioritization, analysis and visualization of disaster priority regeneration areas (DPRAs) is possible by creating a functional model based on a spatial basis. The main element in the scope of this study is to establish the processes related to the DPRAs and to determine the necessary criteria for the determination of these areas. Analyzing how much the existing DPRAs overlap with the areas suggested in this study and creating basis for the needed model in order to identify the undeclared areas, the destruction and losses that may be caused by the earthquake in the coming years can be prevented by the implementation of this sustainable and integrated urban regeneration model.

Keywords: urban regeneration; disaster priority response areas; zoning application; urban area; functional model



Citation: Tunc, A.; Sezgin, E.; Yomralioglu, T. The Development of a Holistic and Inclusive Model for Disaster Priority Regeneration Area (DPRA): The Case of Istanbul, Turkey. *Land* **2022**, *11*, 2150. <https://doi.org/10.3390/land1122150>

Academic Editor: Maria Rosa Trovato

Received: 14 October 2022

Accepted: 23 November 2022

Published: 29 November 2022

Publisher's Note: MDPI stays neutral with regard to jurisdictional claims in published maps and institutional affiliations.



Copyright: © 2022 by the authors. Licensee MDPI, Basel, Switzerland. This article is an open access article distributed under the terms and conditions of the Creative Commons Attribution (CC BY) license (<https://creativecommons.org/licenses/by/4.0/>).

1. Introduction

Starting from the appearance of ancient primitive settlements and continuing until the boom of modern cities and urban mega-regions, cities have increased in both number and size. Meanwhile, the functions of cities have increasingly become richer and more diverse [1]. However, the global urbanization process has not been uniform throughout time; cities in high-income countries, e.g., the United States and European countries, have finished rapid urbanization processes and reached high levels of urbanization [2]. Understanding the Western European globalized city evolution is a fundamental objective in the field of urban studies to interpret a situation marked by the advance of capitalism, occurring from the last three decades of the 20th century. This objective also takes into account its social, economic, and urban effects resulting from urban regeneration interventions [3]. However, regeneration has promoted a classist, unsustainable society lacking social cohesion. A specific issue worth highlighting is the fact that urban development patterns mostly implied the construction of the city on the ground of real estate mechanisms responding to the interests of capital to create new profit-driven spaces. An essential step in understanding the evolution of the capitalist city is therefore the dismantling, abandonment and ruin intended as real estate processes ended in regeneration, all of which aim to strengthen the city as a space for the upper class [4].

The urbanization process in Turkey began in the 1950s with the development of planning concepts and rapid increases in population from rural to urban. While the cities that faced rapid migration initially faced with the problems of squatting, in the course of time, the period of land arrangements started to be experienced in order to meet the needs of the cities. From the 1980s, the cities globally experienced a restructuring and regeneration process due to the economic restructuring and globalization [5]. Cities that are not ready for such a rapid population increase, especially megacities such as Istanbul, Ankara, and Izmir, have faced housing problems that resulted in slums and urban sprawl. Today, cities accommodate over 75% of the country's population and contribute substantially to its industrially competitive economy [6]. In the follow-up period, the urban regeneration period started. The various regeneration solutions produced for the increasing housing supply and the problem of illegal construction especially in big cities remained far from solving the problems of the period due to the inadequacy of the legal basis of the practices. Addressing the regeneration with temporary solutions has led to the continuous postponement of the regeneration problem in Turkey, which is under disaster risk, and the inability to determine the building stock that needs to be regenerated.

After the 1999 Marmara Earthquake, the Ministry of Environment and Urbanization stated that there are approximately 19 million building stocks in Turkey and that 35% of these buildings should be considered risky for life and property safety. Considering the population density, the Marmara Earthquake created a breaking point for the widespread problem of “slum” settlements in the peripheries of the city center in Istanbul due to reasons such as the lack of affordable housing and the lack of legal housing areas, and the views developed for these settlements within the framework of the urban arrangement approaches at that time. In addition to the reasons mentioned above, Istanbul, located on the North Anatolian fault line of Turkey (Figure 1), is easily seen as the city where the regeneration should be implemented most urgently and quickly due to the disaster risk.

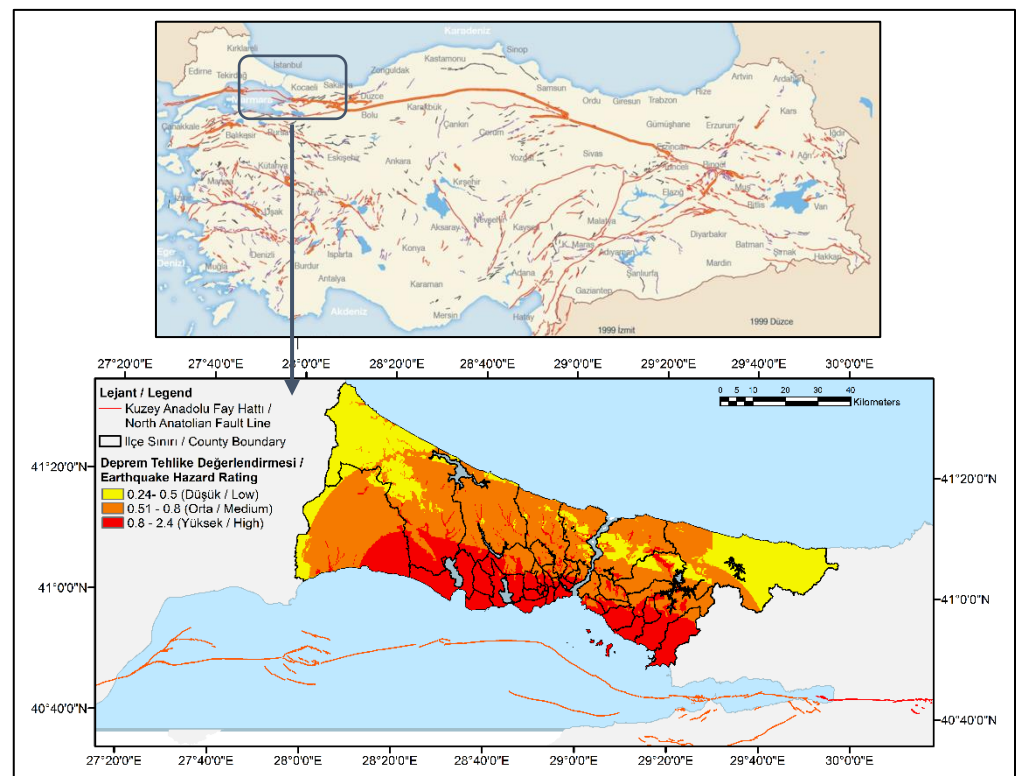


Figure 1. Istanbul Province North Anatolian Fault Line Earthquake Hazard Rating.

At this point, “A Disaster Prevention/Mitigation Basic Plan in Istanbul Including Microzonation in the Republic of Turkey” project was completed in 2002 with Istanbul

Metropolitan Municipality (IMM) and Japan International Cooperation Agency (JICA). According to this project, the vulnerability of buildings and infrastructures was examined on a neighborhood basis in order to identify areas with high risk of damage in a possible earthquake in Istanbul. This study aimed to determine the necessary measures to be taken in the short, medium and long terms as well as the development of new projects for the reduction of earthquake damages. With this project, which was prepared on the basis of four different scenario earthquakes, the amount of damage to all infrastructure and superstructures on a neighborhood basis was determined. According to two different scenarios in the report (projected for an earthquake with a magnitude of 7.5 and 7.7), possible loss and damage situation; according to the analysis made on approximately 750,000 buildings, 3,040,000 households and 9,000,000 population; 50,000 to 60,000 heavily damaged buildings, 500,000 to 600,000 homeless families, 70,000 to 90,000 dead, 120,000 to 130,000 seriously injured, 400,000 lightly injured, water leaks at 1000 to 2000 points, gas outlets in 30,000 natural gas cans, 3% of electrical cables ruptured, 50 million tons of debris, around USD 40 billion financial loss, rescue operations for 1,000,000 people, 330,000 tents will be needed [7]. Following this report, the Istanbul Earthquake Master Plan (2003) was prepared by the IMM Planning and Zoning Department/Soil and Earthquake Investigation Directorate and associate groups [8]. This plan was presented as an action plan expressing the process to be managed by bringing new planning and regeneration concepts to the agenda for Istanbul. At this point, within the scope of the preparations for the “Urban Regeneration Master Plan”, two complementary studies, “Microzonation Studies (2009)” [9,10] and “Urban Geology Studies (2011)” [11], were carried out. At the same time, the draft of the urban regeneration law, the preparation of which was completed, was submitted to the relevant authorities. In 2012, Law No. 6306 on the ‘Regeneration of Areas under Disaster Risk’ was enacted [12]. The main objective of the law, which is described as the largest zoning movement initiated in Turkey, is to ensure that there is no loss of life and property as a result of any disaster and to regenerate cities into healthy and safe living environments.

Law No. 6306 constitutes the legal basis for regeneration practices for the prevention of disaster risk in Turkey. The implementation of the areas and structures under disaster risk will be carried out in stages. First, determinations will be made to reveal the risk. Secondly it will be ensured that the area or building parcel is ready for conversion. In the third stage, it will be restructured or strengthened in accordance with current needs and techniques. However, Law No. 6306, which is described as a comprehensive and detailed urban regeneration practice, has several aspects that are legally and technically criticized. With this legislation, it is necessary to implement the projects to form the infrastructure of urban life in a sustainable manner and to support the legislation and practices for effective urban regeneration with the functional model. As in other planning processes, urban regeneration processes need to be formed according to a spatial base. Problems arising from a lack of institutional structure in urban regeneration applications, problems arising from local governments, lack of personnel with sufficient knowledge on the subject, problems due to lack of legislation, lack of selection of areas in a healthy way, problems encountered in informative studies of projects, differences in implementation approach of consultant firms and financing problems constitutes the main problem definitions for the holistic applications. This suggests that a healthy regeneration cannot be achieved unless the five main factors that presented in Figure 2 are provided.

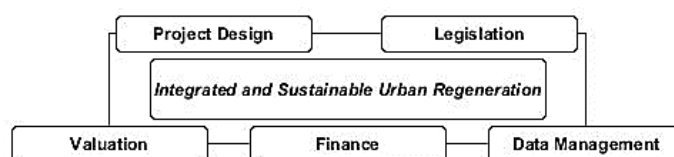


Figure 2. Components of Integrated and Sustainable Urban Regeneration.

In this study, risky area determination processes within the scope of Law No. 6306 were examined and revealed, and disaster risk areas announced by the Ministry were

mapped and evaluated. In order to determine the problem definitions that will emphasize the need for an urban regeneration model, which is aimed to be created with a holistic perspective different from the fragmented practices, the processes of urban regeneration within the scope of Law No. 6306 and the data produced/used in these processes were revealed. In the light of these data, the institution components, whose integration has gained importance according to the risky area criteria specified in the law, have been handled within the urban regeneration information system. The problem definitions for a geographic information system-based urban regeneration model that is aimed to be created are interpreted by mapping the criteria determined on the basis of the law numbered 6306. In line with the target, the criteria determined based on the law in the 'Disaster Priority Regeneration Area (DPRA)' in the Istanbul province have been made comprehensive by considering the district characteristics and pilot areas have been revealed by examining these criterias separately within the scope of the model. As a result of the study, it is aimed to create a holistic and sustainable model in determining the regeneration areas which will constitute the most important step of a geographic information system based urban regeneration model that will provide a basis for future applications. Thus, the importance of the model to be applied for the critical districts of Istanbul in the next phases of the study was emphasized with the data.

2. General Procedure and Key Concepts of the Study

Considering the planning dimension, the question of where to make urban regeneration is the first step of the regeneration. In Turkey, there is a significant number of risky regions in the earthquake zone which need to be regenerated. The current situation in the area to be determined is an issue that should be handled with precision in order to create the plan for the functional purpose. Considering the importance of this issue, first of all, it is necessary to decide on the function areas of the urban scale.

Areas that are at risk of loss of life and property, determined by the Ministry of Environment and Urbanization or Disaster Emergency Management Presidency and determined by the Council of Ministers upon the proposal of the Ministry, due to the ground structure or construction conditions, are defined as risky areas in the relevant law. In accordance with implementing Law No. 6306, the implementation of the Identification and Announcement of Regeneration Area step is set out in Figure 3. In the figure, in addition to the risky area announcement stages in the law, the documents required to be included in the file to be submitted to the Ministry for the risky area proposal are shown. These documents constitute the beginning of the roadmap within the scope of the law for the criteria to be determined for the areas to be determined for disaster-oriented regeneration.

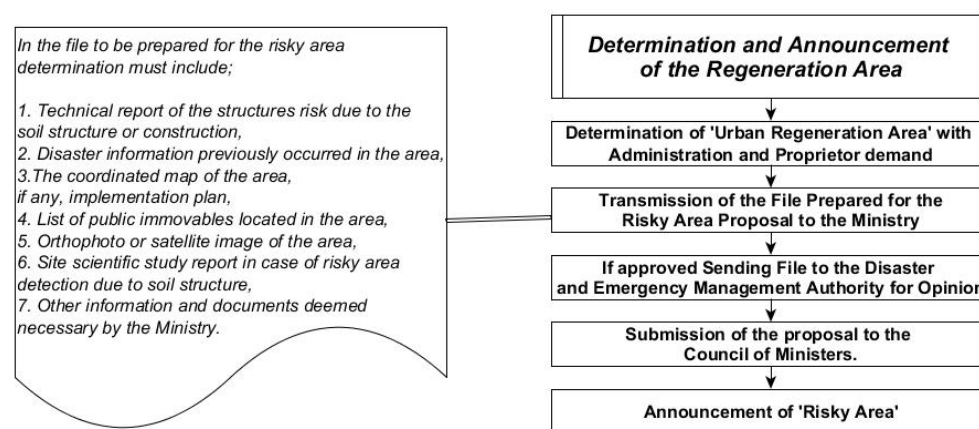


Figure 3. 'Identification and Announcement of Regeneration Area' Implementation Steps.

When the regeneration area is evaluated within the scope of ground structure; areas with earthquake risk, landslide areas, stream beds, flood areas, avalanches or areas where there is a possibility of falling rocks are identified as risky areas. In order for an area to be

of renovating more than 6.5 million houses in Turkey before a possible earthquake, the risky areas that have been projected since 2012 cannot be handled holistically without certain standards, and that it is far from realizing the target of preventing the disaster risk as intended in the law.

Within the scope of this study, a possible urban regeneration model with an automated site selection interface for ‘Disaster Priority Regeneration Area (DPRA)’ (risky areas) in Istanbul will provide a holistic and fast approach to the applications in the 1st degree earthquake zone. At this point, the right data and information is needed to make the right decision in the functional model intended for the study. In order to design the model, it is necessary to first determine the situation, design, develop and implement this plan, and the model should be sustainable. The most important component for functional model design is data management. The inputs and outputs that make up the model are clearly presented in Figure 5 within the framework of the main process steps of urban regeneration. The data groups that should be included in the urban regeneration model to be created will be dealt with in this way, and an existing status database will be created. The data used and generated at every step of the implementation stages play a key role in the creation of data layers that should be included in an urban regeneration information system including which institutions should generate these data and which institutions should be integrated with each other. This institutional integration will ensure the continuity of the implementation of healthier practices by working with a forward-looking, sustainable and dynamic data set by preventing the duplication of data used. Data acquisitions should be carried out from these institutions, and data sharing from the relevant data directorates should be carried out quickly. According to the ‘Turkey National Geographic Information System (TUCBS) Project’ document, this structure, which should be created by taking into account the basic principles for the geographical data sets to be used in the establishment and operation of the TUCBS, can be expanded with this vision and can form the basis for the creation of dynamic databases for different sectors.

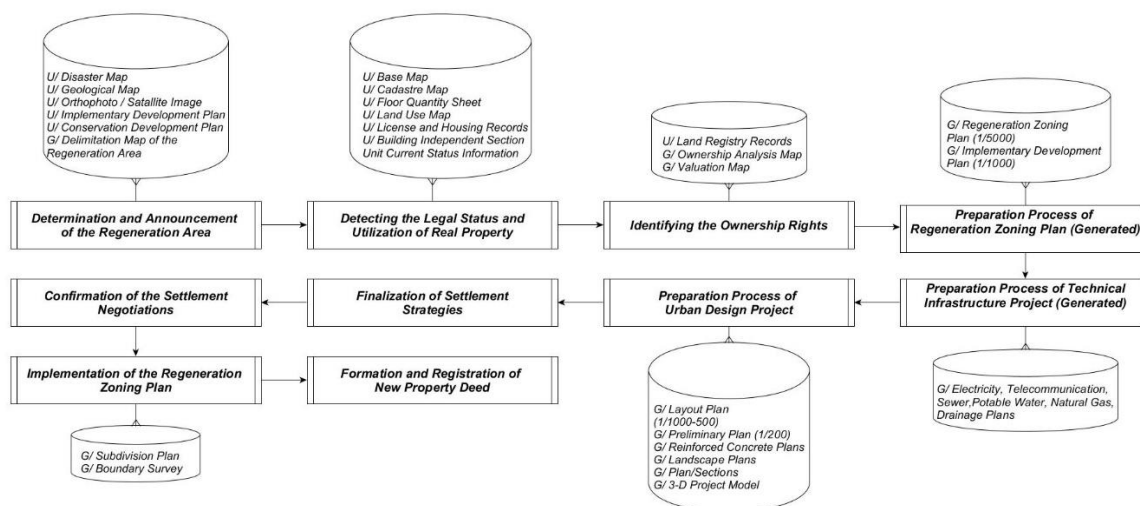


Figure 5. Spatial Data Infrastructure in Urban Regeneration Studies.

Even if the classification of the data module for the model to be designed is created by utilizing the urban regeneration spatial data infrastructure, it is clearly seen that different institutions and the data of these institutions should be integrated into the urban regeneration model being created. It is possible with GIS to ensure the data flow of national projects such as TAKBİS (Land Registry and Cadastre Information System), MERNİS (Central Population Administration System), MEĞSİS (Spatial Real Estate System), and MAKİS (Spatial Address Registration System) into the urban regeneration model (Figure 6), but the emerging element to manage the structure in this dimension is the standard. General Directorate of Geographic Information Systems was established in Turkey to ensure the

standard in data and information on the basis of TUCBS standards. Urban regeneration applications will be carried out in a faster, more efficient, sustainable and holistic way with a single database model that will be created as a result of data sharing and integration between institutions with the support of information systems.

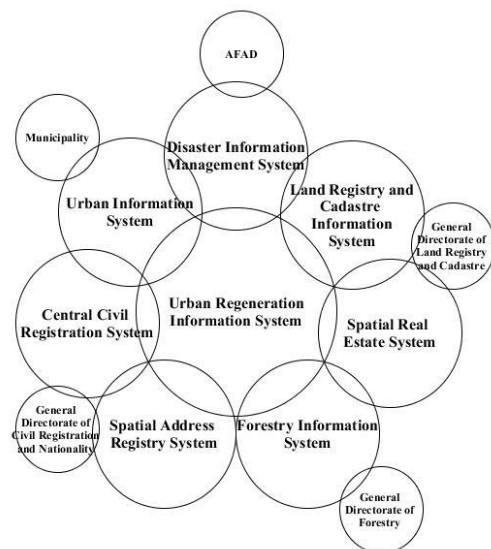


Figure 6. Urban Regeneration Database Integrated Components.

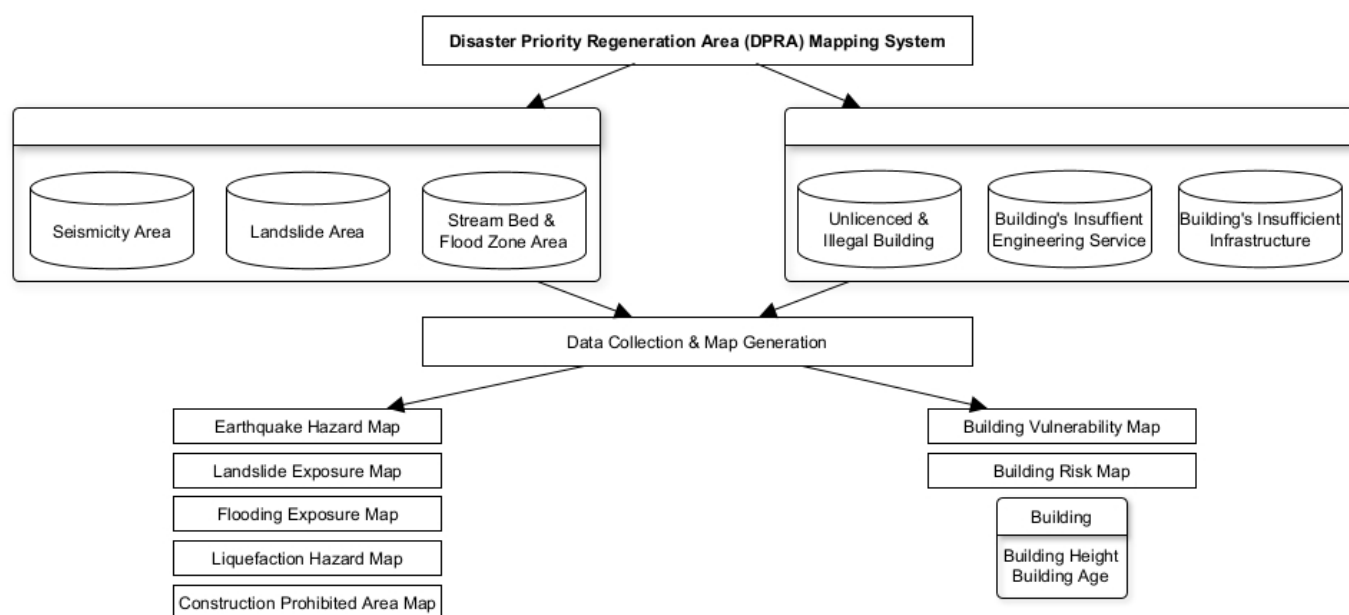
In the light of all the information explained and before determining the criteria for the risky area declaration in relation to urban regeneration within the scope of Law no. 6306, the relevant legislation is examined and the existing criteria are revealed in the light of the documents revealed in this context. In the light of all the data disclosed, it can be said that in order to determine the regeneration areas, it is necessary to create the data model to be used before the legislation-based criteria, and to create the data to be used in the model with the help of the integration of the produced institutions. Within the scope of the study, “Analytical Data Preparation Work That Will Form a Basis for the Plans to Be Prepared with an Urban Regeneration Perspective” was carried out for all 39 districts within IMM in accordance with Law 6306 and other relevant legislation by the IMM Urban Regeneration Directorate. As a result of this process, the Istanbul Urban Regeneration Master Plan (IKDMP) [13] was prepared. Most of the data sets used within the scope of this study were carried out with the data used in this project as of 2018.

3. Problem Statement and Methodology

As emphasized in the previous stages of the study, when the risky area is evaluated within the scope of the ground structure; seismicity, landslides, stream beds, flood zones, avalanche or rock fall areas should take into consideration according to the legislation. When evaluated within the scope of the construction on it; it is determined according to factors such as the detection of risky buildings, buildings that are constructed unlicensed and illegally, or buildings that did not receive engineering services during the project and implementation phase, and that the transportation network and infrastructure were insufficient as a result of the construction. Based on this definition in the law, maps based on these criteria (Table 1) for the province of Istanbul were evaluated within the scope of the study. At this point, the data produced and used by the institutions were examined in order to reveal the risky areas by examining this concept in the law. When the accessed and past studies are examined, the data set schema that can be followed in the determination of these areas by using the most qualified and up-to-date data are presented in Figure 7. At this point, disaster maps for ‘Ground Structure’ and building data layer for ‘Construction Status’ were examined, and data configuration was carried out within the scope of the model.

Table 1. Risky Area Determination Criteria In Accordance With Law No. 6306.

Risky Area Determination Criteria in Accordance with Law No. 6306	
Scope of Ground Structure	Scope of Construction
Seismicity Area Landslide Area Stream Bed & Flood Zone Area	Unlicensed and illegal Building Building's Insufficient Engineering Service Building's Insufficient Infrastructure

**Figure 7.** Data set Schema of DPRA Mapping System.

When the regeneration applications made all over the world are evaluated, geographical information systems and disaster management are of great importance within the scope of the determined regions when disaster risk is in question. Especially in earthquake-oriented disaster management, it is necessary to determine the vulnerability of the region, to update the data inventory, to handle it dynamically in a certain standard and to support the model with decision support systems. Generally, parameters such as the liquefaction potential of the ground, ground structure information, topographic maps of the region, surface geology information should be considered. At this point, the most important layer in the data inventory is the building layer; with the maps produced and the existing data, it is seen that it is independent of a standard, produced in different years and far from being up-to-date and not of sufficient quality. It should be emphasized before revealing the operation of the model that should be revealed in the focus of this study that a data standard for Istanbul should be determined first and it should have a qualified and dynamic structure. In addition, the determination of risky areas announced by the Ministry in the light of the examined data, in the light of the model proposed within the scope of the study and determined in the focus of the law, will ensure that the studies are integrated, sustainable and reliable. At this point, the data set schema that should be used to determine the disaster-focused areas to be considered within the scope of the study is presented in Figure 7.

As can be seen in the figure, the data that need to be considered and included in the model according to the ground structure and scope of construction according to Law No. 6306 are obvious. It is necessary to ensure the integration of the institutions where these data are produced and used up-to-date. Considering the ground structure data, the disaster classification data were examined by the relevant regulations and the regions where the ground structure that poses a high danger are not suitable for construction were determined within the scope of the study. At this point, it is obvious that these areas are

not suitable for on-site regeneration. After determining the areas that are not suitable for on-site regeneration, the criteria related to the ground structure and the construction status should be added to identify the risky areas. However, it is seen that the building data inventory is far from up-to-date and has unqualified attribute information. At this point, the building data are supported by building durability and vulnerability data based on earthquake scenarios produced in IKDMP studies. Necessary approaches and key points for a sustainable and healthy disaster-oriented urban regeneration model will only yield healthy results as a result of a regeneration model handled in this way.

This study is a human-oriented approach to the urbanization problem in Western countries, the capitalist reconstruction processes of the mega city of Istanbul under the possible earthquake hazard. It aims to develop a sustainable solution with ground and structure-oriented parameters in order to base the qualified zoning application approach to the regeneration processes. The understanding of the regeneration of this historical city by enriching the upper layer has been demolished and this model has been grounded for a solution and human-oriented regeneration. In the other phases of the study, the study will be concluded by expanding the methodology and evaluation parameters set forth throughout the province of Istanbul. In the literature, such a study has not been carried out throughout the province of Istanbul.

4. Results

The concept of disaster-oriented urban regeneration, which is the basis of the law, greatly increases the importance of the ground structure and the building layer in the data set in this focus of the criteria in the law as seen in the Figure 7. However, this key point raises doubts about the criteria by which the areas determined in the applications are determined. At this point, in order to understand whether the criteria obtained from the law are sufficient or to make the necessary additions to these criteria, it is necessary to reveal the problems experienced by evaluating the ongoing applications. In this part of the study, it is necessary to evaluate the criteria maps given in Table 1 and to determine which districts should be prioritized in a comprehensive and integrated urban regeneration application within the scope of these maps.

Within the scope of the study, the use of PGA (maximum ground acceleration) at the point of seismicity was determined as the most appropriate evaluation criterion in this regard. PGA is an important parameter for earthquake hazard assessments. Information about the PGA characteristic caused by the earthquake can be obtained from the records of past earthquake events. Ground acceleration records allow extracting key features such as peak ground velocity from ground motion records, ground acceleration and earthquake acceleration at the ground surface can be calculated. PGA values can be calculated using the attenuation function. The attenuation function is a function that represents the difference between the intensity of local ground motion (a), the magnitude of the earthquake (M), and the distance (r) between points at the source of the earthquake [14]. In the context of these parameters, AFAD Istanbul Disaster Hazard Maps, which were created on the basis of Boore and Atkinson's work in 2006 [15], were created using the maps created based on PGA in the 2002 Microzonation report of JICA in the context of geological parameters, and Istanbul Earthquake Hazard Map was created on Figure 8. According to Building Earthquake Regulation, which came into force on 1 January 2019 determined by the decision of the Council of Ministers, unlike the previous map, PGA values were shown instead of the earthquake zones, and the concept of "earthquake zone" was removed. The fourth, third, and second zones on the old map were grouped under one zone, while the former zone one PGA value of 0.33 g is now divided into three separate zones. Considering this situation, only the coastal areas of Bakırköy and Beylikdüzü districts on the European Side of Istanbul, and the coastal region of Tuzla on the Anatolian Side, which have PGA above 0.33 g, enter this dangerous border. For this reason, within the scope of the study, first of all, earthquake risk zones were taken into consideration over the previously determined value classes for the province of Istanbul, and it was determined that the zoning of the

classification values determined as 0.1 g–0.2 g–0.3 g–0.4 g. According to these earthquake zones was insufficient for the province of Istanbul within the scope of the study. For this reason, as seen in Figure 6, PGA values of Istanbul province are divided into 8 classes. On the European Side; Büyükçekmece, Esenyurt, Beylikdüzü, Avcılar, Küçükçekmece, Bağcılar, Bahçelievler, Güngören, Bakırköy, Zeytinburnu and Fatih districts; on the Anatolian side, Tuzla, Sultanbeyli, Kartal, Maltepe and Ataşehir districts are located in high earthquake risk areas. Accordingly, considering the regions declared as risky areas by the decision of the Council of Ministers, the areas with PGA value between 0.2 g and 0.45 g are considered in areas with high earthquake risk such as Bağcılar, Küçükçekmece, Zeytinburnu, Kartal, Pendik, Esenler, Tuzla, and Güngören. But, rest of the risky areas such as Kağıthane, Beşiktaş, Üsküdar, Beyoğlu, Kadıköy, Sarıyer, Beykoz, Şişli with high land values causes the purpose of disaster-priority urban regeneration to be questioned. Considering the project situations, PGA value of the areas that are finished or ongoing from these areas is 0.2; 14 of these 27 areas have a PGA value of less than 0.2 g. The average PGA of the newly started projects is 0.19; 4 of these 6 areas have a PGA value of less than 0.2. Finally, the average PGA value of the projects that have not started yet was determined as 0.19; 20 of these 39 areas had a mean PGA of 0.2. However, before making this comment, other criteria should be evaluated, especially within the scope of ground structures.

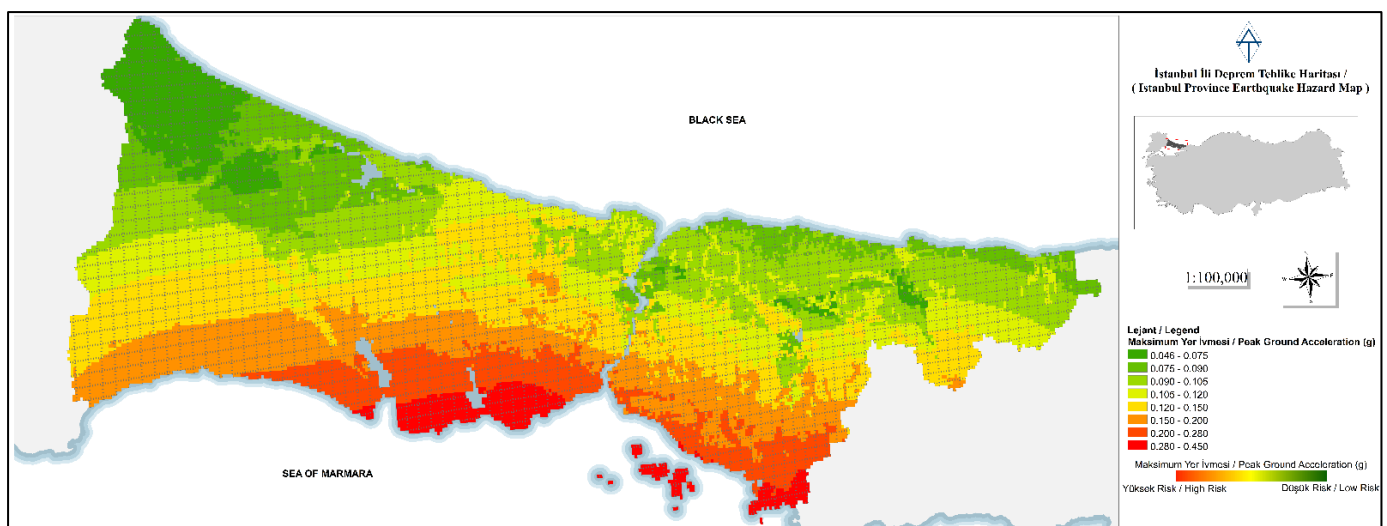


Figure 8. Istanbul Province Earthquake Hazard Map (Boore & Atkinson 2008).

Another criterion to be evaluated within the scope of ground structure is the landslide areas of Istanbul province. The risk categories used by the General Directorate of Mineral Research and Exploration (MTA) for Landslide Maps, the production of Urban Regeneration Landslide Exposure Map for the city of Istanbul and the landslide hazard level included in the Landslide Maps created by the IMM within the scope of the Microzonation study for the city of Istanbul. As seen in Figure 9, when the risky areas announced by the Ministry within the scope of the map produced and the areas included in the active landslide risk category used by the MTA and the high-level risk areas from the landslide hazard areas classified by the IMM are intersected, all the announced risky areas are found in the medium danger areas in Bağcılar district. It has been determined that the intersections in Bayrampaşa, Esenler, Küçükçekmece, Zeytinburnu and Güngören districts are located in low-grade danger areas, apart from the risky areas in Güneşli and Evren neighborhoods located in these districts. It is obvious that the areas determined at this point were determined without considering the landslide danger.

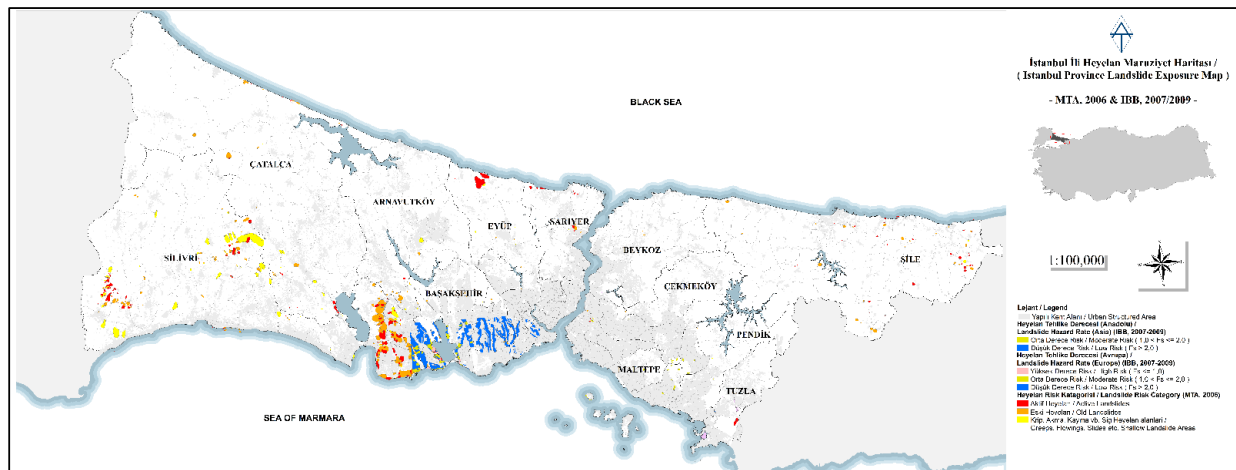


Figure 9. Istanbul Province Landslide Exposure Map (MTA, 2006 & IMM, 2007/2009).

Considering that the active landslide zones describe the mass that is still in motion, as a result of analyzes carried out within the scope of the study, it has been determined that there are 6657 structures in the active landslide areas of the MTA and the high-risk landslide areas of the IMM. Especially in the districts of Büyükçekmece, Beylikdüzü, Esenyurt and Avcılar, in the regions where these areas are located, the announcements of the areas to be converted based on the landslide exposure of the danger areas, which are in the form of building clusters, should mostly be addressed. Within the scope of the study, two pilot areas were determined, as can be seen in Figure 10, which can only be declared as landslide risk focused.

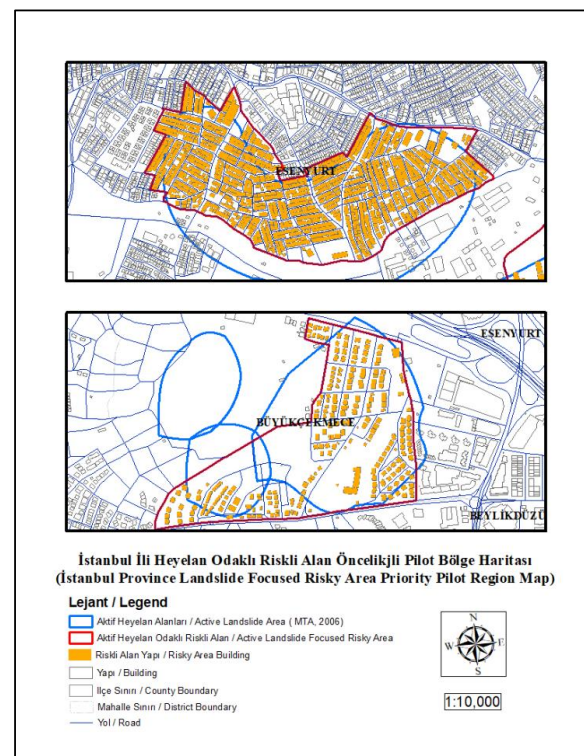


Figure 10. Istanbul Province Landslide Focused Risky Area Priority Pilot Region Map.

Since these pilot areas created for Büyükçekmece and Esenyurt districts are located in active landslide zones, there are 1850 buildings in these areas, which are recommended not to be subject to on-site regeneration. It is obvious that an urgent regeneration to be

realized in these regions should be prioritized due to the number of buildings mentioned. Considering these assessments, these high-risk areas are classified as areas where construction is prohibited in high-scale plans. At this point, the landslide criterion should be considered not only for an urban regeneration model that will be handled with a disaster focus, but also for the province of Istanbul in order to evaluate whether the regeneration will be carried out on-site. The necessity of including the regeneration method in the model design to be created within the scope of the study is of great importance for a sustainable and future-oriented urban regeneration.

Another criterion in the law to be evaluated within the scope of ground structure is flood areas as seen in Figure 11. Within the scope of the Flooding Exposure Map, which was produced by evaluating the flood risk areas and water basin protection area maps produced by the General Directorate of State Hydraulic Works (DSI) and the Istanbul Water and Sewerage Administration (ISKI), 18 areas from the risky areas announced by the Ministry intersect with these areas. There are a total of 1044 buildings in these areas. However, the number of buildings remaining in the primary protection zone of the watershed is 19,123. 8713 buildings in flood risky areas revealed by DSI, 40,370 buildings in flood risky areas classified according to 100 and 500-year flood flows revealed by ISKI, and 500 in 100-year flood flow rates. There are 16,308 buildings in the areas determined according to the annual flood flow. The fact that only 1044 buildings are located in the declared risky areas, out of 64,429 buildings (Figure 11) in total, reveals that practices outside the purpose of disaster-oriented regeneration are carried out in areas to be realized in critical protection areas and where on-site regeneration should not be performed. At this point, within the scope of the study, considering the building blocks in the flood areas, 2 pilot regions within Bahçelievler and Güngören districts with priority to be announced were determined and the region boundaries are shown in Figure 12 as an additional mapping. The presence of 1102 buildings only in these 2 regions shows that a healthier path can be followed for this criterion when compared with the areas announced so far. It is of great importance that the regions to be announced in these regions are also subject to the transformation as a priority, in order to prevent future consequences.

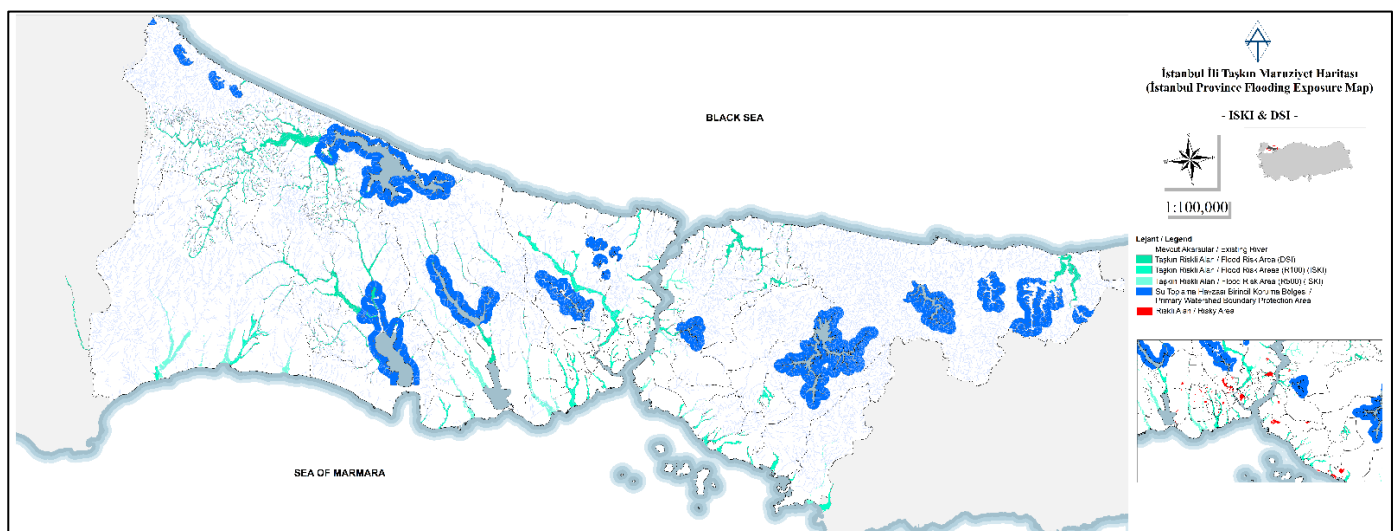


Figure 11. Istanbul Province Flooding Exposure Map (DSI & ISKI).

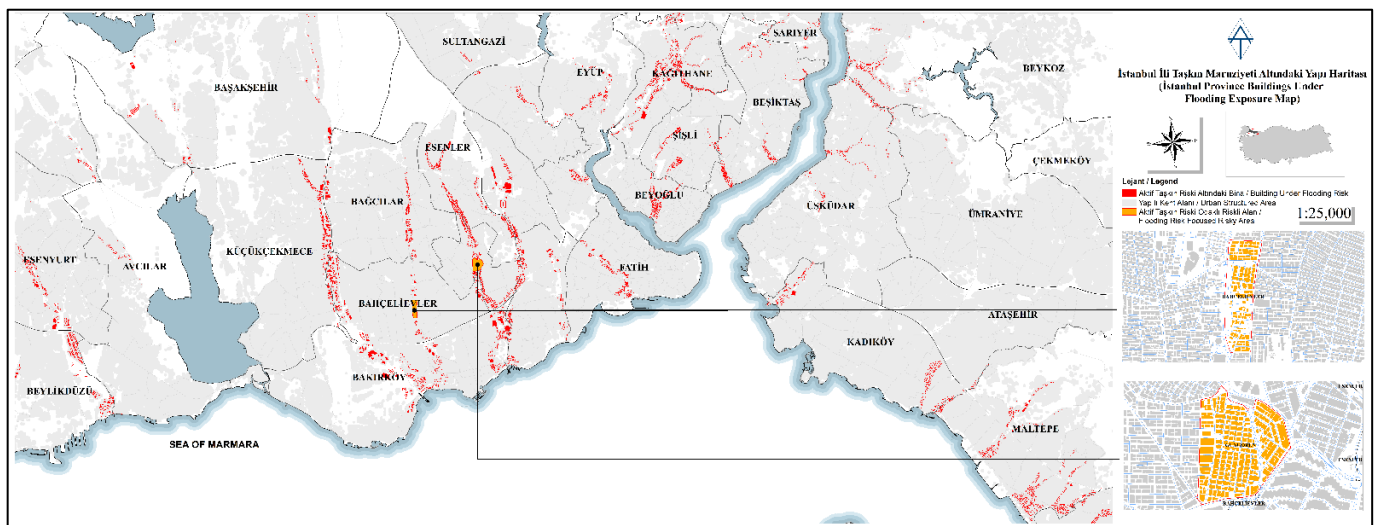


Figure 12. Istanbul Province Buildings under Flooding Risk Map.

In the light of the data presented at this point, when the disaster-oriented criteria in the Law in terms of ground structure are evaluated, it is seen that the areas that are not suitable for on-site regeneration and that are under high disaster risk are not given priority in regeneration. Considering the building structure in these areas and the population living in these structures, it is suggested in the first stage of the targeted model that the regeneration should be carried out immediately in the proposed areas in the light of these data in a disaster-oriented urban regeneration model and that these areas should be handled as a priority.

The risk of soil liquefaction needs to be assessed before producing the final mapping of the ground condition. In general, soil liquefaction can be defined as the sudden decrease in the shear strength of the soil due to excessive pore water pressure generation in the soil during load application. As a result of the liquefaction of the ground, the structure may tend to sink into the ground or, in light structures, move upwards and float. In soils that lose their shear strength by liquefying, small shear stresses that change direction cause large deformations and soil collapse damages in structures. The liquefaction risk map (Figure 13) created within the scope of the study has been revealed.

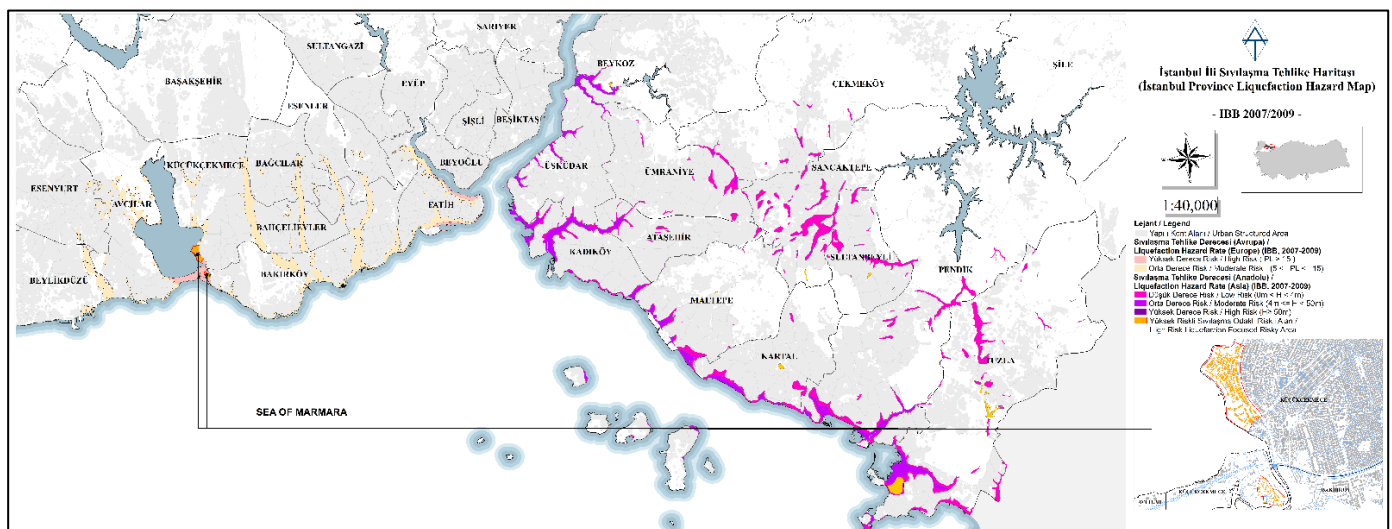


Figure 13. Istanbul Province Liquefaction Risk Map (IMM, 2007/2009).

In the map created based on the classifications revealed by the IMM between 2007 and 2008, the current number of buildings in areas with liquefaction risk on the European Side is 27,051, while the number of buildings remaining in high-risk liquefaction areas is 1578. While the same rate is 27,661 on the Anatolian Side, the building rate is determined to be quite low. Among the risky areas declared by the Ministry so far, only the risky area located in Küçükçekmece Fatih neighborhood is among these risk areas. Considering the building blocks in high-risk liquefaction areas, recommendations for pilot disaster priority risky areas are presented in Figure 13 as additional map.

At this point, the sub-classes belonging to the 'areas with a construction ban' created in the light of the data in the 1:5000 scale Master Development Plan are given in Table 2. The 'Istanbul Province Construction Prohibited Area Map' created according to these sub-classes is presented in Figure 14. These areas were created for each of the subclasses given in the table, were included in the study by foreseeing a more comprehensive study according to other criteria, and were revealed by highlighting the building stock within the areas requiring geological survey. In the light of these data, there are 95,590 buildings in all prohibited areas, and there are 12,347 buildings in 262 geologically undesirable areas in Istanbul.

Table 2. Construction Prohibited Area Subclasses.

Military and Strategic Conservation Area
Railway Conservation Area
Power Transmission Line Conservation Area
Airport and Flight Strip Conservation Area
Geological, Topographical, Biometeorological Conservation Area
Highway Roadside Conservation Area
Strict Preservation Zone Conservation Area
Nuclear Energy Generation Conservation Area
Disaster Area Protection Zone with Repair and Excavation Conservation Area
Aqueducts Conservation Area
Supporting and Conductive Tubes Conservation Area
Flooding Zone Conservation Area
Construction Prohibited Area

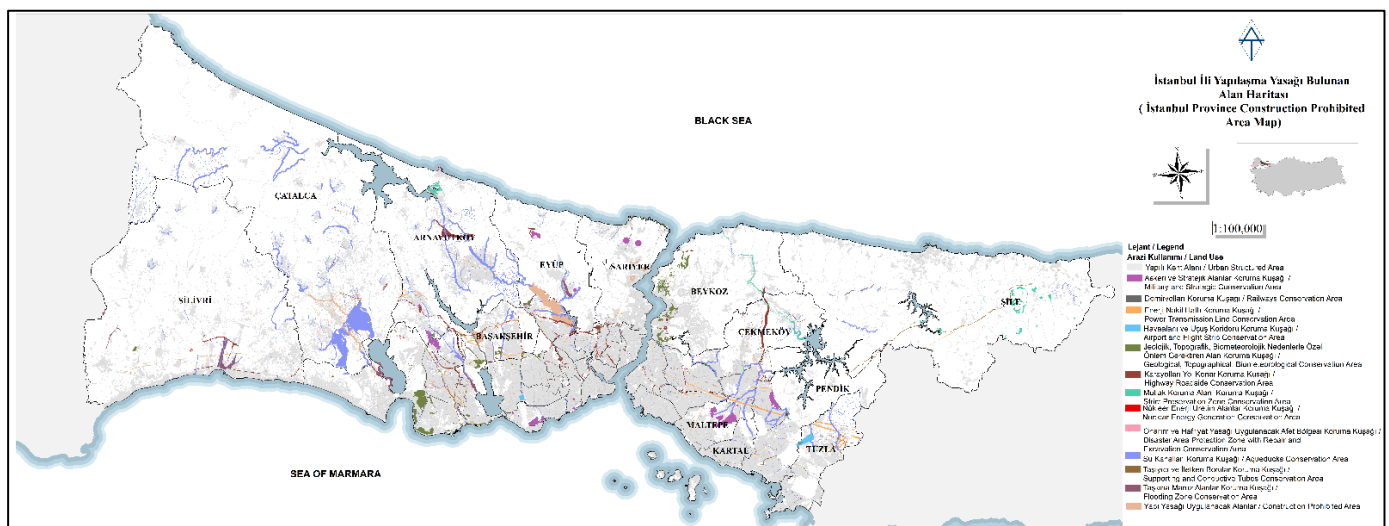


Figure 14. Istanbul Province Construction Prohibited Area Map.

In the light of the data revealed in the study, it can be said that the ground condition classification constitutes a data set group that should be used as a base before the mathematical model to be created and the characteristic data that are important for the creation of the model and the handling of a disaster-oriented urban regeneration.

It can be said that urban regeneration practices are based on two basic approaches. The first is “on-site conversion” and the second is “indirect conversion”. In the on-site regeneration method, the regenerated area is regenerated into a modern city by reviving or demolishing and reconstructing it, while in the indirect regeneration method, the people in the place to be regenerated are transferred to another place and that place is rebuilt. Although Law No. 6306 is open to discussion in many ways, it can be said that it adopts both approaches. At this point, these maps produced in the province of Istanbul with the focus of ‘Ground Structure’ are also of great importance in determining the areas where on-site regeneration is not suitable and interpreting that the regeneration should be done in these regions in an indirect way. Prior to the ‘Construction Status’ evaluations in the focus of the study, “Istanbul Province Ground Structure Suitability Map” was produced as seen in Figure 15.

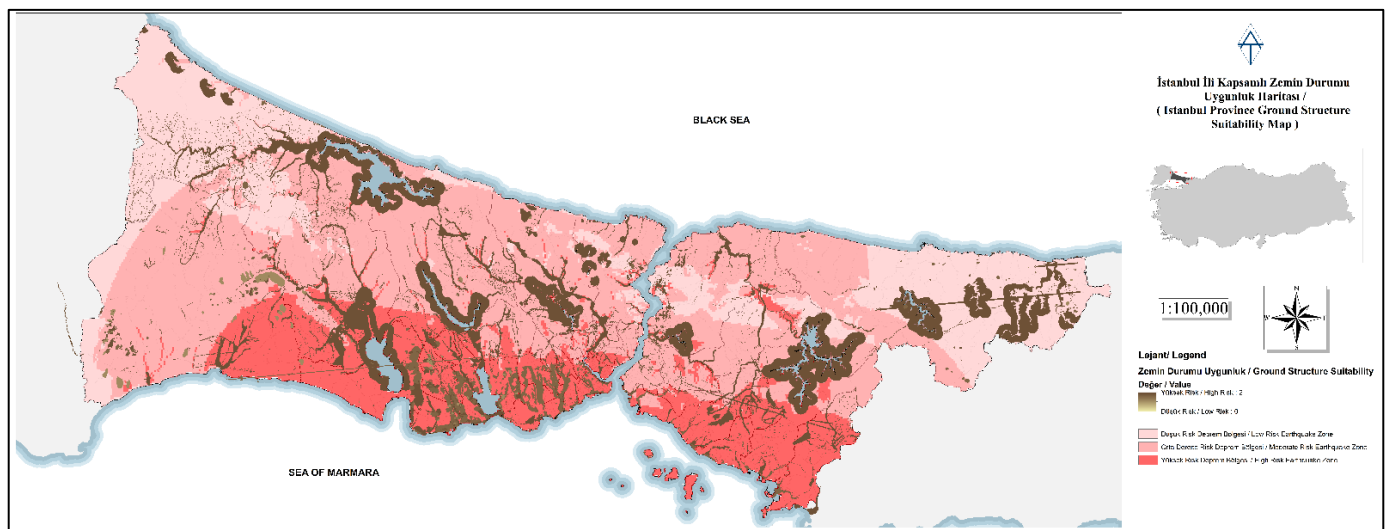


Figure 15. Istanbul Province Ground Structure Suitability Map.

According to this map ground structure oriented indirect regeneration areas are determined using hazard rate reclassification maps. All ground structure-based analyzes were reclassified between 0 and 2 in the evaluation, and result map were produced with equal weights, and thus, it was determined that the zoning of class 2 in the result map was not suitable for on-site regeneration. The map, within the scope of the analysis, the PGA values were handled separately and it was ensured that the earthquake hazard zonings were also seen on the map. When the DPRA to be revealed at the end of the study are located in these areas, the appropriate regeneration method will be revealed in accordance with the model.

When the building data purchased within the scope of the study is examined, before the evaluations are made according to the construction status within the scope of the study; in order to reveal how this evaluation scope expected in Law no. 6306 will be revealed according to the existing data, the building data layer attribute information has been examined. As a result, it has been understood that taking into account the slum areas, the occupancy status of the buildings, the number of building height, the age of the building and the building damage score analyzes produced in previous studies in the province of Istanbul is of critical importance for the determination of disaster-oriented regeneration areas. For the building data, the ‘Istanbul Province Building Vulnerability Map’ (Figure 16) was produced at the first stage. The percentage damage data used in the production of this map is taken from the IKDMP study. In the attribute information of the data, there are many parameters that represent the building damage risk. In the earthquake scenarios created in line with the information received, the percentage of completely destroyed or largely damaged buildings in the district and the values in the field named “Proportion_Damaged_Buildings” in the attribute table of the data were

used. Values between 0.25 and 8.2 are included in this field. The total number of district residences in the attribute table of the same layer are also shown as legends on the map. As seen on the map, the districts with the highest building damage percentage are Bakırköy, Beylikdüzü and Fatih. Among these districts, Bakırköy 7.7, Beylikdüzü 6.0 and Fatih 5.5 are the districts with a building damage percentage. When these areas are compared with the areas announced by the Ministry, the fact that none of the 72 risky areas are located in these districts shows that the building damage percentages for these identified areas are not taken into account in the determination of risky areas. While the percentage of building damage in Bağcılar district, which constitutes the majority of the declared risky areas, is 2.8, it is limited to 1.4 in Gaziosmanpaşa district and 2.1 in Esenler district. In order to meet the criteria of illegal buildings set forth in Table 1 in Law 6306 on the map, the classification of slums, empty buildings and non-accessible buildings is also included in the legend.

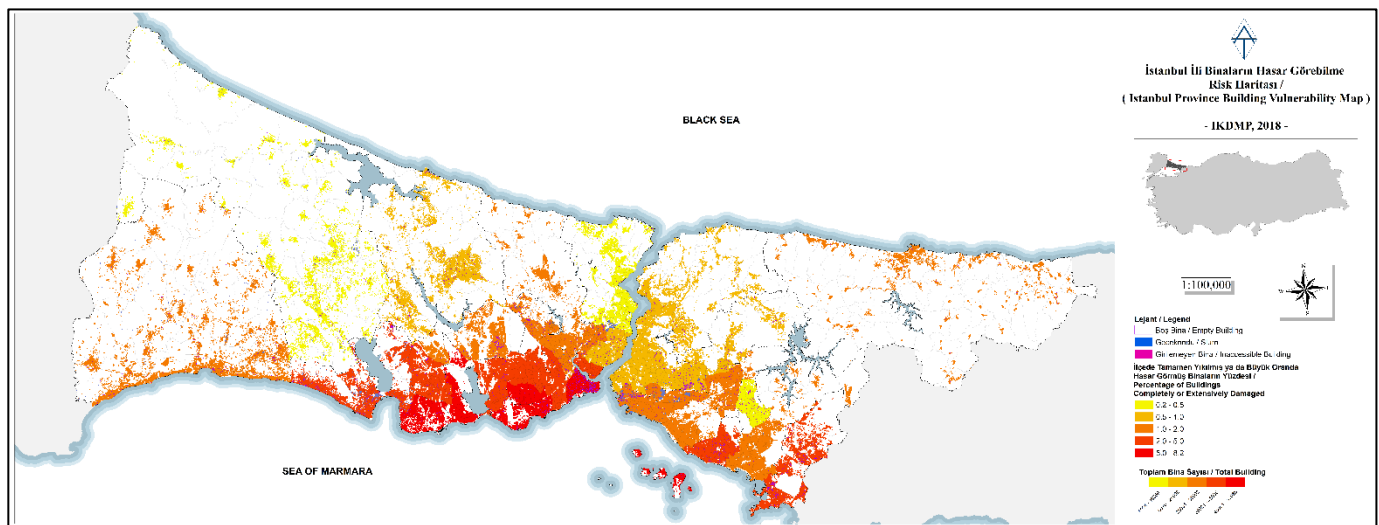


Figure 16. Istanbul Province Building Vulnerability Map (IKDMP, 2018).

Another of the criteria maps focused on construction status is the 'Istanbul Province District-Based Building Risk Score Map' (Figure 17). In this case, the building neighborhood risk scores vary between 0 and 0.79. This risk scoring was created according to the earthquake risk scenarios discussed in the IKDMP project carried out by IMM. Districts with the highest risk score in scoring; it is determined as Bahçelievler, Avcılar and Bakırköy. While the risk scores of Bahçelievler, Şirinevler, Zafer, Kocasinan and Siyavuşpaşa districts in Bahçelievler district vary between 0.79 and 0.537, the risk scores of Denizköşkler, Cihangir, Ambarlı, Merkez and Gümüşpala districts in Avcılar district vary between 0.446 and 0.709. At this point, when the overlaps between the risky areas announced by the Ministry and the districts with the highest risk scores are evaluated, the risky areas announced by the Ministry vary between 0.001 and 0.437 risk points. The mean risk score of these risky areas is seen as 0.096. These overlapping areas with a risk score above 0.2 are Küçükçekmece Kanarya district, Zeytinburnu Telsiz, Sümer, Beştelsiz, Seyitnizam districts and Bağcılar Evren district. At this point, while the average risk score of the areas produced by the Ministry is 0.096, if the risk score diversity of the province of Istanbul can score between 0 and 0.79, this shows that the Ministry does not take into account the studies carried out in the focus of previous studies within the framework of Istanbul. In a disaster-focused urban regeneration target, the fact that these studies, which are created by considering a parameter that can save many lives in a possible disaster such as a construction situation, are not taken into account.

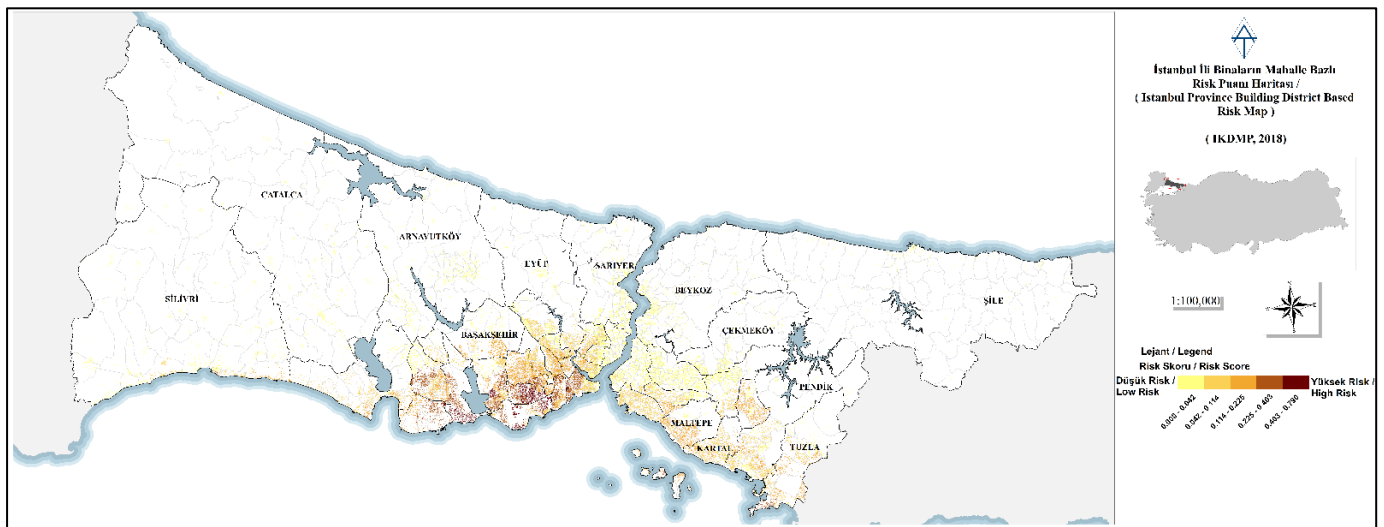


Figure 17. Istanbul Province District-Based Building Risk Score Map (IKDMP, 2018).

Building age data are available in most of the studies around the world regeneration examples where the vulnerability of the building was measured. The construction type of the overall building stock in Istanbul is mostly reinforced concrete. It is known that concrete wears out over time and loses its function. Although there are many studies on the life of concrete, detailed studies such as the production stage and raw material of the concrete in question are in question in the studies carried out in this detail. For this reason, the announcement date of the earthquake regulations was taken as a reference, without making a classification based on the life of the concrete. At the same time, an alternative construction year data has been used as an alternative to this data, assuming that the contract dates are the construction year. In the study, the construction year data were evaluated in 3 main classes as structures before 1980, structures between 1980 and 2000, structures after 2000 (Figure 18). However, even though there are building license dates used within the scope of IKDMP study between 2002 and 2008 in the building data attribute data produced and used in the studies, there is no construction year data belonging to the general building inventory data. At this point, it is not possible to determine a healthy risky area within the scope of this deficiency. It is seen that the building data needs to be qualified by updating it in TUCBS standards. At the same time, although these two studies conducted on the building inventory within the scope of IKDMP studies predict that 48 thousand buildings will be demolished throughout Istanbul, apart from this study, building column statics and building skeleton structure were examined in detail within a study, which was carried out in two districts, predicts that 109 thousand buildings will be demolished. However, at this point, the fact that the study sample was made only in two districts causes question marks in the minds. However, considering both figures and the population living in these buildings, it is obvious that they reveal the worst scenario that may occur in case of a delay in disaster-oriented regeneration. As a result of these works the areas that are determined correctly should be regenerate rapidly. It is of great importance at this point that it is necessary to understand that the increase in density is far from a solution and that the plan changes should be handled depending on the upper scale plans. In order to solve the financial pillar of urban regeneration on this basis, a new finance model should be developed under the direction of public-private partnerships.

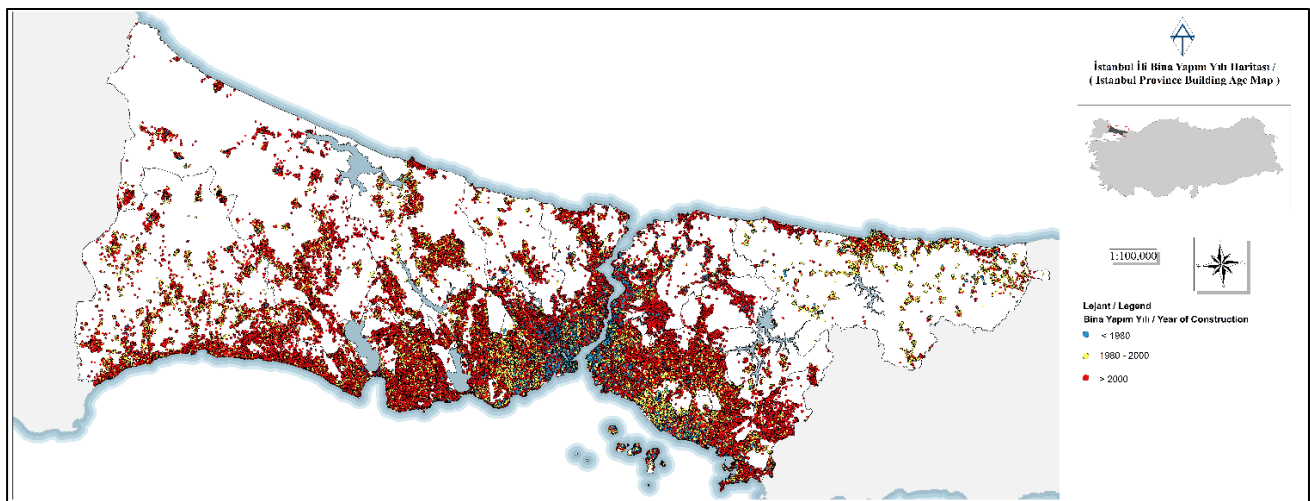


Figure 18. Istanbul Province Building Age Map.

The data on the building heights are handled in two different subjects in these earthquake risk studies. The building height can affect the extent of damage with its response to the ground during an earthquake. When considered within this framework, the type of ground structure is evaluated together with parameters such as the earthquake history of the relevant area. However, in addition to the reaction of the building height to the ground within the scope of the study, the fact that building height is frequently seen in applications other than plan rights in Istanbul makes it difficult to handle this criterion in a healthy way. In addition, the building height should not be considered alone. Buildings that are built according to the new earthquake regulation and the construction year of the building is new, regardless of the building heights, should be included in the study as durable structures. At this point, it has been ensured that buildings after 2008 should not be included in this criterion in the building inventory. However, considering that the construction year data is not healthy, the contribution of this criterion to the result will not give a qualified result. But according to the law, building height map is produced within the scope of the study (Figure 19).

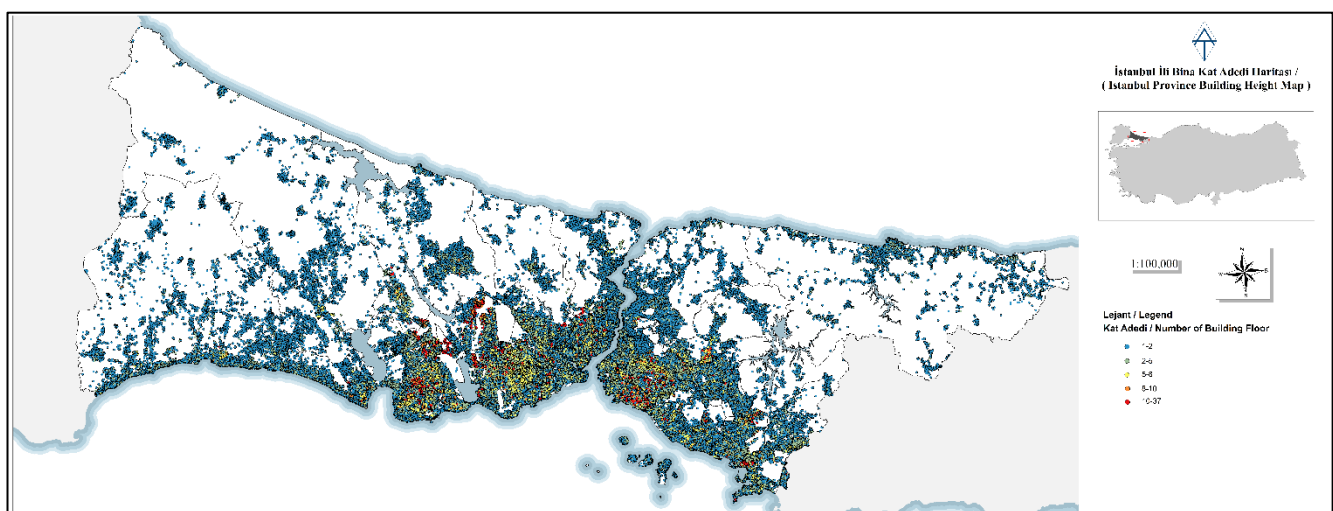


Figure 19. Istanbul Province Building Height Map.

In the light of these data, another parameter to be considered for the ‘Determination of Disaster-Oriented Regeneration Area’ model to be implemented throughout the province of Istanbul stands out. Making these areas to be determined throughout the province for

districts depending on different ground structure and construction may result in insufficient results in some districts. At this point, in addition to the application of the model throughout the province of Istanbul, revealing the priority areas on the basis of districts will provide healthier results and more accurate interpretations at the district scale. In the later stages of the study, the areas to be revealed by using the appropriate mathematical model throughout Istanbul will be compared with the district-based results and the differences will be evaluated.

In the light of the information revealed so far within the scope of this study, Beylikdüzü district has 10,867 buildings. The district is located in the high-risk earthquake zone with a PGA (g) value between 0.26 and 0.38. Additionally Beylikdüzü district is not among the areas announced by the decision of the Council of Ministers. Beylikdüzü district, which is a district with a stockpile, has been determined as a pilot district. As can be seen in Figure 20, areas with active landslides, floods, protection areas, and construction bans in the district ground structure are considered as areas that are not suitable for on-site regeneration. When these regions are examined, it has been determined that 8708 buildings are located in these areas in the district. In order to determine the areas that can be recommended for on-site regeneration, the building conditions in Barış (0.363) and Yakuplu (0.342) neighborhoods, which are the two neighborhoods with the highest neighborhood risk score, were examined. Considering the regulations that came into force after the 1999 Marmara Earthquake, when the pre-2000 construction and the structures above 10 floors are evaluated, many building blocks emerge within the scope of the district.

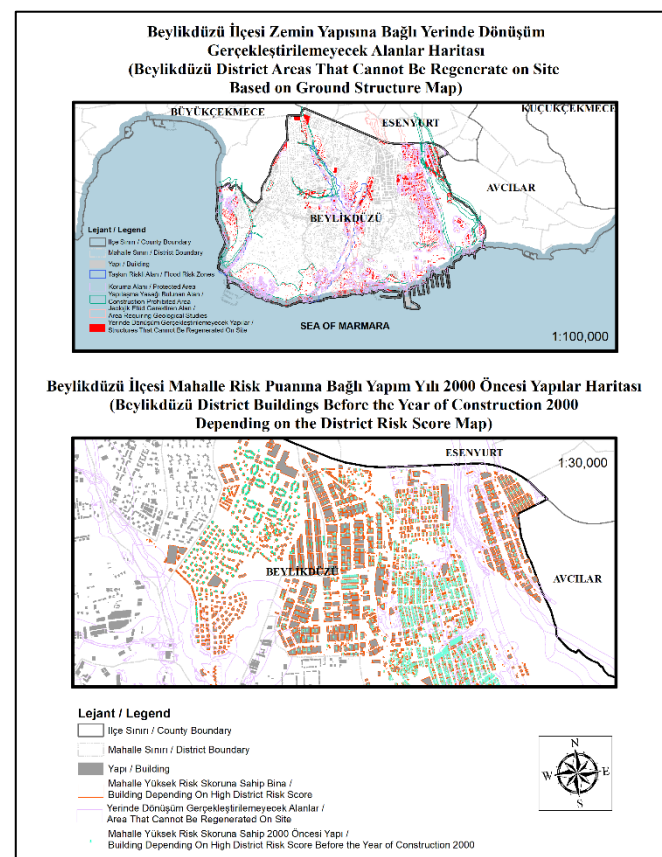


Figure 20. ‘Beylikdüzü District Areas That Cannot be Regenerate Based on Ground Structure Map’ and ‘Beylikdüzü District Buildings before the Year of Construction 2000 Depending on District Risk Score Map’.

According to the report prepared as a result of earthquake scenarios made by JICA, the building damage rate in Beylikdüzü is 0.6. This ratio shows that Fatih, Avclar, Bahçelievler and Bakırköy are among the districts with the highest building damage score. Additionally,

heavy damage is expected in a possible earthquake in 30 natural gas, 84 waste water, and 49 drinking water lines in the district. At this point, the fact that the regeneration has not yet started in this district shows that the disaster-oriented regeneration has not been implemented in accordance with its purpose. When construction status is evaluated, 6262 of the total building stock in Beylikdüzü district was built before 2000; 301 of these buildings are located in Barış and 1693 in Yakuplu Neighborhood. 246 of these buildings in Barış Neighborhood are structures with 10 floors and above. In Barış and Yakuplu, the minimum area size was determined as 30,000 m² and the public land ratio were taken into account in order to prioritize these areas to the determined building blocks by examining the 'suitability for settlement' and the construction status. As a result of analyzes made, the 'Disaster Oriented Regeneration Area' determined for two on-site regeneration is presented in Figure 21.

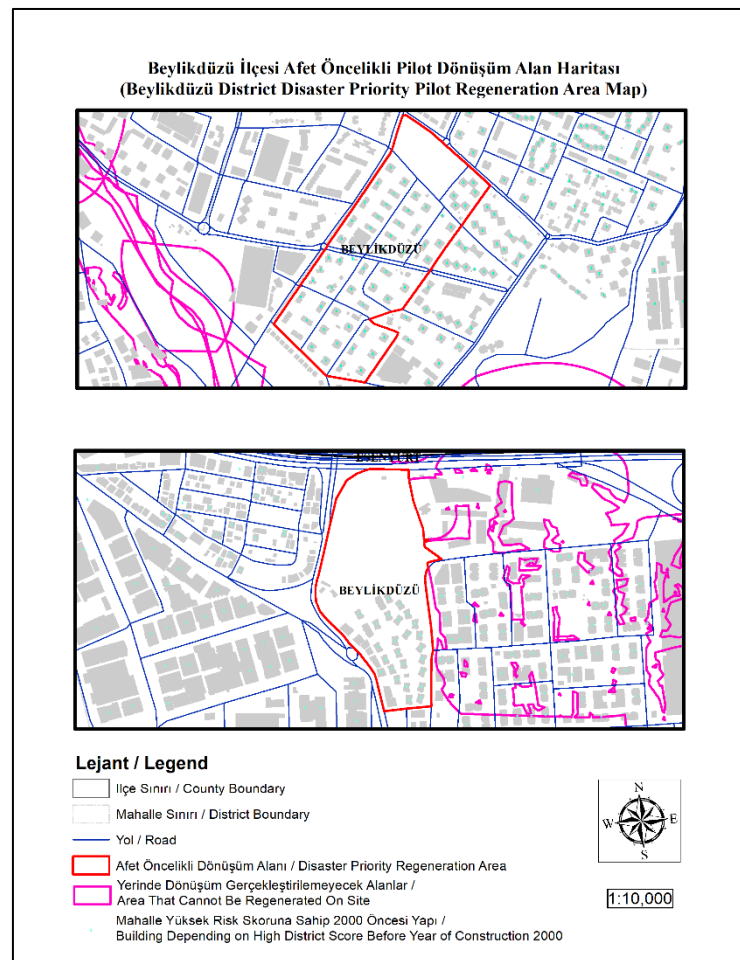


Figure 21. Beylikdüzü District Disaster Priority Pilot Regeneration Area Map.

5. Discussion

A disaster-oriented urban regeneration, which will be handled in the focus of Law No. 6306 and the regulations of the relevant law, is of vital importance considering the expected Istanbul earthquake on the North Anatolian Fault Line—East Ridge North Fault. When the studies carried out for the province of Istanbul are examined, these studies focused on scenarios that prove the need for this regeneration and revealed the damage rates expected to occur as a result of these earthquake scenarios. At this point, within the scope of the study for a disaster-oriented regeneration with an emphasis on earthquake focus, the determination of risky area among the regeneration methods determined as risky structure and risky area in Law No. 6306 was considered as the fastest and most effective

method for solution. At this point, first of all, these areas should be determined in a healthy way with an integrated, sustainable and automated urban regeneration model, and then the regeneration methods to be applied in these areas and the financial models to be used should be determined and the regeneration of these areas should be started quickly. The law numbered 6306, which was put into practice in 2012, was examined within the scope of the study, and how this mechanism could be operated with the data inventory in practice was examined. However, at this point, it is of great importance to evaluate the contribution of the risky areas announced by the Ministry since 2012 to the regeneration of Istanbul and whether there is a standard applied in the determination of these areas, in order to observe the difference between the application and the model to be created within the scope of the law-oriented study. In this context, the necessary criteria for the model were handled together with the existing data inventory in practice, and it was revealed in which areas these maps require regeneration and what problems can be experienced in these areas. The maps created as a result of these evaluations were compared with the risky areas announced by the decision of the Council of Ministers, and it was seen that the necessary evaluations and a standard were not applied for these areas determined in practice. At this point, it can easily be seen that this model to be created will not give sufficient results for the regeneration studies in order for the works carried out to be qualified.

For the province of Istanbul, it can be easily seen that many districts have different ground structure, building inventory and demographic structure. Due to the ground structure, it can be determined that high-risk areas should not be regenerated on-site, and as a result of these analyzes, which districts should be regenerated first. At this point, it is necessary to prioritize the districts such as Bahçelievler, Bakırköy, Avcılar, Beylikdüzü, and Zeytinburnu in the regeneration and the criterion weightings in the regeneration models should be handled separately for each district. In the later stages of the study, this finalization will be handled in a pilot district with weak ground structure, and at the same time, it will be implemented in a district with high land value and within the risky area announced by the Ministry, to ensure the control of the proposals within the scope of the study. It should not be forgotten that determining DPRA within the scope of the law for an expected earthquake and bringing the regeneration to a conclusion will save lives and form the basis for future targets in a possible scenario.

When we look at the other studies, it is easily seen that no study has been carried out to create a comprehensive urban regeneration model for the province of Istanbul. All the partial studies carried out were used as data source and reference within the scope of the study. At this point, in the next stages of the study, the data set theme will be to obtain the 'Building Damage Analysis' results, which will be obtained as a result of an up-to-date earthquake scenario, which will be carried out primarily by determining the Hazard, Sensitivity, Risk and Exposure distinctions of the data with clear lines. Then, the total risks and exposures will be revealed with the criterion weights obtained from the AHP survey as a result of the roadmap drawn by using this study, and the raster-based final product evaluation to be obtained will be revealed. This study will ensure that the necessity of these analyzes, which are currently being developed, the deficiency in the practices even when the studies are carried out in a basic way, the importance of disaster risk and the DPRA will be revealed and the areas in which the regeneration should be initiated will be determined clearly throughout the province. Another study is carried out to determine the properties in the hands of local governments for housing production in the whole province and the areas where housing can be produced in areas with housing problems. An integrated urban regeneration should not be limited to the identification of regeneration areas; in order to develop district strategies and to put forward sustainable solution proposals, regeneration can be realized by considering the housing problem and housing production together. This study was carried out in terms of being a base and a reason for this result.

Author Contributions: Conceptualization, A.T.; methodology, A.T.; software, A.T.; validation A.T. and T.Y.; formal analysis, A.T.; investigation, A.T.; resources, A.T.; data curation, A.T.; writing—original draft preparation, A.T.; writing—review and editing, A.T. and E.S.; visualization, A.T.; supervision, A.T.; project administration, T.Y.; funding acquisition, A.T. and E.S. All authors have read and agreed to the published version of the manuscript.

Funding: This research received no external funding.

Acknowledgments: All data used within the scope of the study were provided by the IMM Directorate of Urban Regeneration AR-GE Unit and all studies are supported by Istanbul Technical University Scientific Research Project Unit as a Doctoral Thesis Project (Project ID 40875).

Conflicts of Interest: The authors declare no conflict of interest. The funders had no role in the design of the study; in the collection, analyses, or interpretation of data; in the writing of the manuscript, or in the decision to publish the results.

References

1. Grimm, N.; Faeth, S.; Golubiewski, N.; Redman, C.; Wu, J.; Bai, X.; Briggs, J. Global change and the ecology of cities. *Science* **2008**, *319*, 756–760. [CrossRef] [PubMed]
2. Zhang, X.; Han, L.; Wei, H.; Tan, X.; Zhou, W.; Li, W.; Qian, Y. Linking urbanization and air quality together: A review and a perspective on the future sustainable urban development. *J. Clean. Prod.* **2022**, *346*, 130988. [CrossRef]
3. Camerin, F. From “Ribera Plan” to “Diagonal Mar”, passing through 1992 “Vila Olímpica”. How urban renewal took place as urban regeneration in Poblenou district (Barcelona). *Land Use Policy* **2019**, *89*, 104226. [CrossRef]
4. Camerin, F. Contemporary European City-Making Process. In *Materialization-Emptying-Regeneration on Large Land Properties*; Routledge: London, UK, 2022; p. 296. ISBN 9781003271666.
5. Karam, S.G. Rise of the Anatolian Tigers: Turkey Urbanization Review (No. 87180). The World Bank. 2015. Available online: <https://openknowledge.worldbank.org/handle/10986/22388> (accessed on 15 July 2022).
6. Adikutlu, S. Resilience to Disasters: Lessons from Turkish Urban Regeneration Experiences. Master’s Thesis, Middle East Technical University, Ankara, Turkey, 2019.
7. Japan International Corporation Agency (JICA) and İstanbul Metropolitan Municipality (IMM). Pacific Consultants International and OYO Corporation. In *The Study on A Disaster Prevention/Mitigation Basic Plan in Istanbul Including Microzonation in The Republic of Turkey*; Japan International Corporation Agency (JICA): Tokyo, Japan; İstanbul Metropolitan Municipality (IMM): İstanbul, Turkey, 2002. Available online: http://www.ibb.gov.tr/tr-TR/SubSites/DepremSite/Publishingimages/JICA_ENG.pdf (accessed on 13 October 2022).
8. Earthquake Master Plan for Istanbul, Istanbul Metropolitan Municipality Construction Directorate Geotechnical and Earthquake Investigations Department, Istanbul. 2003. Available online: <http://www.koeri.boun.edu.tr/deprenmmuh/Projeler-Bilgi/IBB-IDMP-ENG.pdf> (accessed on 13 October 2022).
9. OYO Inc. *Production of the Microzonation Report and Maps on European Side (South), Final Report to Istanbul Metropolitan Municipality*; OYO Inc.: Tokyo, Japan, 2007.
10. OYO Inc. *Production of the Microzonation Report and Maps on Asian Side, Final Report to Istanbul Metropolitan Municipality*; OYO Inc.: Tokyo, Japan, 2009.
11. Geology of the Istanbul Province, Metropolitan Municipality of Istanbul Department of Earthquake Risk Management and Urban Improvement Report. 2011. Available online: <https://data.ibb.gov.tr/en/organization/about/depren-risk-yonetimi-ve-kentsel-iyilestirme-daire-baskanligi> (accessed on 13 October 2022).
12. Ministry of Environment and Urbanization. *6306 Numbered Law on Transformation of Areas under Risk of Disaster*; Ministry of Environment and Urbanization: Ankara, Turkey, 2012. Available online: <https://www.mevzuat.gov.tr/mevzuatmetin/1.5.6306.pdf> (accessed on 13 October 2022).
13. Istanbul Urban Transformation Master Plan Report, Metropolitan Municipality of Istanbul Department of Earthquake Risk Management and Urban Improvement. 2018. Available online: <https://miyamotointernational.com/istanbul-urban-transportation-master-plan-feasibility-studies/> (accessed on 15 July 2022).
14. Irwansyah, E.; Winarko, E.; Rasjid, Z.E.; Bektı, R.D. Earthquake hazard zonation using peak ground acceleration (PGA) approach. In *Proceedings of the 2013 International Conference on Science & Engineering in Mathematics, Chemistry and Physics*, Jakarta, Indonesia, 24–25 January 2013; Volume 423, p. 012067.
15. Atkinson, G.M.; Boore, D.M. Ground-Motion Prediction Equations for the Average Horizontal Component of PGA, PGV, and 5%-Damped PSA at Spectral Periods between 0.01 s and 10.0 s. *Earthq. Spectra* **2003**, *24*, 99–138. [CrossRef]