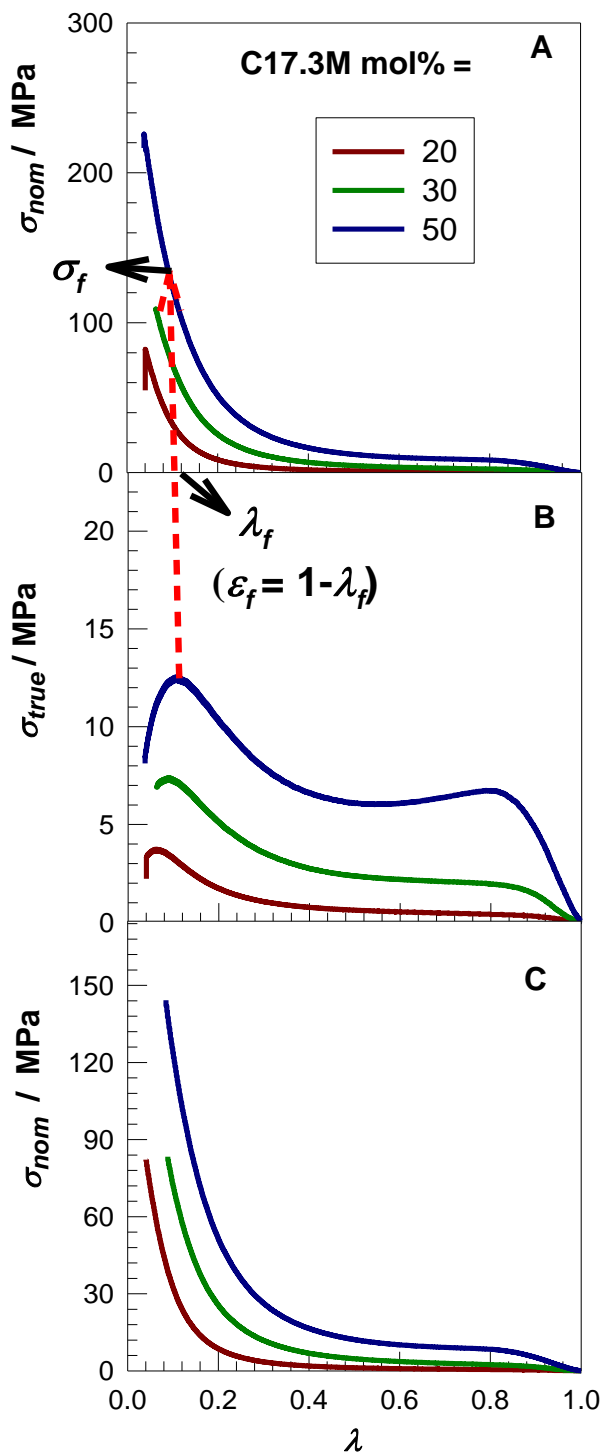
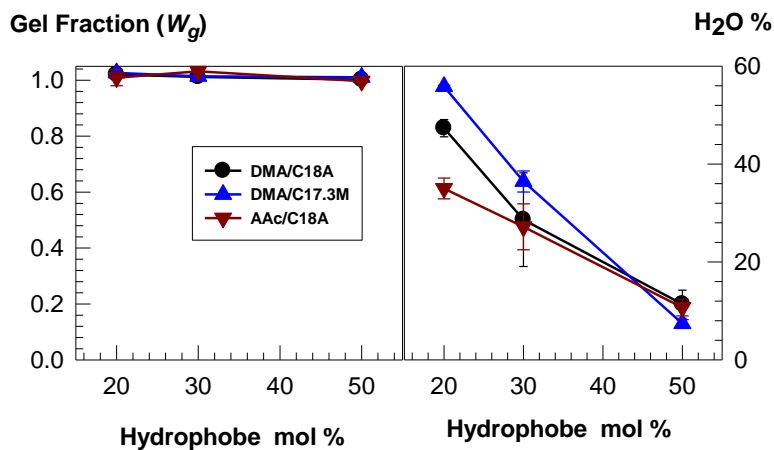


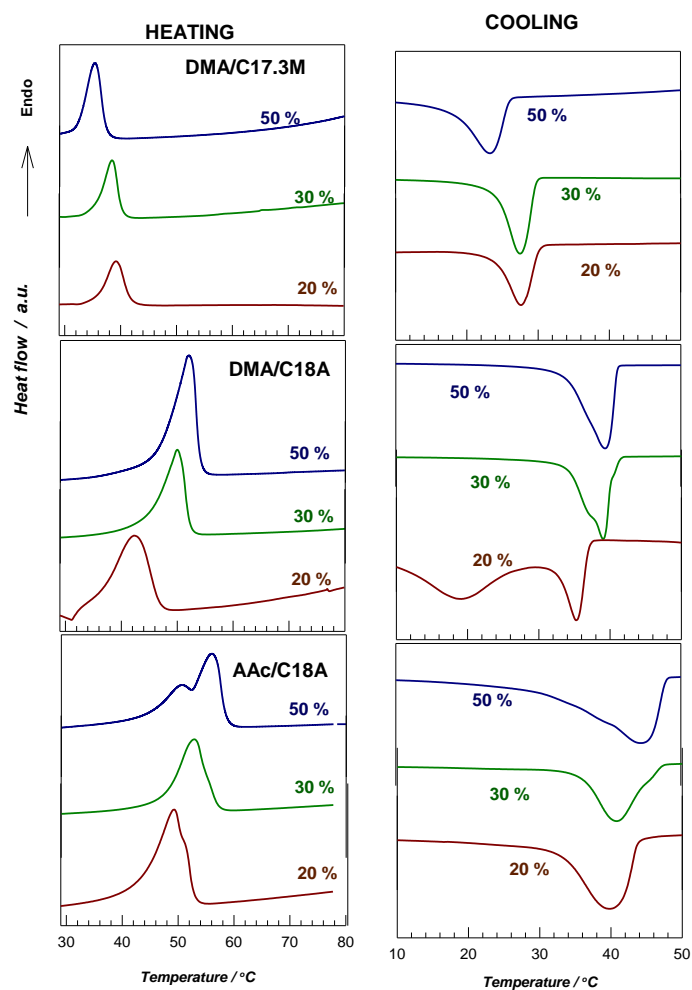
## Supplementary Figures



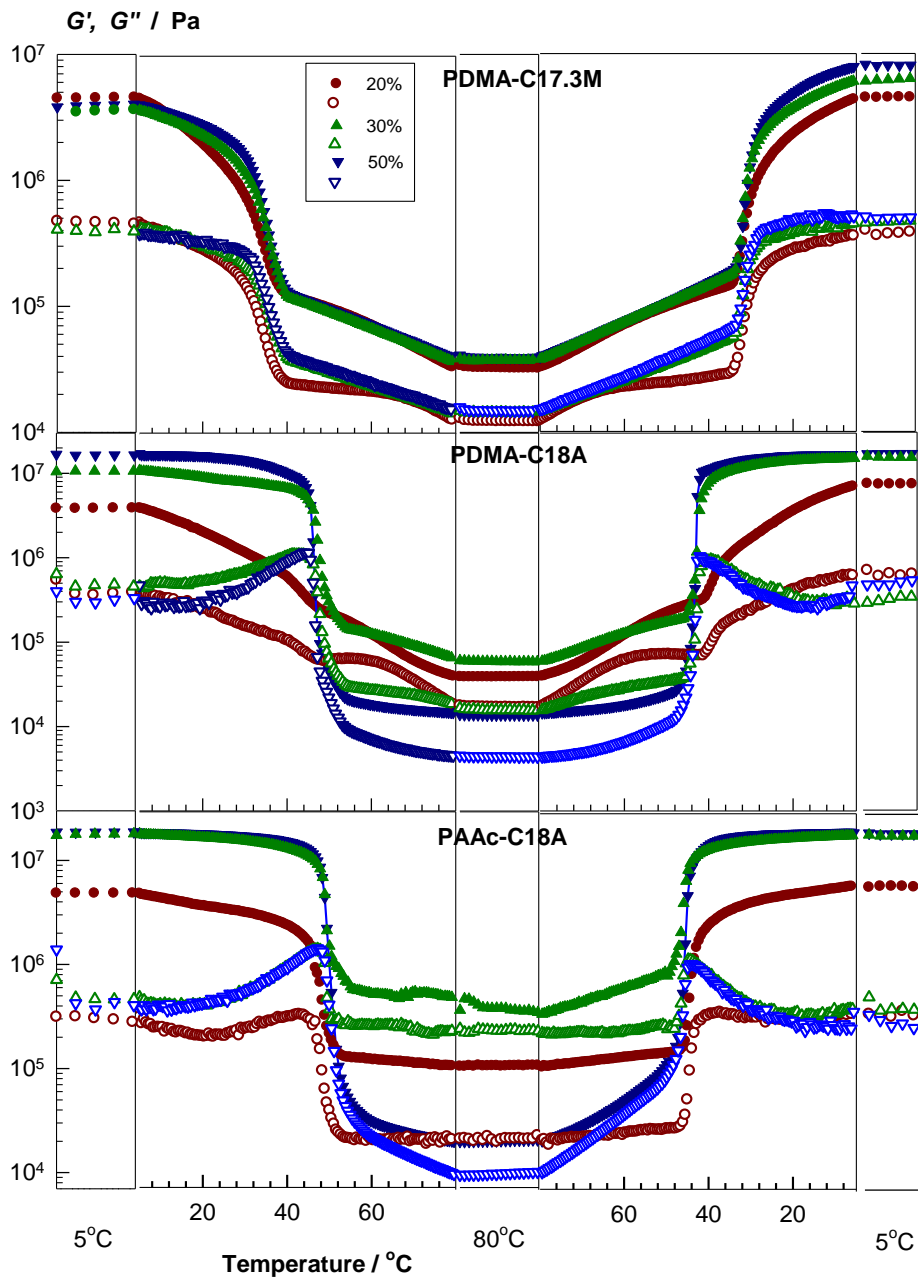
**Figure S1.** Typical stress-strain curves of DMA/C17.3M hydrogels under compression as the dependences of the nominal  $\sigma_{nom}$  (A) and true stresses  $\sigma_{true}$  (B) on the compression ratio  $\lambda$ . The dashed red arrow illustrates calculation of the real fracture stress for the hydrogel containing 50 mol% C17.3M from the maximum in  $\sigma_{true}$  vs  $\lambda$  curve. The corrected  $\sigma_{nom}$  vs  $\lambda$  curves up to the fracture point are shown in C.



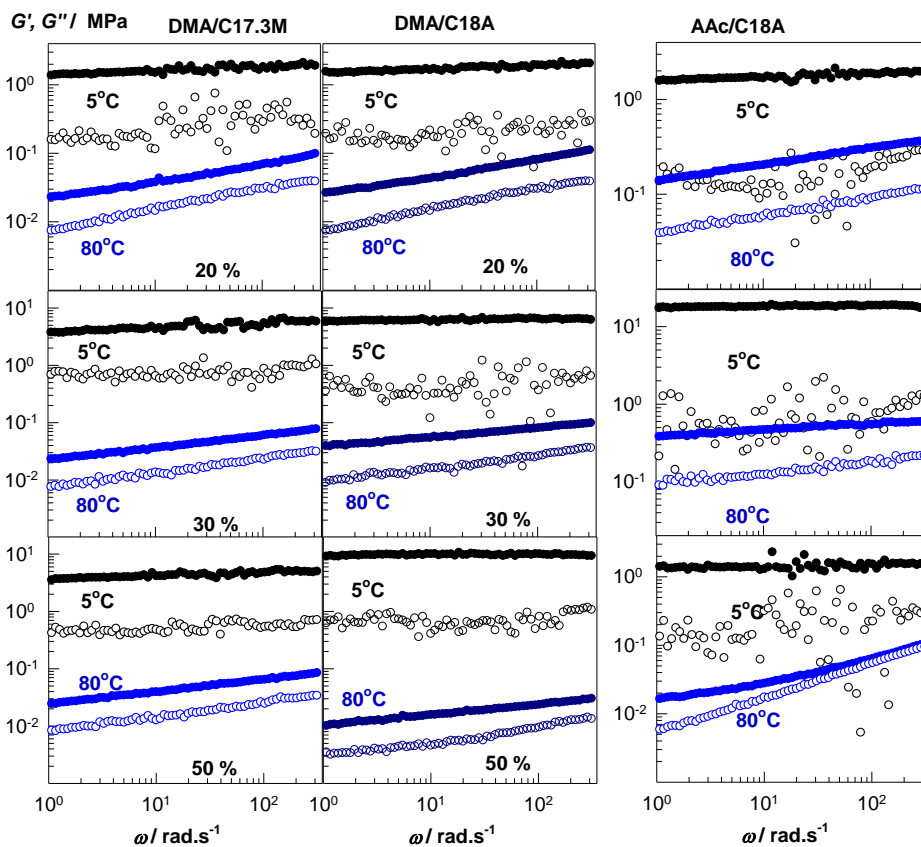
**Fig. S2.** Gel fraction  $W_g$  and equilibrium water content (H<sub>2</sub>O %) of the hydrogels plotted against their hydrophobe content.



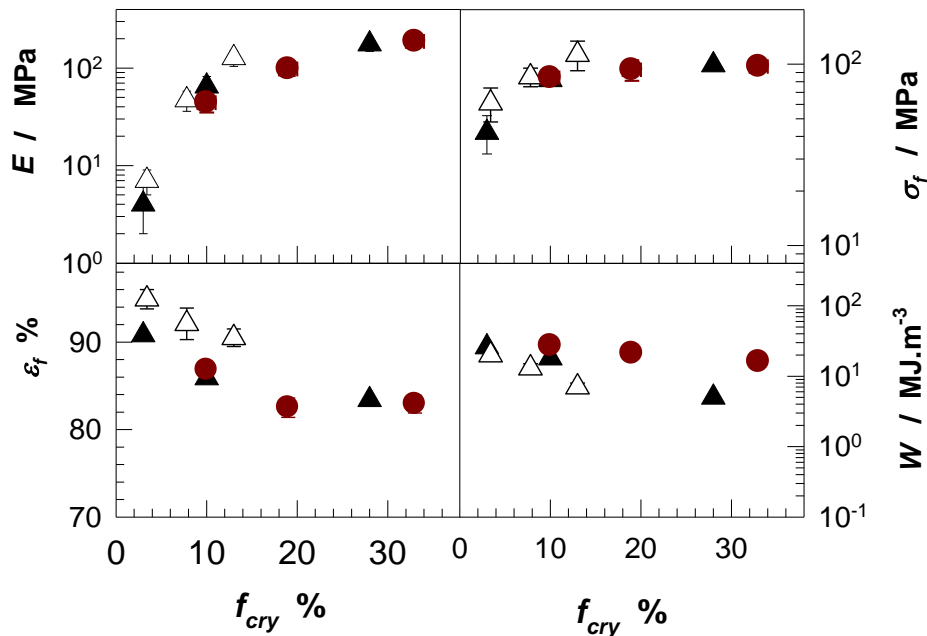
**Fig. S3.** DSC traces of the hydrogels. The type of the hydrogels and their hydrophobe content are indicated.



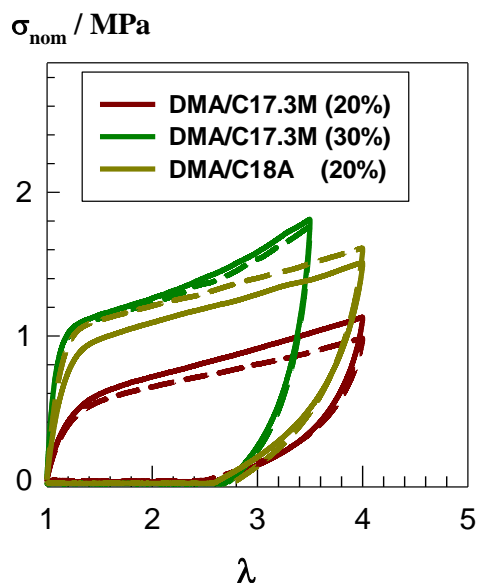
**Fig. S4.**  $G'$  (filled symbols), and  $G''$  (open symbols) of the hydrogels during the heating - cooling cycle between 5 and 80 °C. The type of the hydrogels and their hydrophobe content indicated.  $\omega = 6.28 \text{ rad}\cdot\text{s}^{-1}$ .  $\gamma_0 = 0.001$ .



**Fig. S5**  $G'$  (filled symbols) and  $G''$  (open symbols) of the hydrogels with 20, 30, and 50 mol% hydrophobe at 5 and 80 °C shown as a function of the frequency  $\omega$ .  $\gamma_0 = 0.001$ .



**Fig. S6.** Young's modulus  $E$ , compressive fracture stress  $\sigma_f$ , fracture strain  $\epsilon_f$ , and toughness  $W$  of the hydrogels plotted against the fraction  $f_{cry}$  of units in crystalline domains. Hydrogels: DMA/C17.3M ( $\Delta$ ), DMA/C18A ( $\blacktriangle$ ), AAc/C18A ( $\bullet$ ).



**Figure S7.** (A): Two successive loading / unloading tensile cycles up a maximum elongation ratio  $\lambda_{max}$  of 3.5 and 4.0 for the hydrogel samples indicated. Note that between each cycle, the gel samples were immersed in water at 70 °C. 1<sup>st</sup> and 2<sup>nd</sup> cycles are shown by the solid and dashed curves, respectively.