

## A NEW METHOD FOR CALCULATING OF ELECTRIC FIELDS INSIDE ANY ARBITRARY SHAPE ELECTRODE SYSTEMS

Murtaza Farsadi<sup>1</sup>

*e-mail: m.farsadi@mail.urmia.ac.ir*

Özcan Kalenderli<sup>2</sup>

*e-mail: ozcan@elk.edu.itu.tr*

<sup>1</sup>Urmia University, Faculty of Engineering, Department of Electrical Engineering, Urmia, Iran

<sup>2</sup>Istanbul Technical University, Department of Electrical Engineering, Istanbul, Turkey

*Keywords: Electric Field Intensity, Equipotential Lines, Electrode Systems*

### ABSTRACT

In this paper, a new method for calculating of electric fields inside any arbitrary shape electrode systems have been represented. In research and educational activities, we can use also this computer code for calculating electric field intensity and equipotential lines around any arbitrary shape electrode. This computer code solves two couple poisson equations in general curvilinear coordinate. For solving elliptic differential equations we have been used Thompson, Thames & Mastin (TTM) algorithm. The user of this code can also solve laplace's equation instead of poisson's equation. By using this new method, we can find electric field distribution inside any complex electric system.

### I INTRODUCTION

In this paper, we can obtain electric field intensity and also equipotential lines inside any arbitrary shape electrode systems with Thompson, Thames & Mastin (TTM) algorithm. With this computer code we can solve two couple poisson or laplace equations in general curvilinear coordinate. For finding electric field intensity and also equipotential lines inside any electrode system, we transfer actual field or actual coordinate system (surface of any arbitrary shape electrode) and also its outer boundary to rectangular calculating field or rectangular coordinate system. Solving of poisson and also laplace equations are easy in rectangular field than actual field [1].

As we know that, by using conformal mapping, we can solve electric fields and also equipotential lines around some definite electrodes [2]. In conformal mapping method we define any complex transfer function and then, by using this function, for every point in actual complex plane- $z$  with coordinates  $x$  and  $y$  we can find one or many points in an other complex plane- $w$  with coordinates  $u$  and  $v$ . The relationship between points in plane- $z$  and plane- $w$  have been determined by complex analytic function  $w = f(z)$ . This complex analytic function is

named transfer function also. Since definition of transfer function is not possible for all type electrode system, therefore, in general we can use conformal mapping technique under some special conditions [2].

In this computer code, similar to conformal mapping technique for calculating electric field and equipotential lines around any arbitrary shape electrodes first of all we transfer actual field to rectangular calculating field and after solving laplace or poisson equations in rectangular coordinate system we again transfer the results to actual field also. The constraints of the conformal mapping method have been not seen in this code. In mathematical method of this computer program, we will explain transfer function briefly.

In the past several methods such as finite difference method, finite element method, boundary element method and charge simulation method have been used for solving electric field distribution [1-9]. According to some difficulties in the above mentioned different methods we have obtained a paper that is comparing finite difference method, finite element method and charge simulation method with each other [4]. In finite difference method if the shape of the electrode is complicated therefore the results obtained by this method will have a large errors. In this new method we can analysis electric field and also equipotential lines inside any arbitrary shape electrode systems with minimum errors.

### II MATHEMATICAL DISCUSSION

Since calculation of electric field intensity in rectangular plane is quite simple therefore in this computer program we transfer actual computational field and its outer boundary to any computational rectangular plane.

Henceforth, we show actual field with  $E$  and calculating field with  $E^T$ . Figure 1 shows actual field (body or electrode and its outer boundary) in complex  $z$ -plane with  $x$  and  $y$  coordinates.

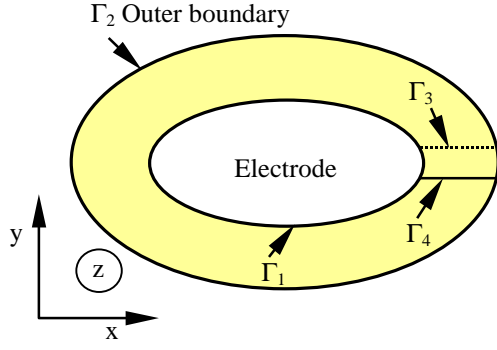


Figure 1. One electrode and its outer boundary (actual field)

Figure 2 shows calculating field in complex w-plane with coordinates  $u$  and  $v$  respectively. In general, electrode surface and outer boundary transfer to  $v$  constant lines ( $v_1$  and  $v_2$ ) that is shown in figure 2.

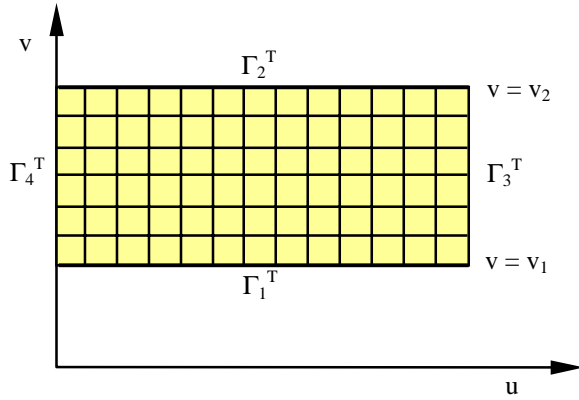


Figure 2. Computational field of one electrode and its outer boundary

In figure 1,  $\Gamma_1$  shows body or electrode surface and  $\Gamma_2$  shows outer boundary in the computational field, in this figure also we assume two cutting lines or curves  $\Gamma_3$  and  $\Gamma_4$  respectively these hypothesis lines or curves connect body or electrode to outer boundary in actual field.

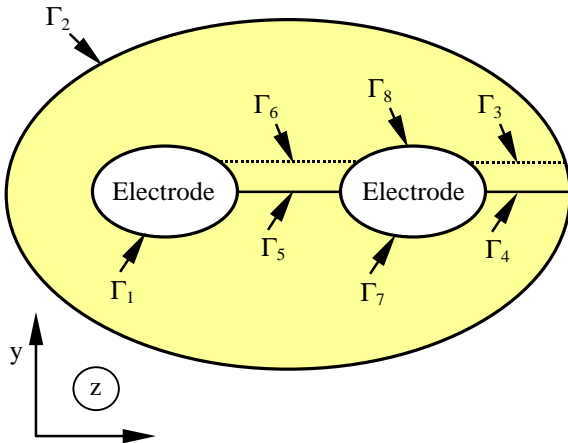


Figure 3. Two electrodes and their boundary (actual field)

These hypothesis lines or curves in rectangular computational field have been shown by lines  $\Gamma_3^T$  and  $\Gamma_4^T$ . Notice that  $\Gamma_3$  and  $\Gamma_4$  in actual field have been coincide to each other therefore coordinates  $x(u, v)$  and  $y(u, v)$  for  $\Gamma_3$  and  $\Gamma_4$  will be equal.

In the above discussion we assumed only one electrode or body in actual field. In this code we can assume many electrodes in actual field therefore by this new method electric field intensity and equipotential lines around three phase transmission line can be investigated. Figure 3 shows actual field and figure 4 shows computational field of two electrodes configuration.

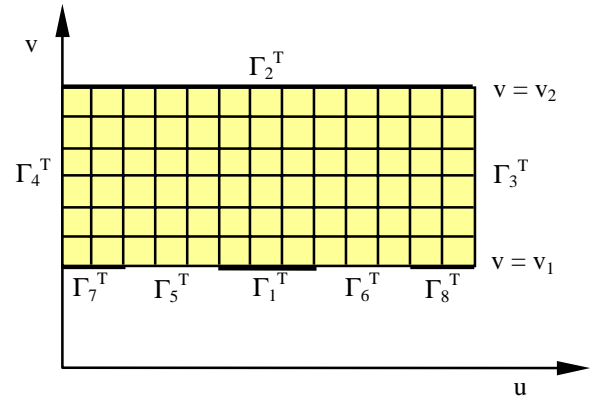


Figure 4. Computational field of two electrodes and their outer boundary

From the point of view of mathematics, transfer from actual field to computational field and vice versa can be shown by the following equations.

$$\begin{bmatrix} u \\ v \end{bmatrix} = \begin{bmatrix} u(x, y) \\ v(x, y) \end{bmatrix} \quad (1)$$

$$\begin{bmatrix} x \\ y \end{bmatrix} = \begin{bmatrix} x(u, v) \\ y(u, v) \end{bmatrix} \quad (2)$$

The matrices of this transformation are as follows:

$$J_1 = \begin{bmatrix} u_x & u_y \\ v_x & v_y \end{bmatrix}, \quad J_2 = \begin{bmatrix} x_u & x_v \\ y_u & y_v \end{bmatrix} \quad (3)$$

According to above equation we can say that  $[J_1] = [J_2]^{-1}$ . In general the elements of matrix  $J_1$  are obtained as follows:

$$u_x = y_v / J, \quad u_y = -x_v / J, \quad (4a)$$

$$v_x = -y_u / J, \quad v_y = x_u / J \quad (4b)$$

In the above relationships  $J$ , shows the determinant of matrix  $J_2$ , following equation shows the determinant of matrix  $J_2$ :

$$J = \det [J_2] = x_u y_v - x_v y_u \quad (5)$$

The solved equations in this computer program are laplace or poisson. At first step we consider laplace equations solution and at the second step we investigate poissons equations solution. In general, in curvilinear coordinate system laplace equations are shown as follows:

$$u_{xx} + u_{yy} = 0 \quad (6)$$

$$v_{xx} + v_{yy} = 0 \quad (7)$$

with respect to Dirichlet boundary conditions can be obtained following equations:

$$\begin{bmatrix} u \\ v \end{bmatrix} = \begin{bmatrix} u_1(x, y) \\ v_1 \end{bmatrix}, \quad [x, y] \in \Gamma_1^T \quad (8)$$

$$\begin{bmatrix} u \\ v \end{bmatrix} = \begin{bmatrix} u_2(x, y) \\ v_2 \end{bmatrix}, \quad [x, y] \in \Gamma_2^T \quad (9)$$

In the above equations  $u_1$  and  $u_2$  are known functions that are obtained from curves  $\Gamma_1$  and  $\Gamma_2$  (electrode surface and outer boundary) separately. In computational field (rectangular coordinate), we use following equations:

$$\alpha x_{uu} - 2\beta x_{uv} + \gamma x_{vv} = 0 \quad (10)$$

$$\alpha y_{uu} - 2\beta y_{uv} + \gamma y_{vv} = 0 \quad (11)$$

In equations (10) and (11), constants  $\alpha$ ,  $\beta$  and  $\gamma$  can be obtained from following equations:

$$\alpha = x_u^2 + y_u^2 \quad (12)$$

$$\beta = x_u x_v + y_u y_v \quad (13)$$

$$\gamma = x_v^2 + y_v^2 \quad (14)$$

Under transferred boundary conditions, we obtain following equations:

$$\begin{bmatrix} x \\ y \end{bmatrix} = \begin{bmatrix} f_1(u, v_1) \\ f_2(u, v_1) \end{bmatrix}, \quad [u, v] \in \Gamma_1^T \quad (15)$$

$$\begin{bmatrix} x \\ y \end{bmatrix} = \begin{bmatrix} g_1(u, v_2) \\ g_2(u, v_2) \end{bmatrix}, \quad [u, v] \in \Gamma_2^T \quad (16)$$

Functions  $f_1$ ,  $f_2$ ,  $g_1$ ,  $g_2$  in equations (15) and (16) are well defined, since these functions are the coordinates of region ( $\Gamma_1$  and  $\Gamma_2$ ) that we define in the actual field.

Notice that the systems of the above equations are quasi-linear and elliptic, therefore the solution of these functions are very complicated than laplace equations in actual field coordinates, but in this code we solve these equations in rectangular coordinate system that make easy our calculations.

If we have two electrodes in actual field for second electrode also we can obtain following equations:

$$\begin{bmatrix} x \\ y \end{bmatrix} = \begin{bmatrix} h_1(u, v_1) \\ h_2(u, v_1) \end{bmatrix}, \quad [u, v_1] \in \Gamma_7^T \quad (17)$$

$$\begin{bmatrix} x \\ y \end{bmatrix} = \begin{bmatrix} o_1(u, v_1) \\ o_2(u, v_1) \end{bmatrix}, \quad [u, v_1] \in \Gamma_8^T \quad (18)$$

In general, in curvilinear coordinate system poisson equations are shown as follows:

$$u_{xx} + u_{yy} = \epsilon_1 \quad (19)$$

$$v_{xx} + v_{yy} = \epsilon_2 \quad (20)$$

In the above equations  $\epsilon_1$  and  $\epsilon_2$  can be equal or different. According to above discussion, we obtain following equations in transformed field or plane.

$$\alpha x_{uu} - 2\beta x_{uv} + \gamma x_{vv} + J^2(\epsilon_1 x_u + \epsilon_2 x_v) = 0 \quad (21)$$

$$\alpha y_{uu} - 2\beta y_{uv} + \gamma y_{vv} + J^2(\epsilon_1 y_u + \epsilon_2 y_v) = 0 \quad (22)$$

### III FLOWCHART OF TTM CODE

Figure 5 shows the flowchart of this computer code. As we have mentioned previously, by this computer code we can analysis electric field intensity and also equipotential lines inside any arbitrary shape electrode systems .

### IV COMPARISION OF THE RESULTS

Figure 6 and figure 7 shows the electric field intensity and also equipotential lines inside any arbitrary shape electrode systems . In figure 6 electric field intensities and also equipotential lines inside electrode system with three different height protrusions , and also in figure 7 electric field and equipotential lines inside electrode system with only one protrusion have been obtained by this new method.

Comparison these results with analogue electrode systems electric field intensity, that obtained with different methods in given references, shows that we can use this new algorithm for analyzing electric field intensity around or inside any arbitrary shape electrode or conductors with the same or different configuration.

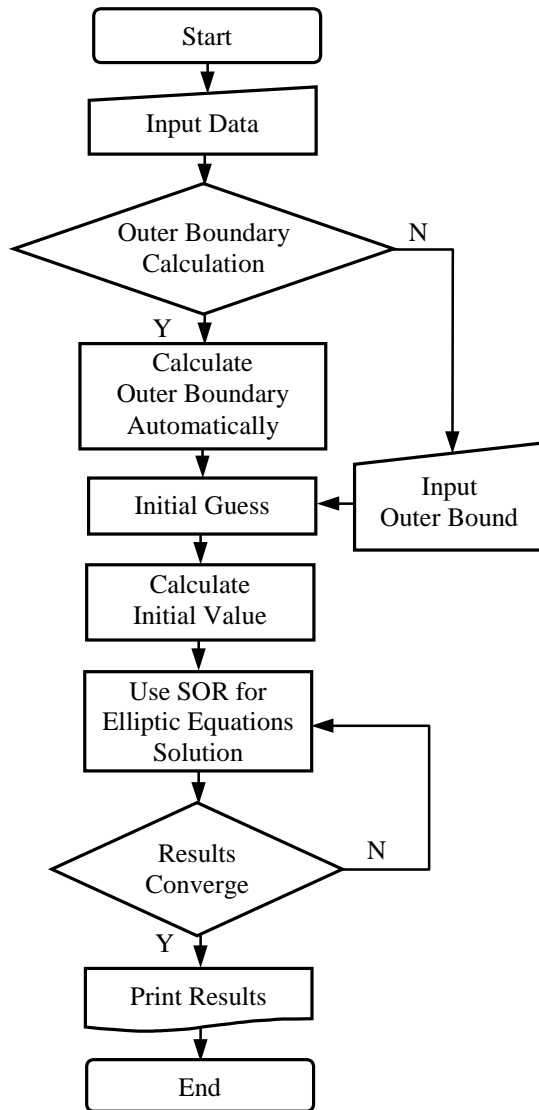


Figure 5. Flowchart

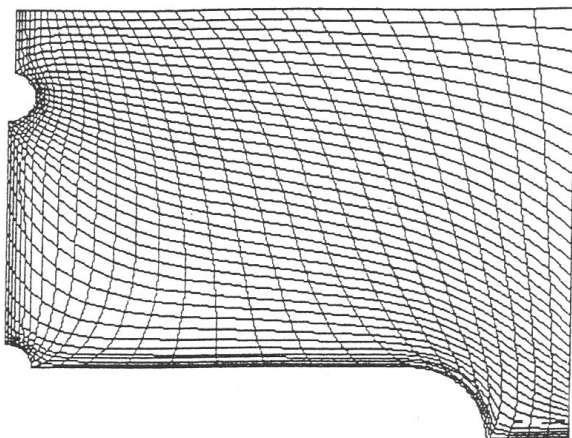


Figure 6. Electric field intensities and equipotential lines inside electrode system with different height protrusions.

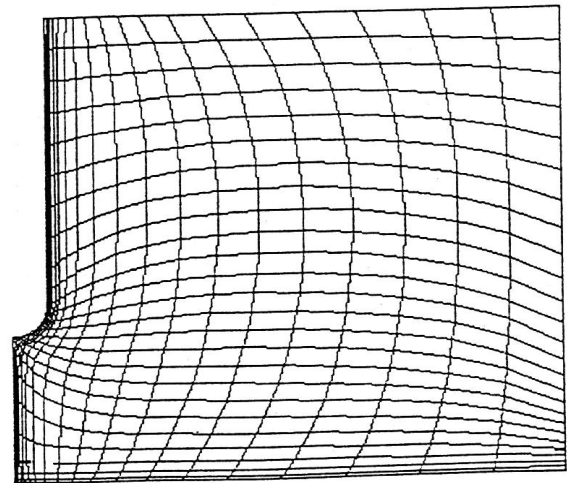


Figure 7. Electric field intensities and equipotential lines inside electrode system with protrusion

## V CONCLUSION

We have described here a new computer program with the ability to solve poisson's and laplace's equations. With this new method we can calculate electric field intensity and also equipotential lines around or inside any arbitrary shape electrode or conductors with the same or different configurations. As we know that in high voltage engineering, analysis of electric field around or inside any equipment has very important role in the design of that equipment therefore, we can use this new computer code in the design and construction of any HV equipment that are used in electric industry. Concerning to precision and ability of this new method we can use this code also in research and educational activities.

## REFERENCES

- [1] J. D. Anderson, *Computational Fluid Dynamics*, Int. Edition, McGraw-Hill, 1995.
- [2] H. Mohseni, *Advanced High Voltage Engineering*, Tehran University Publications, Tehran, Iran, 1996.
- [3] H. Mohseni, *Fundamentals of High Voltage Engineering*, Tehran University Publication, Tehran, Iran, 1998.
- [4] H. Steinbigler, D. Haller, A. Wolf, "Comparative Analysis of Methods for Computing 2-D and 3-D Electric Fields", *IEEE Transactions on Electrical Insulation*, Vol. 26, No. 3, pp. 529-536, 1991.
- [5] S. S. Bamji, A. T. Bulinski, K. Mprasad, "Electric Field Calculation with the Boundary Element Method", *IEEE Transactions on Electrical Insulation*, Vol. 28, No. 3, pp. 420-424, 1993.
- [6] P. L. Levin, A. J. Hansen, D. Beatovic, and H. Gan, "A Unified Boundary Element – Finite Element Package", *IEEE Transactions on Electrical Insulation*, Vol. 28, No. 2, pp. 161-167, 1993.

- [7] M. G. Mohemmedi, *High Voltage Engineering*, Amirkabir University of Technology, Tehran, Iran, 1996.
- [8] M. S. Naidu, V. Kamaraju, *High Voltage Engineering*, Int. Ed., Tata Mcgraw-Hill, New Delhi, 1997.
- [9] E. Kuffel, W. S. Zaengl, *High Voltage Engineering Fundamentals*, Pergamon Press, Oxford, 2000.
- [10] T. J. Gallagher, A. J. Pearman, *High Voltage Measurement Testing and Design*, J. Wiley & Sons, Chichester, 1983.
- [11] J. N. Hoffman, P. Pulino, "New Developments on the Combined Application of Charge Simulation and Numerical Methods for the Computation of Electric Fields", *IEEE Transactions on Power Delivery*, Vol. 10, No. 2, pp. 1105-1111, 1995.
- [12] J. Gartner, E. Gockenbach, H. Borsi, "Improvement of Electrical Field Analysis by Use of Computer Aided Software Engineering Tools", *Proceedings of 11<sup>th</sup> International Symposium on High Voltage Engineering*, Paper No. 467, 1999.
- [13] T. Zaho, M. G. Comber, "Calculation of Electric Field and Potential Distribution Along Non-ceramic Insulators Considering the Effect of Conductors and Transmission Towers", *IEEE Transactions on Power Delivery*, Vol. 15, No.1, 2000.
- [14] S. Chakravorti, H. Steinbigler, "Boundary Element Studies on Insulator Shape and Electric Field around HV Insulators with or without Pollution", *IEEE Transactions on Electrical Insulation*, Vol. 7, No. 2, pp. 169-176, 2000.
- [15] W. Que, S. A. Sebo, "Electric Field and Potential Distributions Along Dry and Clean Non-ceramic Insulators", *IEEE Electrical Insulation Conference Proceedings*, pp. 437-440, 2001.
- [16] M. Farsadi, Ö. Kalenderli, "A New Method for Calculating of Electric Fields Around Any Arbitrary Shape Electrodes", *XIII<sup>th</sup> International Symposium on High Voltage Engineering*, pp. 1-4, Netherlands, 2003.
- [17] M. Farsadi, Ö. Kalenderli, "A New Method for Calculating of Electric Fields Around Transmission Lines", *2<sup>nd</sup> International Conference on Technical and Physical Problems in Power Engineering*, 6-8 September 2004, Tebriz, Iran.