

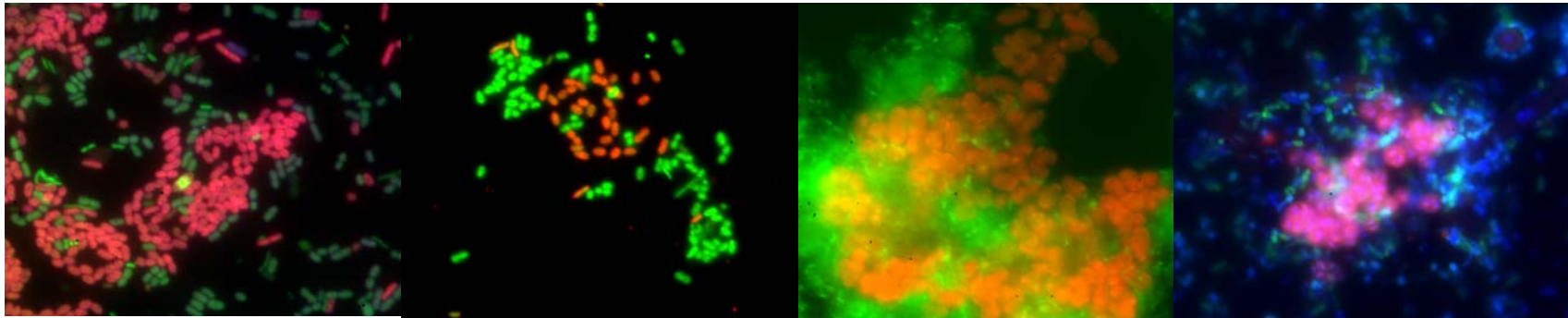
SIGNIFICANT POPULATIONS IN THREE LAB-SCALE AEROBIC GRANULAR BIOMASS SBRs**

Alfa-Proteobacteria

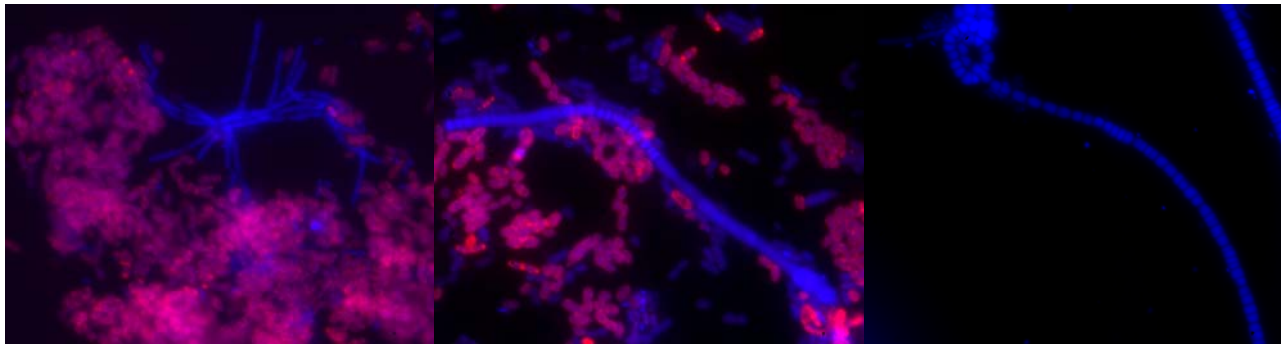
Beta-Proteobacteria

PAOs

GAOs



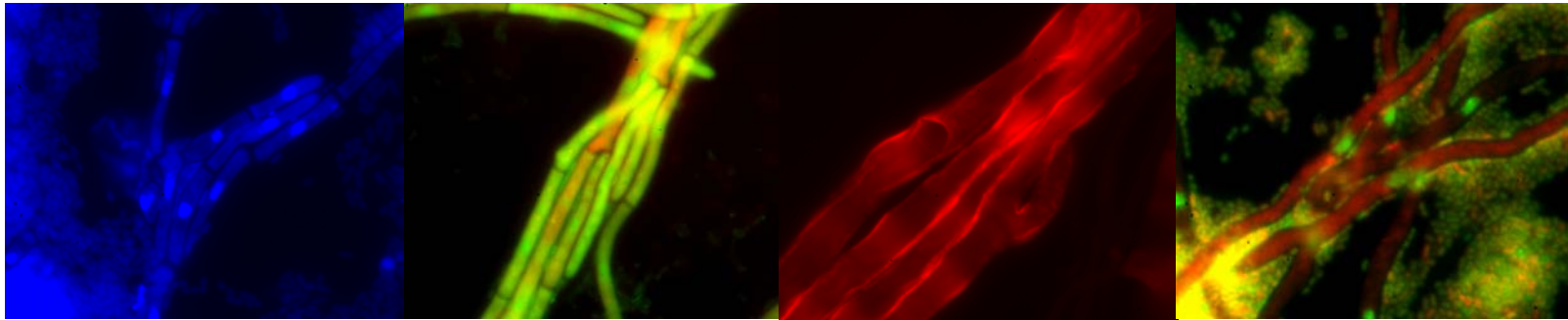
FILAMENTS



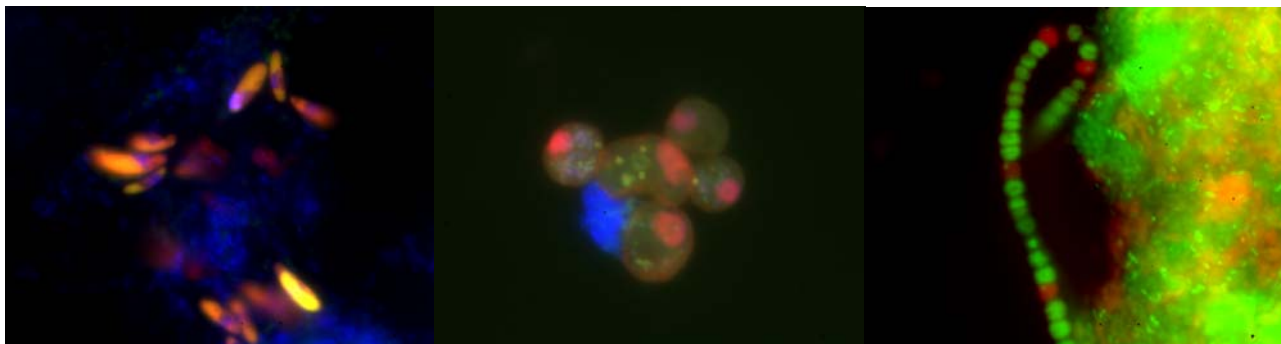
*Unpublished data by E. DULEKGURGEN (2003): Selected micrographs, captured by the CCD-cam fit to the CLSM.

SIGNIFICANT POPULATIONS IN THREE LAB-SCALE AEROBIC GRANULAR BIOMASS SBRs**

FUNGI



YEAST CELLS and filament



*Unpublished data by E. DULEKGURGEN (2003): Selected micrographs, captured by the CCD-cam fit to the CLSM.