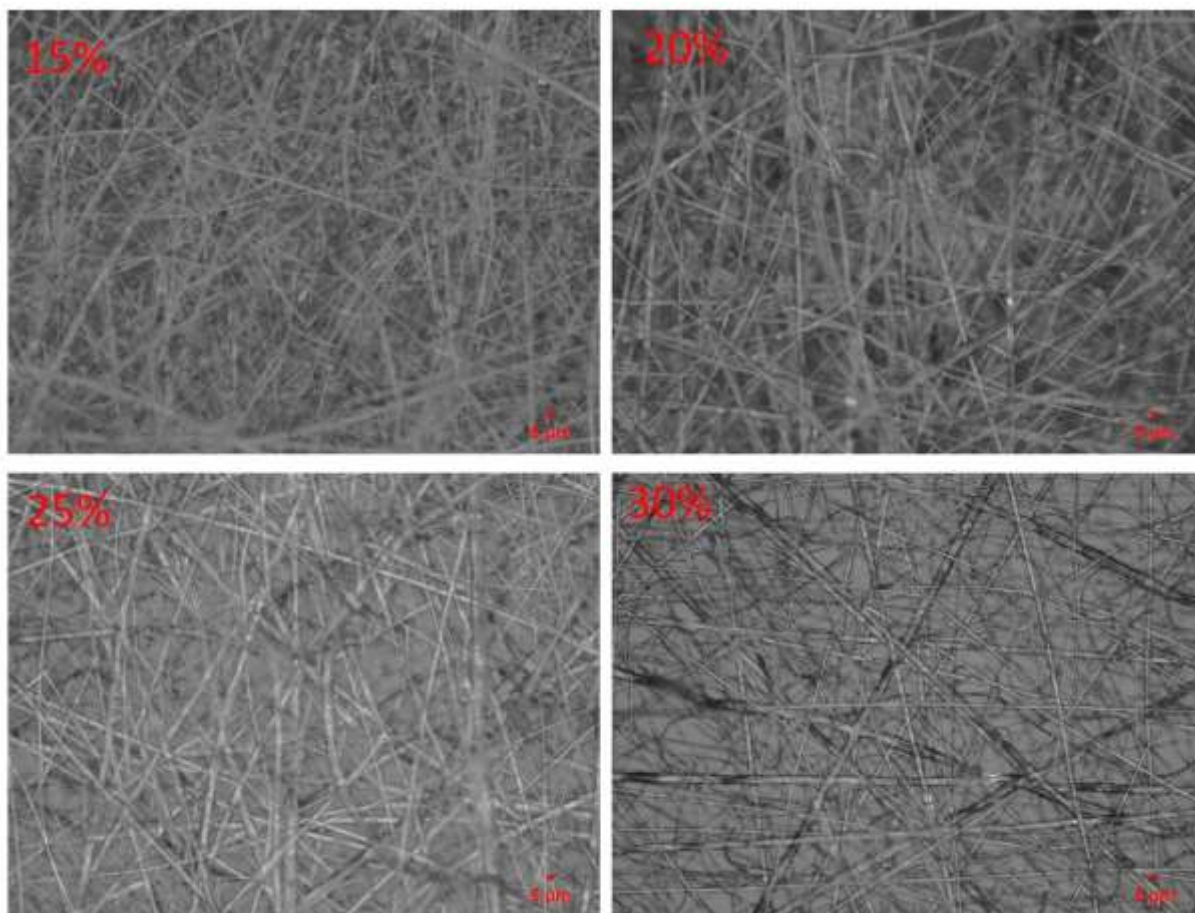


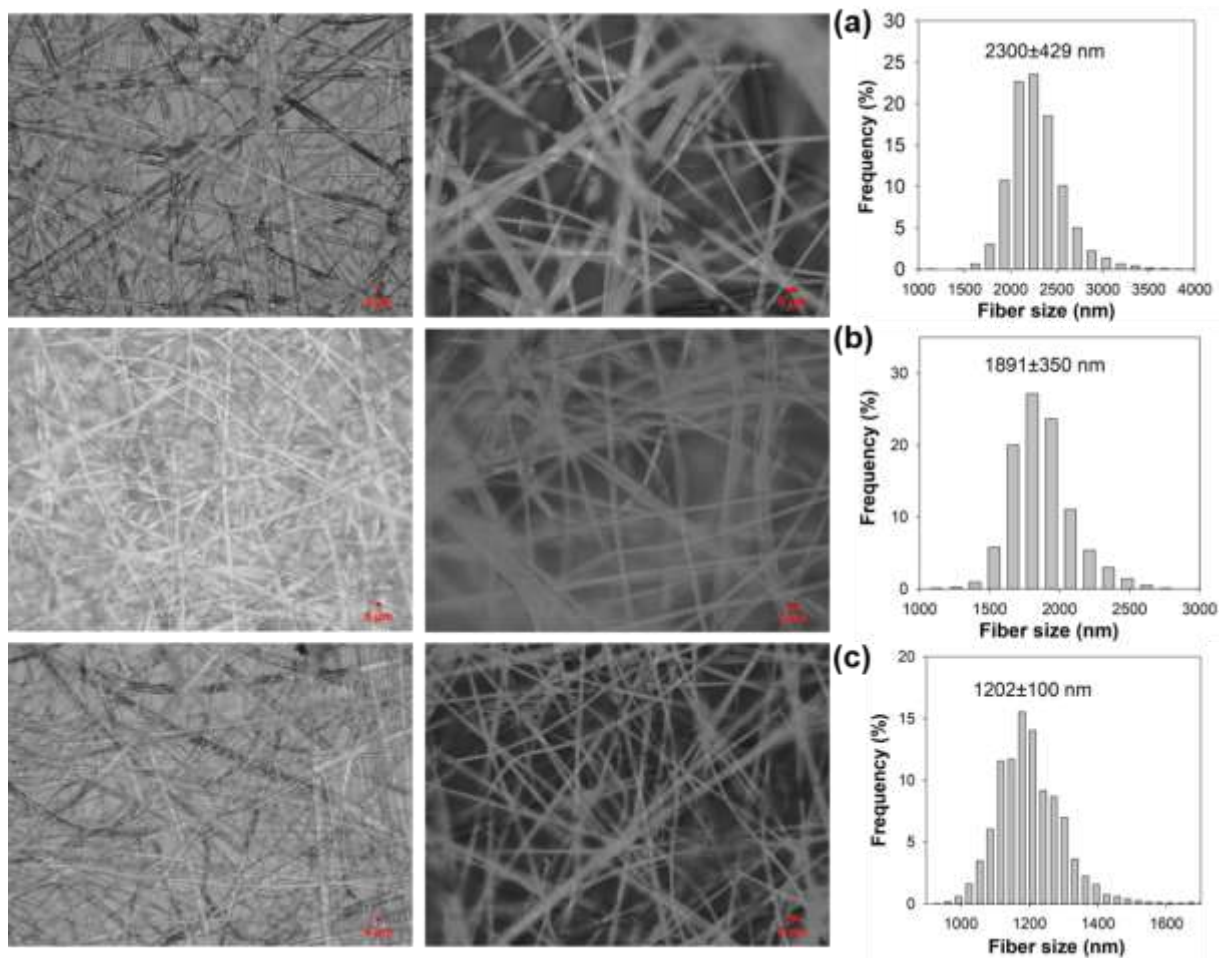
**Supporting Information for:**

**Melt-processable and electrospinnable shape memory hydrogels**

*Turdimuhammad Abdullah, Cagatay Altinkok, and Oguz Okay*



**Figure S1.** Optical images of electrospun P(AAc-C18A) hydrogels containing 35 mol% C18A at various polymer concentrations. Chloroform/ethanol ratio = 3:1. Voltage = 17 kV. Feed rate = 1 ml·h<sup>-1</sup>. Travel distance =13 cm.



**Figure S2.** Optical images and fiber size distribution of electrospun P(AAc-C18A) hydrogels containing 35 mol% of C18A dissolved in chloroform/ethanol at volume ratios of 2/1 (a), 1/1 (b), and 1/2 (c). Polymer concentration = 20 w/v %. Voltage = 17 kV. Feed rate = 1 ml·h<sup>-1</sup>. Travel distance